

Chantal Thomass

Est. Paris



THE BRAND UNIVERSE	3
CHANTAL THOMASS TODAY	4
<i>The brand</i>	
<i>The lingerie</i>	
<i>Collaborations</i>	
<i>Byproducts</i>	
<i>POS</i>	
<i>Communication</i>	
THE FRAGRANCES	11
<i>Osez-moi! EDP</i>	
<i>Chantal Thomass Original collection EDP</i>	
2020 NEW LAUNCH – 211 EDP	16
POSM	19
MARKETING CALENDAR	20
GRAPHIC CHART	21

CHANTAL THOMASS FRAGRANCE



End of the 60's

Chantal Thomass made her entry into the fashion world by creating her off-the-rack brand, Ter and Bantine and launched her trademark style: feminine, daring, irreverent, and unexpected.

1975

Desiring something more feminine and sophisticated than the current styles, Chantal Thomass created a new lingerie brand; one to which she gave her name, and which would make her famous.

1979

Launch of the first collection of Chantal Thomass tights developed in collaboration with Wolford.

2002

Launch of the iconic Chantal Thomass fragrance.

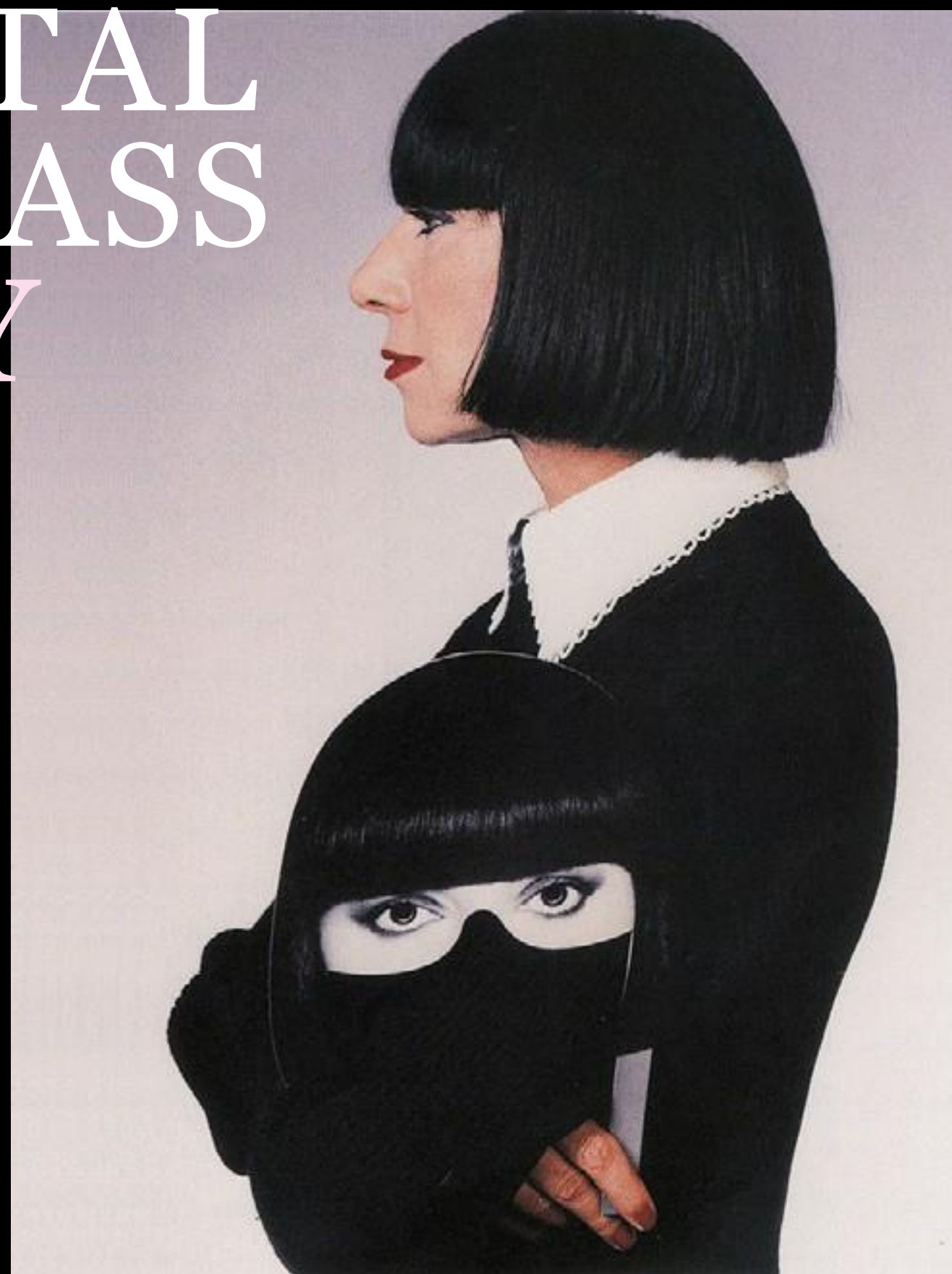
2004

Opening of the boutique at the 211 rue Saint Honoré in Paris.

CHANTAL THOMASS TODAY

The Brand***Today***

Chantal Thomass collaborates with many famous brands to develop exclusive capsule collections.



THE LINGERIE



Seduction
Glamour
Luxury



Femininity
Sensuality
Impertinence



Crazy Horse

to celebrate 65 years of folly and glamour, Crazy Horse Paris invited Chantal Thomass to be the Art Director of the show.

Coca-Cola

on the legendary silver bottom of the Coca-Cola Light brand, whispers of lace and delicate satin ribbon meet for 2014 Valentine's day.

Rometti

The encounter of femininity and Italian ceramics.

Roland Garros

Roland-Garros invited Chantal Thomass to design some pieces in her collection for the 2014 tournament.

Interflora

This Valentine's Day, Chantal Thomass has chosen to collaborate with Interflora with a sensual floral and elegant collection that is full of surprises!

Treca

Collaboration with Tréca, the high standard bedding brand, so as to create rooms full of seduction and lace.

Damart

After a first collaboration last year, Damart collaborates with Chantal Thomass for a new ready-to-wear collection for year's end celebrations.

CHANTAL THOMASS

TODAY

Collaborations



Suitcase

Chantal Thomass, globetrotter, designed exclusive pieces for BackDesign: 2 references of suitcase for glamorous holidays!

Glasses

Every season, Chantal Thomass designs a collection of eyeglasses with her partner, Grosfilley. Each model shows some Chantal Thomass' brand codes: lace, bow, pin-up inspired panther print, or lacing, and colors.

Umbrellas

Since 2000, working with Guy de Jean, Chantal Thomass has put all her creative force and her audacity into developing original, eye-catching, glamorous umbrellas and parasols.

CHANTAL THOMASS TODAY *Byproducts*



The Parisian Boutique

An exclusive boutique in Paris to discover the brand universe in a graphic and modern flagship, in a prestigious neighborhood.

211 Rue Saint-Honoré, 75001 PARIS

CHANTAL THOMASS TODAY *POS*



*Chantal Thomass’
lingerie worldwide
distribution*

FRANCE
(Printemps, independant
boutiques...)

RUSSIA
(Tsum, Moscow)

POLAND

LITHUANIA

LATVIA

CZECH REPUBLIC

SWEDEN

UNITED KINGDOM

BELGIUM

NETHERLANDS

AUSTRIA

SWITZERLAND

SPAIN
(El Corte Ingles)

ITALY

DUBAI
(Galeries Lafayette)

LEBANON

USA
(Neiman Marcus)

TAIWAN

CHANTAL
THOMASS
TODAY
POS

*Chantal Thomass’
fragrances worldwide
distribution*

USA

MIDDLE EAST

NETHERLANDS

POLAND

BELGIUM

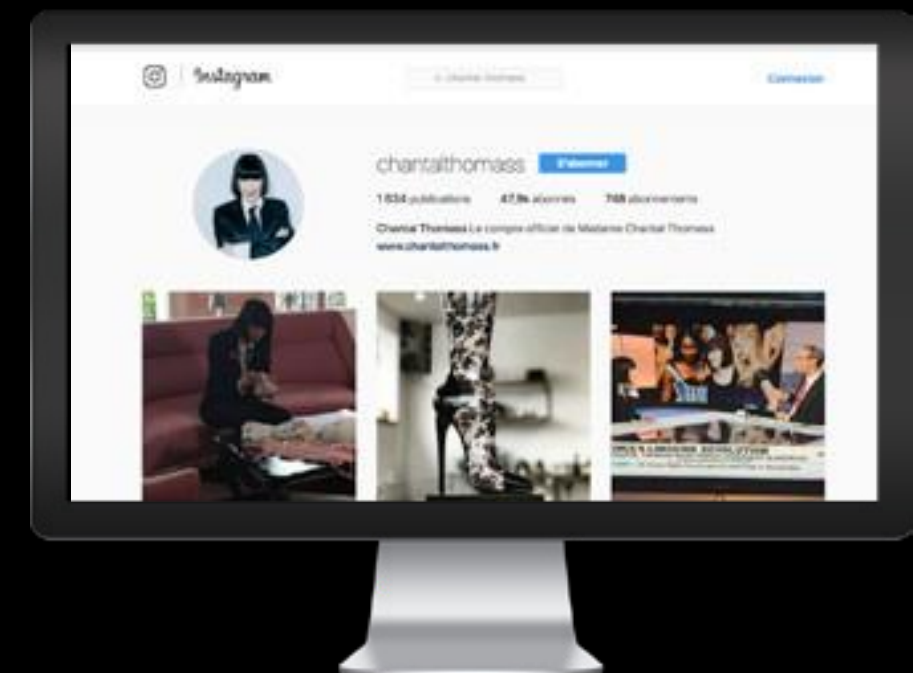
FRANCE

MAGHREB



CHANTAL THOMASS TODAY

Communication



THE FRAGRANCES



Osez-moi !

EDP 100ml

65 €

A neo-retro and captivating fragrance, expressing the univers of the brand: chic and boudoir. Provocative, romantic and poetic, this fragrance unveils sensuality treasures.

The fragrance is at the image of the lingerie: precious details, nobles raw materials and a touch of unexpected.

OLEFATORY FAMILY

oriental vanilla

TOP

Rhubarb

Frangipani
flowers

HEART

Rose

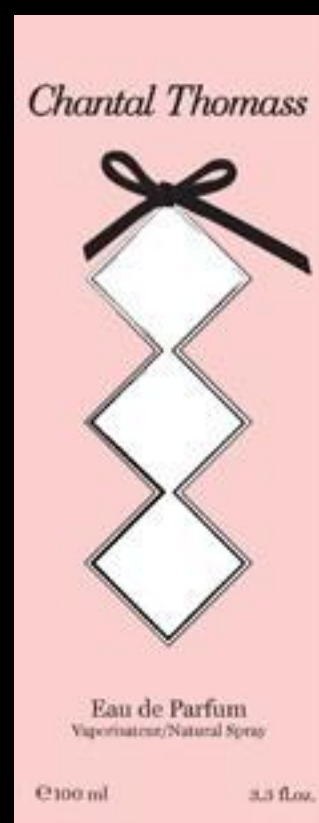
Violet leaves

BASE

Muscs

Patchouli

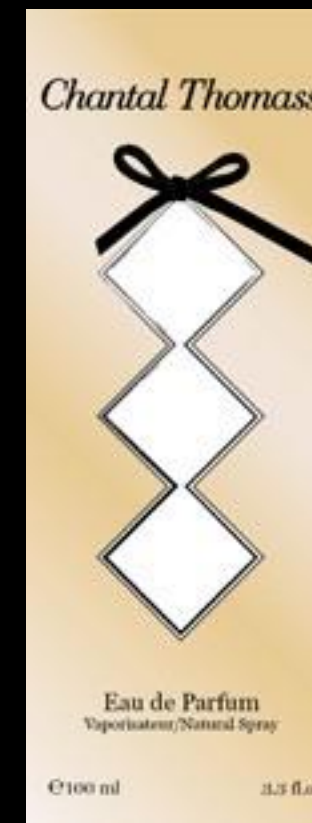
THE FRAGRANCES Original collection



Chantal Thomass Pink EDP



Chantal Thomass EDP



Chantal Thomass Gold EDP

THE FRAGRANCES

The original fragrance **Chantal Thomass EDP**

EDP 100ml

65 €

Chantal Thomass reinvent seduction through a fresh, charming and feminine fragrance. Sweet and explosive, gourmet and exciting, this fragrance let an irresistible scent on the skin, as fine lingerie.

OLFATORY FAMILY
fruity floral

TOP
Raspberry leaves
Apple

HEART
Violet
Orange blossom

BASE
Amber
Sandalwood

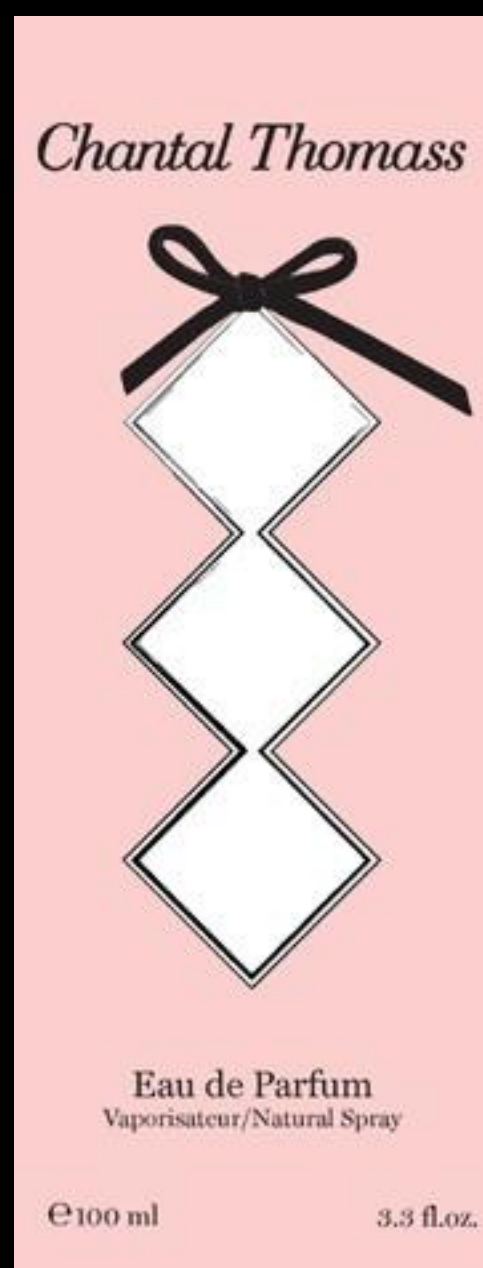
Chantal Thomass
PARIS



Chantal Thomass
Est. Paris

REF : CT3011

THE FRAGRANCES



Chantal Thomass *Pink EDP*

EDP 100ml

65 €

Discover the new fragrance developped in accordance with the brand's codes: Pink is an iconic color of the brand, reminding of the numerous creations of the designer: ribbons, bras, panties etc.

This sweet, gourmand and seductive fragrance will reveal your mischievous side. A real candy to wear day and night!

OLFATORY FAMILY
fruity floral

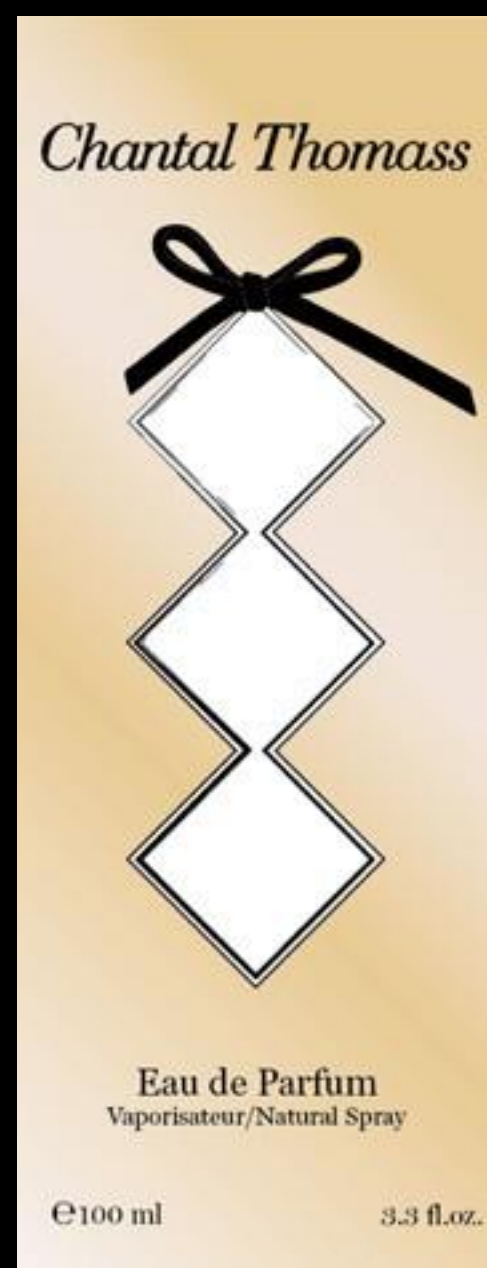
TOP
Blackcurrant
Raspberry

HEART
Jasmine Sambac
Red berries

BASE
Tonka Beans
Vanilla



THE FRAGRANCES



Chantal Thomass Gold EDP

EDP 100ml

65 €

This new fragrance is completing the EDP range.

A mysterious and captivating fragrance to express femininity with the oriental notes.

Be seductive and sparkling wearing Chantal Thomass Gold version !

OLFATORY FAMILY
oriental gourmand

TOP
Pear Sorbet
Pink Baies

HEART
Orange Blossom
Jasmine

BASE
Vanilla
Patchouli



Chantal Thomass
Est. Paris

REF : CT3013



2020 LANCEMENT

Chantal Thomass
Est. Paris

211

RUE SAINT-HONORÉ

Chantal Thomass pays tribute to her flagship store located in Paris, 211 rue Saint Honoré with the launch of her new fragrance.

A true ode to femininity this fragrance depicts the portrait of a feminine and seductive woman, in love with freedom. The smooth scents of rose and lychee contrast with the woody notes.

From this fusion born 211 a fragrance delightfully captivating.





FLORIENTAL FRUITY

EDP 100 ML – 75 €



TOP :
Litchi, Pear , Blackcurrant

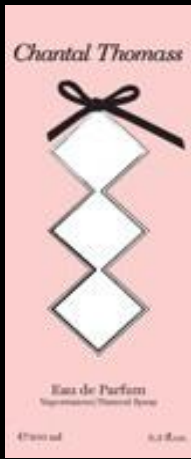
HEART :
Rose, Jasmine, Heliotrope

BASE :
Cashmere Wood, Benzoin, Sandalwood

AVAILABLE ITEMS



Osez Moi!
EDP



Chantal Thomass
Pink EDP



Chantal Thomass
EDP



Chantal Thomass
Gold EDP

SRP: 65€



211 EDP
SRP: 75€

Chantal Thomass
Est. Paris

POS MATERIALS

Vials

Osez-Moi! 2ml vials

REF : CT3014V



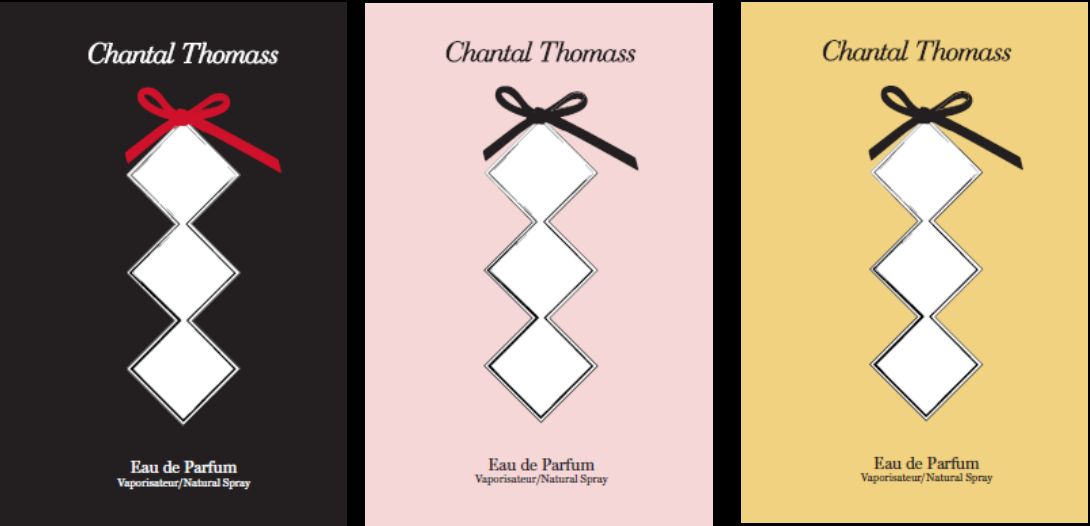
Vials

Chantal Thomass Original Collection 2 ml vials

Original - REF : CT3011V

Pink - REF : CT3012V

Gold - REF : CT3013V







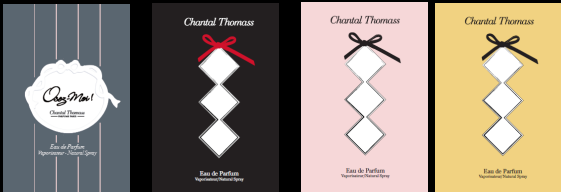


Blotters

Chantal Thomass blotters

REF : CT302BLO



				2020					
				Q1					
				NEW					
<div><div><div>SALEABLE</div><div>SRP: 65,00 €</div></div></div>									
<div><div></div><div>Osez Moi! EDP</div></div>		<div><div></div><div>Chantal Thomass EDP</div></div>		<div><div></div><div>Chantal Thomass Gold EDP</div></div>		<div><div></div><div>Chantal Thomass Pink EDP</div></div>		<div><div></div><div>211 EDP</div></div>	
<div><div></div><div>Chantal Thomass - Blotters</div></div>				<div><div></div><div>Chantal Thomass - Vials</div></div>					

Logo

Chantal Thomass
Est. Paris

Miller Text
Regular

A B C D E F G H I J K L M N O P Q
R S T U V W X Y Z a b c d e f g h i j k l
m n o p q r s t u v w x y z ‘ ’ “ ” (%) [
] { @ } / & \ < - + ÷ × = > ® © \$ £ ¥
¢ : ; , . *

Colors

Pantone
U 698

Pantone
U 7403

Pantone
C 186

Pantone
U 431

C o
M o
J o
N 100

Campaigns



Chantal Thomass

Est. Paris



CREATION BEAUTE INTERNATIONAL

<https://creationbeauteinternational.fr/>