

THERMA



CATALOG FITTINGS





serie 8000

HEATING PIPES

a. PEX-AL-PEX Systems
b. PEXb-STABI Systems
c. PEXa Systems
d. PEXb Systems
e. PEXb-EVOH Systems

f. PEXc Systems
g. PEXc-EVOH Systems
h. PERT Systems
i. PERT-EVOH Systems

Pag.4



serie 8100

BRASS BALL VALVES

Pag.10



serie 8200

BIBCOCKS

Pag.18



serie 8300

GATE VALVES

Pag.21



serie 8400

ANGLE VALVES

Pag.24



serie 8500

PEX-AL-PEX FITTINGS PEX FITTINGS

Pag.27



serie 8900

BRASS SCREW FITTINGS

Pag.34



serie **8600** PRESSURE FITTINGS

Pag.40



serie **8700** SLIDING SLEEVE FITTINGS

Pag.45



serie **8800** COPPER PIPE FITTINGS

Pag.50



serie **9000** BRASS SCREW FITTINGS NICKEL PLATED

Pag.50



serie **9100** HAVC-RADIATOR VALVES

Pag.57



serie **9200** HAVC-MONIFOLD

Pag.67



serie **9300** GAS SYSTEMS

Pag.80



Therma Pex pipes

Therma Pex pipe is made of excellent and high quality raw material which achieved the KTW certificate. It can be used in hot and cold drinking water, acid and alkali, with an excellent resistance to the reducing agent, oxidant, toluene, xylene and gasoline.

German technology , small ergonomic ideas hidden in the design and 360 rotating structure.

Palconn high-tech flex hoses have earned a reputation for reliability and quality of product.

Advantages

Instead of EPDM material .

No harmful effect on human life

Environment friendly

Usages

Therma Pex pipe is a new high-tech products widely used in drinking water and sanitary accessory.

Working pressure is 10 bar in sanitary applications.

Hardness can be shore A 65-95

Pex pipe size range

Size(MM)
15x2.0
16x2.0
16x2.2
18x2.0
18x2.2
20x2.0
20x2.8
22x2.5
25x2.5
26x3.0
28x3.0
32x3.0





- | | |
|-----------------------|----------------------|
| a. PEX-AL-PEX Systems | f. PEXc Systems |
| b. PEXb-STABI Systems | g. PEXc-EVOH Systems |
| c. PEXa Systems | h. PERT Systems |
| d. PEXb Systems | i. PERT-EVOH Systems |
| e. PEXb-EVOH Systems | |

Tubo Multilayer insulated pipe PEX-AL-PEX ACQUA *Multilayer insulated pipe PEX-AL-PEX IN rolls*

Prodotto certificato
Certified product



a. PEX-AL-PEX Systems



serie **8000**

Pipes size range:



80001

Overlap welding

Size(MM)	Packing(M/ROLLS)
1216	100m/200m
1418	100m/200m
1620	100m/200m
2025	100m/50m
2026	100m/50m
2632	100m/50m



80002

Butt welding-Laser

Size(MM)	Packing(M/ROLLS)
1216	100m/200m
1418	100m/200m
1620	100m/200m
2025	100m/50m
2026	100m/50m
2632	100m/50m

For OEM: 0912.1014.1115. 1722. 2228

	BLACK	Hot&cold potable water
	GREEN	Rainwater
	GREY	Recycled water(non- potable)
	PINK	Hydronic heating
	RED	Hot water
	BLACK	In/under slab hot&cold water

For OEM color : 50000m

ROLLS SIZE



Size	m/rools	Packing rools			CBM
		A.	B.	C.	
1216	100	47	17	18	0.036
1418	100	60	23	18	0.05
1620	100	56	23	18	0.065
2026	100	74	31	21	0.144
2632	100	94	48	17	0.18

b. PEXb-STABI Systems

serie **8000**

Pipes size range:



80003

PEXb-AL-PE Stabi:

Size(MM)	Packing(M/ROLLS)
16.2x2.6	100m/200m/500m
20x2.9	100m/200m
25x3.7	100m/50m
32x4.7	100m/50m
40x6.0	100m/50m

STABI pipes:

As a leading pipeline manufacturer in China , ifan started producing peroxides crosslinked polyethylene stabi pipelines . With a history of more than 20 years, ifan has extensive experience in the production and application of peroxides crosslinked polyethylene (stabi) pipelines. The combination of rihao tightening ring connection technology provides you with a reliable leak-free connection and ensures the system with excellent toughness and strength for over 50 years of service life.

stabi crosslinked polyethylene has the following excellent performance advantages over other floor heating pipe materials:

Excellent creep rupture resistance and high temperature stability
The short-term maximum temperature can reach 100°C

- Significant memory (self-healing ability)
- Rapid expansion and slow reduction
- Good impact strength, resistance to low temperature impact strength can be as low as to 50 ° C
- Excellent chemical resistance and wear resistance
- No damage due to minor scratches
- stabi pink purple pipe, stabi flex silver gray pipe, more suitable for dark heat sink.

PEXb-AL-PE Stabi:

Size(MM)	Outside diameter	Wall thickness	inside material	middle material	outside material
16	16.2	2.6	PEXb(PEXa)	AL	PE
20	20	2.9	PEXb(PEXa)	AL	PE
25	25	3.7	PEXb(PEXa)	AL	PE
32	32	4.7	PEXb(PEXa)	AL	PE
40	40	6.0	PEXb(PEXa)	AL	PE

Pipes size range:



80003

PEXa pipes

Size(MM)	PACKING
16x2.0	100m/200m/500m
16x2.2	100m/200m/500m
20x2.0	100m/200m/300m
20x2.8	100m/200m
25x3.5	100m/50m
32x4.4	100/50m



80004

PEXa-EVOH

Size(MM)	PACKING
16x2.0	100m/200m/500m
16x2.2	100m/200m/500m
20x2.0	100m/200m/300m
20x2.8	100m/200m
25x3.5	100m/50m
32x4.4	100/50m

Pipes size range:



80005

PEXb

Size(MM)	PACKING
16x2.0	100m/200m/500m
16x2.2	100m/200m/500m
20x2.0	100m/200m/300m
20x2.8	100m/200m
25x3.5	100m/50m
32x4.4	100/50m



80006

PEXb-EVOH

Size(MM)	PACKING
16x2.0	100m/200m/500m
16x2.2	100m/200m/500m
20x2.0	100m/200m/300m
20x2.8	100m/200m
25x3.5	100m/50m
32x4.4	100/50m



Pipes size range:



80007

PEXc

Size(MM)	PACKING (M/ROLLS)
16x2.0	100m/200m/500m
16x2.2	100m/200m/500m
20x2.0	100m/200m/100m
20x2.8	100m/200m
25x3.5	100m/50m
32x4.4	100m/50m



80008

PEXc-EVOH

Size(MM)	PACKING (M/ROLLS)
16x2.0	100m/200m/500m
16x2.2	100m/200m/500m
20x2.0	100m/200m/300m
20x2.8	100m/200m
25x3.5	100m/50m
32x4.4	100m/50m

Pipes size range:



80009

PERT

Size(MM)	PACKING (M/ROLLS)
16x2.0	100m/200m/500m
16x2.2	100m/200m/500m
20x2.0	100m/200m/300m
20x2.8	100m/200m
25x3.5	100m/50m
32x4.4	100m/50m



80010

PERT-EVOH

Size(MM)	PACKING (M/ROLLS)
16x2.0	100m/200m/500m
16x2.2	100m/200m/500m
20x2.0	100m/200m/300m
20x2.8	100m/200m
25x3.5	100m/50m
32x4.4	100m/50m





a. BRASS BALL VALVES

b. BIBCOCKS

c. GATE VALVES

d. ANGLE VALVES



Valvole a sfera passaggio totale ISO 228/1 *Brass ball valve for plumbing systems*

Prodotto certificato
Certified product



a. BRASS BALL VALVES



serie **81052**

81052-1 | Ball valve, full flow, female/female, flat lever handle



Features												
CE ACS EN												
Working pressure 25 bar (362.5 psi)												
Working temperature from -10°C to +120°C (from 14 °F to 248 °F)												
Thread ISO228 (equivalent to DIN 259 and BS2779)												
Opening/closing test 10000 times												
Size												
1/4"	3/8"	1/2"	3/4"	1"	1-1/4"	1-1/2"	2"	2-1/2"	3"	4"		

81052-2 | Ball valve, full flow, female/female, Butterfly handle



Features												
CE ACS EN												
Working pressure 25 bar (362.5 psi)												
Working temperature from -10°C to +120°C (from 14 °F to 248 °F)												
Thread ISO228 (equivalent to DIN 259 and BS2779)												
Opening/closing test 10000 times												
Size												
1/2Fx1/2F	3/4Fx3/4F	1"FF										

81052-3 | Ball valve, full flow, female/male, flat lever handle



Features												
CE ACS EN												
Working pressure 25 bar (362.5 psi)												
Working temperature from -10°C to +120°C (from 14 °F to 248 °F)												
Thread ISO228 (equivalent to DIN 259 and BS2779)												
Opening/closing test 10000 times												
Size												
1/2Fx1/2M	3/4Fx3/4M	1"FM	1-1/4"FM	1-1/2"FM	2"FM							

81052-4 | Ball valve, full flow, female/male, Butterfly handle



Features												
CE ACS EN												
Working pressure 25 bar (362.5 psi)												
Working temperature from -10°C to +120°C (from 14 °F to 248 °F)												
Thread ISO228 (equivalent to DIN 259 and BS2779)												
Opening/closing test 10000 times												
Size												
1/2Fx1/2M	3/4Fx3/4M	1"FM										

81052-5 | Ball valve, full flow, male/male, flat lever handle



Features												
CE ACS EN												
Working pressure 25 bar (362.5 psi)												
Working temperature from -10°C to +120°C (from 14 °F to 248 °F)												
Thread ISO228 (equivalent to DIN 259 and BS2779)												
Opening/closing test 10000 times												
Size												
1/2Mx1/2M	3/4Mx3/4M	1"MM	1-1/4"MM	1-1/2"MM	2"MM							



81052-6 | Ball valve, full flow, male/male, Butterfly handle



Features												
CE ACS EN												
Working pressure 25 bar (362.5 psi)												
Working temperature from -10°C to +120°C (from 14 °F to 248 °F)												
Thread ISO228 (equivalent to DIN 259 and BS2779)												
Opening/closing test 10000 times												
Size												
1/2Mx1/2M	3/4Mx3/4M	1"MM										

a. BRASS BALL VALVES



serie **81063**

81063-1 | Ball valve, full flow, female/female, flat lever handle



Features		CE ACS ENI	
Working pressure	25 bar (362.5 psi)		
Working temperature	from -10°C to +120°C (from 14 °F to 248 °F)		
Thread	ISO228 (equivalent to DIN 259 and BS2779)		
Opening/closing test	10000 times		
Size	1/2FF 3/4FF 1"FF 1-1/4FF 1-1/2FF 2"FF 2-1/2FF 3"FF 4"FF		

81063-2 | Ball valve, full flow, female/female, Butterfly handle



Features		CE ACS ENI	
Working pressure	25 bar (362.5 psi)		
Working temperature	from -10°C to +120°C (from 14 °F to 248 °F)		
Thread	ISO228 (equivalent to DIN 259 and BS2779)		
Opening/closing test	10000 times		
Size	1/2FX1/2F 3/4FX3/4F 1"FF 1-1/4FF		

81063-3 | Ball valve, full flow, female/male, flat lever handle



Features		CE ACS ENI	
Working pressure	25 bar (362.5 psi)		
Working temperature	from -10°C to +120°C (from 14 °F to 248 °F)		
Thread	ISO228 (equivalent to DIN 259 and BS2779)		
Opening/closing test	10000 times		
Size	1/2Fx1/2M 3/4Fx3/4M 1"FM 1-1/4"FM 1-1/2"FM 2"FM		

81063-4 | Ball valve, full flow, female/male, Butterfly handle



Features		CE ACS ENI	
Working pressure	25 bar (362.5 psi)		
Working temperature	from -10°C to +120°C (from 14 °F to 248 °F)		
Thread	ISO228 (equivalent to DIN 259 and BS2779)		
Opening/closing test	10000 times		
Size	1/2Fx1/2M 3/4Fx3/4M 1"FM 1-1/4FM		

81063-4 | Ball valve, full flow, male/male, flat lever handle



Features		CE ACS ENI	
Working pressure	25 bar (362.5 psi)		
Working temperature	from -10°C to +120°C (from 14 °F to 248 °F)		
Thread	ISO228 (equivalent to DIN 259 and BS2779)		
Opening/closing test	10000 times		
Size	1/2MM 3/4MM 1"MM 1-1/4MM 1-1/2MM 2"MM 2-1/2MM 3"MM 4"MM		

81063-5 | Ball valve, full flow, male/male, Butterfly handle



Features		CE ACS ENI	
Working pressure	25 bar (362.5 psi)		
Working temperature	from -10°C to +120°C (from 14 °F to 248 °F)		
Thread	ISO228 (equivalent to DIN 259 and BS2779)		
Opening/closing test	10000 times		
Size	1/2Mx1/2M 3/4Mx3/4M 1"MM 1-1/4MM		

a. BRASS BALL VALVES



serie **81065**

81065-1 | Ball valve, full flow, female/female, flat lever handle



Features						
CE ACS ERI						
Working pressure 25 bar (362.5 psi)						
Working temperature from -10°C to +120°C (from 14 °F to 248 °F)						
Thread ISO228 (equivalent to DIN 259 and BS2779)						
Opening/closing test 10000 times						
Size						
1/2FF	3/4FF	1FF	1-1/4"FF	1-1/2"FF	2FF	

81065-2 | Ball valve, full flow, female/female, Butterfly handle



Features			
CE ACS ERI			
Working pressure 25 bar (362.5 psi)			
Working temperature from -10°C to +120°C (from 14 °F to 248 °F)			
Thread ISO228 (equivalent to DIN 259 and BS2779)			
Opening/closing test 10000 times			
Size			
1/2FF	3/4FF	1FF	

81065-3 | Ball valve, full flow, female/male, flat lever handle



Features						
CE ACS ERI						
Working pressure 25 bar (362.5 psi)						
Working temperature from -10°C to +120°C (from 14 °F to 248 °F)						
Thread ISO228 (equivalent to DIN 259 and BS2779)						
Opening/closing test 10000 times						
Size						
1/2FM	3/4FM	1FM	1-1/4"FM	1-1/2"FM	2FM	

81065-4 | Ball valve, full flow, female/male, Butterfly handle



Features			
CE ACS ERI			
Working pressure 25 bar (362.5 psi)			
Working temperature from -10°C to +120°C (from 14 °F to 248 °F)			
Thread ISO228 (equivalent to DIN 259 and BS2779)			
Opening/closing test 10000 times			
Size			
1/2FM	3/4FM	1FM	

81065-5 | Ball valve, full flow, female/male, flat lever handle



Features						
CE ACS ERI						
Working pressure 25 bar (362.5 psi)						
Working temperature from -10°C to +120°C (from 14 °F to 248 °F)						
Thread ISO228 (equivalent to DIN 259 and BS2779)						
Opening/closing test 10000 times						
Size						
1/2FM	3/4FM	1FM	1-1/4"FM	1-1/2"FM	2FM	

81065-6 | Ball valve, full flow, female/male, Butterfly handle



Features			
CE ACS ERI			
Working pressure 25 bar (362.5 psi)			
Working temperature from -10°C to +120°C (from 14 °F to 248 °F)			
Thread ISO228 (equivalent to DIN 259 and BS2779)			
Opening/closing test 10000 times			
Size			
1/2FM	3/4FM	1FM	

a. BRASS BALL VALVES



serie **81068**

81068-1 | Ball valve, full flow, female/female, flat lever handle



Features						
CE ACS ENEC						
Working pressure 25 bar (362.5 psi)						
Working temperature from -10°C to +120°C (from 14 °F to 248 °F)						
Thread ISO228 (equivalent to DIN 259 and BS2779)						
Opening/closing test 10000 times						
Size	1/2"	3/4"	1"	1 1/4"	1 1/2"	2"

81068-2 | Ball valve, full flow, female/female, Butterfly handle



Features			
CE ACS ENEC			
Working pressure 25 bar (362.5 psi)			
Working temperature from -10°C to +120°C (from 14 °F to 248 °F)			
Thread ISO228 (equivalent to DIN 259 and BS2779)			
Opening/closing test 10000 times			
Size	1/2"	3/4"	1"

81068-3 | Ball valve, full flow, female/male, flat lever handle



Features						
CE ACS ENEC						
Working pressure 25 bar (362.5 psi)						
Working temperature from -10°C to +120°C (from 14 °F to 248 °F)						
Thread ISO228 (equivalent to DIN 259 and BS2779)						
Opening/closing test 10000 times						
Size	1/2"	3/4"	1"	1 1/4"	1 1/2"	2"

81068-4 | Ball valve, full flow, female/male, Butterfly handle



Features			
CE ACS ENEC			
Working pressure 25 bar (362.5 psi)			
Working temperature from -10°C to +120°C (from 14 °F to 248 °F)			
Thread ISO228 (equivalent to DIN 259 and BS2779)			
Opening/closing test 10000 times			
Size	1/2"	3/4"	1"

81068-5 | Ball valve, full flow, male/male, flat lever handle



Features						
CE ACS ENEC						
Working pressure 25 bar (362.5 psi)						
Working temperature from -10°C to +120°C (from 14 °F to 248 °F)						
Thread ISO228 (equivalent to DIN 259 and BS2779)						
Opening/closing test 10000 times						
Size	1/2"	3/4"	1"	1 1/4"	1 1/2"	2"

81068-6 | Ball valve, full flow, male/male, Butterfly handle



Features			
CE ACS ENEC			
Working pressure 25 bar (362.5 psi)			
Working temperature from -10°C to +120°C (from 14 °F to 248 °F)			
Thread ISO228 (equivalent to DIN 259 and BS2779)			
Opening/closing test 10000 times			
Size	1/2"	3/4"	1"

a. BRASS BALL VALVES



serie **81068**

81068-7 | Ball valve, full flow, female/male, Butterfly handle



Features				
CE ACS ENI				
Working pressure 25 bar (362.5 psi)				
Working temperature from -10°C to +120°C (from 14 °F to 248 °F)				
Thread ISO228 (equivalent to DIN 259 and BS2779)				
Opening/closing test 10000 times				
Size				
1/2"	3/4"	1"	1 1/4"	

81068-8 | Angle ball valve, full flow, female/male, Butterfly handle



Features				
CE ACS ENI				
Working pressure 25 bar (362.5 psi)				
Working temperature from -10°C to +120°C (from 14 °F to 248 °F)				
Thread ISO228 (equivalent to DIN 259 and BS2779)				
Opening/closing test 10000 times				
Size				
1/2"	3/4"	1"		

81068-9 | Ball valve, full flow, female/male, Butterfly handle



Features				
CE ACS ENI				
Working pressure 25 bar (362.5 psi)				
Working temperature from -10°C to +120°C (from 14 °F to 248 °F)				
Thread ISO228 (equivalent to DIN 259 and BS2779)				
Opening/closing test 10000 times				
Size				
1/2"	3/4"	1"	1 1/4"	

81068-10 | Angle ball valve, full flow, female/male, Butterfly handle



Features				
CE ACS ENI				
Working pressure 25 bar (362.5 psi)				
Working temperature from -10°C to +120°C (from 14 °F to 248 °F)				
Thread ISO228 (equivalent to DIN 259 and BS2779)				
Opening/closing test 10000 times				
Size				
1/2"	3/4"	1"		

81068-11 | Ball valve, full flow, female/female with Y strainer, flat lever handle



Features				
CE ACS ENI				
Working pressure 25 bar (362.5 psi)				
Working temperature from -10°C to +120°C (from 14 °F to 248 °F)				
Thread ISO228 (equivalent to DIN 259 and BS2779)				
Opening/closing test 10000 times				
Size				
1/2"	3/4"			

81068-12 | Ball valve, full flow, female/female with Y strainer, Butterfly handle



Features				
CE ACS ENI				
Working pressure 25 bar (362.5 psi)				
Working temperature from -10°C to +120°C (from 14 °F to 248 °F)				
Thread ISO228 (equivalent to DIN 259 and BS2779)				
Opening/closing test 10000 times				
Size				
1/2"	3/4"			

a. BRASS BALL VALVES



serie **81068**

81068-13 | Ball valve, full flow, female/female, with drain cock, flat lever handle



CE ACS EN

Features			
Working pressure 25 bar (362.5 psi)			
Working temperature from -10°C to +120°C (from 14 °F to 248 °F)			
Thread ISO228 (equivalent to DIN 259 and BS2779)			
Opening/closing test 10000 times			
Size			
1/2"	3/4"	1"	

81068-14 | Brass ball valve, flat handle, female/female



Features											CE ACS EN												
Working pressure 25 bar (362.5 psi)																							
Working temperature from -10°C to +120°C (from 14°F to 248°F)																							
Thread ISO228 (equivalent to DIN 259 and BS2779)																							
Opening/closing test 10000 times																							
Size		1/4"		3/8"		1/2"		3/4"		1"		1 1/4"		1 1/2"		2"		2 1/2"		3"		4"	

88061 | Ball valve, with PPR socket



Features											CE	ACS	EN
Working pressure 25 bar (362.5 psi)													
Working temperature from -10°C to +120°C (from 14°F to 248°F)													
Thread ISO228 (equivalent to DIN 259 and BS2779)													
Opening/closing test 10000 times													
Size	20	25	32	40	50	60	63	75	90	110			

88062 | Ball valve, with PPR socket



Features										CE ACS EN		
Working pressure 25 bar (362.5 psi)												
Working temperature from -10°C to +120°C (from 14°F to 248°F)												
Thread ISO228 (equivalent to DIN 259 and BS2779)												
Opening/closing test 10000 times												
Size		20	25	32	40	50	60	63	75	90	110	

88063 | Ball valve, with PPR socket



Features										CE	ACS	EN
Working pressure 25 bar (362.5 psi)												
Working temperature from -10°C to +120°C (from 14°F to 248°F)												
Thread ISO228 (equivalent to DIN 259 and BS2779)												
Opening/closing test 10000 times												

a. BRASS BALL VALVES



serie **81082**

81082-1

Mini ball valve,
male/female



Features

CE ACS EBC

Working pressure 25 bar (362.5 psi)
Working temperature from -10°C to +120°C (from 14°F to 248°F)
Thread ISO228 (equivalent to DIN 259 and BS2779)
Opening/closing test 10000 times

Size 1/2"

81082-2

Mini ball valve,
male/female



CE ACS EBC

Working pressure 25 bar (362.5 psi)
Working temperature from -10°C to +120°C (from 14°F to 248°F)
Thread ISO228 (equivalent to DIN 259 and BS2779)
Opening/closing test 10000 times

1/4" 3/8" 1/2"

81082-3

Mini ball valve,
female/female



Features

CE ACS EBC

Working pressure 25 bar (362.5 psi)
Working temperature from -10°C to +120°C (from 14°F to 248°F)
Thread ISO228 (equivalent to DIN 259 and BS2779)
Opening/closing test 10000 times

Size 1/4" 3/8" 1/2"

81082-4

Mini ball valve,
male/female



CE ACS EBC

Working pressure 25 bar (362.5 psi)
Working temperature from -10°C to +120°C (from 14°F to 248°F)
Thread ISO228 (equivalent to DIN 259 and BS2779)
Opening/closing test 10000 times

Size 1/4" 3/8" 1/2"

81082-5

3-way ball valve



Features

CE ACS EBC

Working pressure 25 bar (362.5 psi)
Working temperature from -10°C to +120°C (from 14°F to 248°F)
Thread ISO228 (equivalent to DIN 259 and BS2779)
Opening/closing test 10000 times

Size F1/2"x M3/4"xM1/2"

b. BIBCOCKS



serie **8200**

S04-1

Ball hose bibcocks,
flat lever handle



Features				CE ACS ENI
Working pressure 16 bar (232 psi)				
Working temperature from -10°C to +100°C (from 14 °F to 212 °F)				
Thread ISO228 (equivalent to DIN 259 and BS2779)				
Opening/closing test 10000 times				
<hr/>				
Size 1/2" 3/4" 1"				

S04-2

Ball hose bibcocks,
Butterfly handle



Features				CE ACS ENI
Working pressure 16 bar (232 psi)				
Working temperature from -10°C to +100°C (from 14 °F to 212 °F)				
Thread ISO228 (equivalent to DIN 259 and BS2779)				
Opening/closing test 10000 times				
<hr/>				
Size 1/2" 3/4" 1"				

S04-3

Ball hose bibcock, for washing machine,
flat lever handle



Features				CE ACS ENI
Working pressure 16 bar (232 psi)				
Working temperature from -10°C to +100°C (from 14 °F to 212 °F)				
Thread ISO228 (equivalent to DIN 259 and BS2779)				
Opening/closing test 10000 times				
<hr/>				
Size 1/2" 3/4" 1"				

S04-4

Ball hose bibcock,
lockable handle



Features				CE ACS ENI
Working pressure 16 bar (232 psi)				
Working temperature from -10°C to +100°C (from 14 °F to 212 °F)				
Thread ISO228 (equivalent to DIN 259 and BS2779)				
Opening/closing test 10000 times				
<hr/>				
Size 1/2" 3/4" 1"				

S03-1

Ball hose bibcocks,
flat lever handle



Features				CE ACS ENI
Working pressure 16 bar (232 psi)				
Working temperature from -10°C to +100°C (from 14 °F to 212 °F)				
Thread ISO228 (equivalent to DIN 259 and BS2779)				
Opening/closing test 10000 times				
<hr/>				
Size 1/2" 3/4" 1"				

S03-2

Ball hose bibcocks,
Butterfly handle



Features				CE ACS ENI
Working pressure 16 bar (232 psi)				
Working temperature from -10°C to +100°C (from 14 °F to 212 °F)				
Thread ISO228 (equivalent to DIN 259 and BS2779)				
Opening/closing test 10000 times				
<hr/>				
Size 1/2" 3/4" 1"				

b. BIBCOCKS



serie **8200**

S01-1 | Ball bibcock, flat lever handle



Features		CE ACS ENEC
Working pressure	16 bar (232 psi)	
Working temperature	from -10°C to +100°C (from 14 °F to 212 °F)	
Thread	ISO228 (equivalent to DIN 259 and BS2779)	
Opening/closing test	10000 times	
Size	1/2" 3/4" 1"	

S01-2 | Ball bibcock, Butterfly handle



Features		CE ACS ENEC
Working pressure	16 bar (232 psi)	
Working temperature	from -10°C to +100°C (from 14 °F to 212 °F)	
Thread	ISO228 (equivalent to DIN 259 and BS2779)	
Opening/closing test	10000 times	
Size	1/2" 3/4" 1"	

R01 | Ball bibcock brass colour



Features		CE ACS ENEC
Working pressure	16 bar (232 psi)	
Working temperature	from -10°C to +100°C (from 14 °F to 212 °F)	
Thread	ISO228 (equivalent to DIN 259 and BS2779)	
Opening/closing test	10000 times	
Size	1/2" 3/4" 1"	

R03 | Ball bibcock brass colour



Features		CE ACS ENEC
Working pressure	16 bar (232 psi)	
Working temperature	from -10°C to +100°C (from 14 °F to 212 °F)	
Thread	ISO228 (equivalent to DIN 259 and BS2779)	
Opening/closing test	10000 times	
Size	1/2" 3/4" 1"	

R04 | Stop bibcock brass colour



Features		CE ACS ENEC
Working pressure	16 bar (232 psi)	
Working temperature	from -10°C to +100°C (from 14 °F to 212 °F)	
Thread	ISO228 (equivalent to DIN 259 and BS2779)	
Opening/closing test	10000 times	
Size	1/2" 3/4" 1"	

R05 | Stop hose bibcock brass colour



Features		CE ACS ENEC
Working pressure	16 bar (232 psi)	
Working temperature	from -10°C to +100°C (from 14 °F to 212 °F)	
Thread	ISO228 (equivalent to DIN 259 and BS2779)	
Opening/closing test	10000 times	
Size	1/2" 3/4" 1"	

b. BIBCOCKS



serie **8200**

R06 | Stop hose bibcock, brass colour



Features CE ACS ENI

Working pressure	16 bar (232 psi)		
Working temperature	from -10°C to +100°C (from 14 °F to 212 °F)		
Thread	ISO228 (equivalent to DIN 259 and BS2779)		
Opening/closing test	10000 times		

Size	1/2"x3/4"	3/4"x1"	1"x1-1/4"
-------------	-----------	---------	-----------

R07 | Ball bibcock, brass colour



Features CE ACS ENI

Working pressure	16 bar (232 psi)		
Working temperature	from -10°C to +100°C (from 14 °F to 212 °F)		
Thread	ISO228 (equivalent to DIN 259 and BS2779)		
Opening/closing test	10000 times		

Size	1/2"	3/4"	1"
-------------	------	------	----

R09 | Stop valve, brass colour



Features CE ACS ENI

Working pressure	16 bar (232 psi)		
Working temperature	from -10°C to +120°C (from 14 °F to 248 °F)		
Thread	ISO228 (equivalent to DIN 259 and BS2779)		
Opening/closing test	10000 times		

Size	1/2"	3/4"	1"
-------------	------	------	----

R04 | Ball bibcock, brass colour



Features CE ACS ENI

Working pressure	16 bar (232 psi)		
Working temperature	from -10°C to +100°C (from 14 °F to 212 °F)		
Thread	ISO228 (equivalent to DIN 259 and BS2779)		
Opening/closing test	10000 times		

Size	1/2"	3/4"	1"
-------------	------	------	----

8200-1 | Brass hose connection



Features CE ACS ENI

Working pressure	16 bar (232 psi)		
Working temperature	from -10°C to +100°C (from 14 °F to 212 °F)		
Thread	ISO228 (equivalent to DIN 259 and BS2779)		
Opening/closing test	10000 times		

Size	3/4"	1"	1-1/4"
-------------	------	----	--------

8200-2 | Brass hose connection



Features CE ACS ENI

Working pressure	16 bar (232 psi)		
Working temperature	from -10°C to +100°C (from 14 °F to 212 °F)		
Thread	ISO228 (equivalent to DIN 259 and BS2779)		
Opening/closing test	10000 times		

Size	3/4"
-------------	------

c. GATE VALVES



serie **8300**

8300-1

Stop valve



CE ACS EN

Features

Working pressure 16 bar (232 psi)

Working temperature from -10°C to +120°C (from 14 °F to 248 °F)

Thread ISO228 (equivalent to DIN 259 and BS2779)

Opening/closing test 10000 times

Size 1/2" 3/4" 1" 1 1/4" 1 1/2" 2" 2 1/2" 3" 4"

8300-2

Gate valve,
steel handle



CE ACS EN

Features

Working pressure 16 bar (232 psi)

Working temperature from -10°C to +120°C (from 14 °F to 248 °F)

Thread ISO228 (equivalent to DIN 259 and BS2779)

Opening/closing test 10000 times

Size 1/2" 3/4" 1" 1 1/4" 1 1/2" 2" 2 1/2" 3" 4"

8300-3

Gate valve,
cast-iron handle



CE ACS EN

Features

Working pressure 16 bar (232 psi)

Working temperature from -10°C to +120°C (from 14 °F to 248 °F)

Thread ISO228 (equivalent to DIN 259 and BS2779)

Opening/closing test 10000 times

Size 1/2" 3/4" 1" 1 1/4" 1 1/2" 2" 2 1/2" 3" 4"

8300-4

Y strainers



CE ACS EN

Features

Working pressure 16 bar (232 psi)

Working temperature from -10°C to +120°C (from 14 °F to 248 °F)

Thread ISO228 (equivalent to DIN 259 and BS2779)

Opening/closing test 10000 times

Size 1/2" 3/4" 1" 1 1/4" 1 1/2" 2" 2 1/2" 3" 4"

8300-5

Build-in stop valve



CE ACS EN

Features

Working pressure 16 bar (232 psi)

Working temperature from -10°C to +120°C (from 14 °F to 248 °F)

Thread ISO228 (equivalent to DIN 259 and BS2779)

Opening/closing test 10000 times

Size 1/2" 3/4" 1"

8300-6

Build-in stop valve



CE ACS EN

Features

Working pressure 16 bar (232 psi)

Working temperature from -10°C to +120°C (from 14 °F to 248 °F)

Thread ISO228 (equivalent to DIN 259 and BS2779)

Opening/closing test 10000 times

Size 1/2"

c. GATE VALVES



serie **8300**

8300-7 | Check valve



Features		CE ACS EN	
Working pressure	16 bar (232 psi)		
Working temperature	from -10°C to +120°C (from 14 °F to 248 °F)		
Thread	ISO228 (equivalent to DIN 259 and BS2779)		
Opening/closing test	10000 times		
Size	1/2" 3/4" 1" 1 1/4" 1 1/2" 2" 2 1/2" 3" 4"		

8300-8 | Check valve



Features		CE ACS EN	
Working pressure	16 bar (232 psi)		
Working temperature	from -10°C to +120°C (from 14 °F to 248 °F)		
Thread	ISO228 (equivalent to DIN 259 and BS2779)		
Opening/closing test	10000 times		
Size	1/2" 3/4" 1" 1 1/4" 1 1/2" 2"		

8300-9 | Check valve



Features		CE ACS EN	
Working pressure	16 bar (232 psi)		
Working temperature	from -10°C to +120°C (from 14 °F to 248 °F)		
Thread	ISO228 (equivalent to DIN 259 and BS2779)		
Opening/closing test	10000 times		
Size	1/2" 3/4" 1" 1 1/4" 1 1/2" 2" 2 1/2" 3" 4"		

8300-10 | Check valve



Features		CE ACS EN	
Working pressure	16 bar (232 psi)		
Working temperature	from -10°C to +120°C (from 14 °F to 248 °F)		
Thread	ISO228 (equivalent to DIN 259 and BS2779)		
Opening/closing test	10000 times		
Size	1/2" 3/4" 1" 1 1/4" 1 1/2" 2" 2 1/2" 3" 4"		

8300-11 | Strainer for foot valve,



Features		CE ACS EN	
Working pressure	16 bar (232 psi)		
Working temperature	from -10°C to +120°C (from 14 °F to 248 °F)		
Thread	ISO228 (equivalent to DIN 259 and BS2779)		
Opening/closing test	10000 times		
Size	1/2" 3/4" 1" 1 1/4" 1 1/2" 2" 2 1/2" 3" 4"		

8300-12 | Check valve



Features		CE ACS EN	
Working pressure	16 bar (232 psi)		
Working temperature	from -10°C to +120°C (from 14 °F to 248 °F)		
Thread	ISO228 (equivalent to DIN 259 and BS2779)		
Opening/closing test	10000 times		
Size	1/2" 3/4" 1" 1 1/4" 1 1/2" 2" 2 1/2" 3" 4"		

c. GATE VALVES



serie **8300**

8300-13 | Stop hose bibcock, brass colour



Features		
Working pressure 16 bar (232 psi)		
Working temperature from -10°C to +100°C (from 14 °F to 212 °F)		
Thread ISO228 (equivalent to DIN 259 and BS2779)		
Opening/closing test 10000 times		

Size	1/2"x3/4"	3/4"x1"
------	-----------	---------

8300-14 | Floating valve



Features		
Working pressure 16 bar (232 psi)		
Working temperature from -10°C to +120°C (from 14 °F to 248 °F)		
Thread ISO228 (equivalent to DIN 259 and BS2779)		
Opening/closing test 10000 times		

Size	1/2"	3/4"	1"
------	------	------	----

8300-15 | Floating valve



Features		
Working pressure 16 bar (232 psi)		
Working temperature from -10°C to +120°C (from 14 °F to 248 °F)		
Thread ISO228 (equivalent to DIN 259 and BS2779)		
Opening/closing test 10000 times		

Size	1/2"	3/4"	1"	1"1/4"	1"1/2"	2"
------	------	------	----	--------	--------	----

8300-16 | Air vent



Features		
Working pressure 16 bar (232 psi)		
Working temperature from -10°C to +120°C (from 14 °F to 248 °F)		
Thread ISO228 (equivalent to DIN 259 and BS2779)		
Opening/closing test 10000 times		

Size	1/2"	3/4"
------	------	------

d. ANGLE VALVES



serie **8400**

8400-1

Angle valve



Features

Working pressure 10 bar (145 psi)
Working temperature from -10°C to +120°C (from 32 °F to 176 °F)
Thread ISO228 (equivalent to DIN 259 and BS2779)
Opening/closing test 10000 times

Size 1/2"x1/2" 1/2"x3/4"

CE ACS ENEC

8400-2

Angle valve, with nut



Features

Working pressure 10 bar (145 psi)
Working temperature from -10°C to +120°C (from 32 °F to 176 °F)
Thread ISO228 (equivalent to DIN 259 and BS2779)
Opening/closing test 10000 times

Size 1/2"x10mm

CE ACS ENEC

8400-3

Double way angle valve



Features

Working pressure 10 bar (145 psi)
Working temperature from -10°C to +120°C (from 32 °F to 176 °F)
Thread ISO228 (equivalent to DIN 259 and BS2779)
Opening/closing test 10000 times

Size 1/2"x1/2"x1/2"

CE ACS ENEC

8400-4

Angle valve



Features

Working pressure 10 bar (145 psi)
Working temperature from -10°C to +120°C (from 32 °F to 176 °F)
Thread ISO228 (equivalent to DIN 259 and BS2779)
Opening/closing test 10000 times

Size 1/2"x3/8" 1/2"x1/2"

CE ACS ENEC

8400-5

Angle valve



Features

Working pressure 10 bar (145 psi)
Working temperature from -10°C to +120°C (from 32 °F to 176 °F)
Thread ISO228 (equivalent to DIN 259 and BS2779)
Opening/closing test 10000 times

Size 1/2"x1/2"x1/2"

CE ACS ENEC

8400-6

Angle valve, with nut



Features

Working pressure 10 bar (145 psi)
Working temperature from -10°C to +120°C (from 32 °F to 176 °F)
Thread ISO228 (equivalent to DIN 259 and BS2779)
Opening/closing test 10000 times

Size 1/2"x10mm

CE ACS ENEC

d. ANGLE VALVES



serie **8400**

8400-7 | Angle valve



CE ACS EBC

Features

Working pressure 10 bar (145 psi)

Working temperature from -10°C to +120°C (from 32 °F to 176 °F)

Thread ISO228 (equivalent to DIN 259 and BS2779)

Opening/closing test 10000 times

Size 1/2"x3/8" 1/2"x1/2"

8400-8 | Angle valve



CE ACS EBC

Features

Working pressure 10 bar (145 psi)

Working temperature from -10°C to +120°C (from 32 °F to 176 °F)

Thread ISO228 (equivalent to DIN 259 and BS2779)

Opening/closing test 10000 times

Size 1/2"x10mm

8400-9 | Angle valve, ceramic core



CE ACS EBC

Features

Working pressure 10 bar (145 psi)

Working temperature from -10°C to +120°C (from 32 °F to 176 °F)

Thread ISO228 (equivalent to DIN 259 and BS2779)

Opening/closing test 10000 times

Size 1/2"x1/2"

8400-10 | Angle ball valve for washing machine



CE ACS EBC

Features

Working pressure 10 bar (145 psi)

Working temperature from -10°C to +120°C (from 32 °F to 176 °F)

Thread ISO228 (equivalent to DIN 259 and BS2779)

Opening/closing test 10000 times

Size 1/2"x1/2" 1/2"x3/4"

8400-11 | Straight two-pipe valve, with adapter



CE ACS EBC

Features

Working pressure 10 bar (145 psi)

Working temperature from -10°C to +120°C (from 32 °F to 176 °F)

Thread ISO228 (equivalent to DIN 259 and BS2779)

Opening/closing test 10000 times

Size M1/2"xM3/4"

8400-12 | Angle valve



CE ACS EBC

Features

Working pressure 10 bar (145 psi)

Working temperature from -10°C to +120°C (from 32 °F to 176 °F)

Thread ISO228 (equivalent to DIN 259 and BS2779)

Opening/closing test 10000 times

Size 1/2"x3/8" 1/2"x1/2"

d. ANGLE VALVES



serie **8400**

8400-12 | Angle valve,



CE ACS EN

Features

Working pressure 10 bar (145 psi)
Working temperature from -10°C to +120°C (from 32 °F to 176 °F)
Thread ISO228 (equivalent to DIN 259 and BS2779)
Opening/closing test 10000 times

Size 1/2

8400-13 | Angle valve



CE ACS EN

Features

Working pressure 10 bar (145 psi)
Working temperature from -10°C to +120°C (from 32 °F to 176 °F)
Thread ISO228 (equivalent to DIN 259 and BS2779)
Opening/closing test 10000 times

Size 1/2

8400-14 | Angle valve



CE ACS EN

Features

Working pressure 10 bar (145 psi)
Working temperature from -10°C to +120°C (from 32 °F to 176 °F)
Thread ISO228 (equivalent to DIN 259 and BS2779)
Opening/closing test 10000 times

Size 1/2

8400-15 | Straight two-pipe valve



CE ACS EN

Features

Working pressure 10 bar (145 psi)
Working temperature from -10°C to +120°C (from 32 °F to 176 °F)
Thread ISO228 (equivalent to DIN 259 and BS2779)
Opening/closing test 10000 times

Size 1/2

8400-16 | Straight two-pipe valve



CE ACS EN

Features

Working pressure 10 bar (145 psi)
Working temperature from -10°C to +120°C (from 32 °F to 176 °F)
Thread ISO228 (equivalent to DIN 259 and BS2779)
Opening/closing test 10000 times

Size F3/4"xM3/4"

8400-17 | Straight two-pipe valve



CE ACS EN

Features

Working pressure 10 bar (145 psi)
Working temperature from -10°C to +120°C (from 32 °F to 176 °F)
Thread ISO228 (equivalent to DIN 259 and BS2779)
Opening/closing test 10000 times

Size F3/4"xM3/4"



a. PEX-AL -PEX FITTINGS

PEX FITTINGS

b. BRASS SCREW FITTINGS

c. PRESSURE FITTINGS

d. PPSU FITTINGS

e. SLIDING SLEEVE FITTINGS (push fitting)

f. COPPER PIPE FITTINGS

g. BRASS SCREW FITTINGS NICKEL PLATED



Raccordi a stringere per tubo multistrato *Compression fittings for multilayer pipe*

Prodotto certificato
Certified product



a. PEX-AL-PEX FITTINGS PEX FITTINGS



serie **8500**

8500-1 | Male socket



Size	Size
S16x1/2"M	S15x1/2"M
S16x3/4"M	S22x3/4"M
S18x1/2"M	S28x1"M
S18x3/4"M	
S20x1/2"M	
S20x3/4"M	
S25x1/2"M	
S25x3/4"M	
S25x1 "M	
S26x1/2"M	
S26x3/4"M	
S26x1 "M	
S32x3/4"M	
S32x1"M	
S32x1 1/4"M	

Features

Working pressure 10 bar

Working temperature from -20°C to +95°C

Thread ISO228 (equivalent to DIN 259 and BS2779)

Opening/closing test 10000 times

CE ACS ERI

8500-2 | Female socket



Size	Size
S16x1/2"F	S15x1/2"F
S16x3/4"F	S22x3/4"F
S18x1/2"F	S28x1"F
S18x3/4"F	
S20x1/2"F	
S20x3/4"F	
S25x1/2"F	
S25x3/4"F	
S25x1"F	
S26x1/2"F	
S26x3/4"F	
S26x1"F	
S32x3/4"F	
S32x1"F	
S32x1-1/4"F	

Features

Working pressure 10 bar

Working temperature from -20°C to +95°C

Thread ISO228 (equivalent to DIN 259 and BS2779)

Opening/closing test 10000 times

CE ACS ERI

8500-3 | Socket



Size	Size
S16x16	S25x20
S18x18	S26x16
S20x20	S26x18
S25x25	S26x20
S26x26	S32x16
S32x32	S32x18
S20x16	S32x20
S20x18	S32x25
S25x16	S32x26
S25x18	S15x15
	S22x22
	S28x28

Features

Working pressure 10 bar

Working temperature from -20°C to +95°C

Thread ISO228 (equivalent to DIN 259 and BS2779)

Opening/closing test 10000 times

CE ACS ERI

8500-4 | Male elbow



Size	Size
L16x1/2"M	L15x1/2"M
L16x3/4"M	L22x3/4"M
L18x1/2"M	L28x1"M
L20x1/2"M	
L20x3/4"M	
L25x1/2"M	
L25x3/4"M	
L25x1"M	
L26x1/2"M	
L26x3/4"M	
L26x1"M	
L32x1/2"M	
L32x3/4"M	
L32x1"M	
L32x1-1/4"M	

Features

Working pressure 10 bar

Working temperature from -20°C to +95°C

Thread ISO228 (equivalent to DIN 259 and BS2779)

Opening/closing test 10000 times

CE ACS ERI

8500-5 | Female elbow



Size	Size
L16x1/2"F	L15x1/2"F
L16x3/4"F	L22x3/4"F
L18x1/2"F	L28x1"F
L20x1/2"F	
L20x3/4"F	
L25x1/2"F	
L25x3/4"F	
L25x1"F	
L26x1/2"F	
L26x3/4"F	
L26x1"F	
L32x1/2"F	
L32x3/4"F	
L32x1"F	
L32x1 1/4"F	

Features

Working pressure 10 bar

Working temperature from -20°C to +95°C

Thread ISO228 (equivalent to DIN 259 and BS2779)

Opening/closing test 10000 times

CE ACS ERI

8500-6 | Elbow



Size	Size
L16x16	L25x20
L18x18	L26x16
L20x20	L26x18
L25x25	L26x20
L26x26	L32x16
L32x32	L32x18
L20x16	L32x20
L20x18	L32x25
L25x16	L32x26
L25x18	L15x15
	L22x22
	L28x28

Features

Working pressure 10 bar

Working temperature from -20°C to +95°C

Thread ISO228 (equivalent to DIN 259 and BS2779)

Opening/closing test 10000 times

CE ACS ERI

a. PEX-AL-PEX FITTINGS PEX FITTINGS



serie **8500**

8500-7 | Male tee



Size	Size
T16x1/2Mx16	T15x1/2Mx15
T16x3/4Mx16	T22x3/4Mx22
T18x1/2Mx18	T28x1Mx28
T20x1/2Mx20	
T20x3/4Mx20	
T25x1/2Mx25	
T25x3/4Mx25	
T25x1 Mx25	
T26x1/2Mx26	
T26x3/4Mx26	
T26x1 Mx26	
T32x1/2Mx32	
T32x3/4Mx32	
T32x1 Mx32	
T32x1 1/4Mx32	

Features

Working pressure 10 bar

Working temperature from -20°C to +95°C

Thread ISO228 (equivalent to DIN 259 and BS2779)

Opening/closing test 10000 times

CE ACS EN

8500-8 | Female tee



Size	Size
T16x1/2Fx16	T15x1/2Fx15
T16x3/4Fx16	T22x3/4Fx22
T18x1/2Fx18	T28x1Fx28
T20x1/2Fx20	
T20x3/4Fx20	
T25x1/2Fx25	
T25x3/4Fx25	
T25x1Fx25	
T26x1/2Fx26	
T26x3/4Fx26	
T26x1Fx26	
T32x1/2Fx32	
T32x3/4Fx32	
T32x1 Fx32	
T32x1 1/4Fx32	

Features

Working pressure 10 bar

Working temperature from -20°C to +95°C

Thread ISO228 (equivalent to DIN 259 and BS2779)

Opening/closing test 10000 times

CE ACS EN

8500-9 | Tee



Size
T16x16x16
T18x18x18
T20x20x20
T25x25x25
T26x26x26
T32x32x32
T15x15x15
T22x22x22
T28x28x28

Features

Working pressure 10 bar

Working temperature from -20°C to +95°C

Thread ISO228 (equivalent to DIN 259 and BS2779)

Opening/closing test 10000 times

CE ACS EN

8500-10 | Reducing tee



Size	Size
T20x16x20	T32x18x32
T20x18x20	T32x20x32
T25x16x25	T32x25x32
T25x18x25	T32x26x32
T25x20x25	T16x20x16
T26x16x26	T20x26x20
T26x18x26	T16x16x20
T26x20x26	T20x20x16
T32x16x32	

Features

Working pressure 10 bar

Working temperature from -20°C to +95°C

Thread ISO228 (equivalent to DIN 259 and BS2779)

Opening/closing test 10000 times

CE ACS EN

8500-11 | Seated elbow



Size
ZL16x1/2"F
ZL18x1/2"F
ZL20x1/2"F
ZL20x3/4"F

Features

Working pressure 10 bar

Working temperature from -20°C to +95°C

Thread ISO228 (equivalent to DIN 259 and BS2779)

Opening/closing test 10000 times

CE ACS EN

8500-12 | Cross tee



Size
16x16x16x16
20x20x20x20

Features

Working pressure 10 bar

Working temperature from -20°C to +95°C

Thread ISO228 (equivalent to DIN 259 and BS2779)

Opening/closing test 10000 times

CE ACS EN

a. PEX-AL-PEX FITTINGS PEX FITTINGS



serie **8500**

8500-13 | Female Socket Union



Size
16x1/2F
16x3/4F
18x1/2F
20x1/2F
20x3/4F

Features	CE ACS EN
Working pressure	10 bar
Working temperature	from -20°C to +95°C
Thread	ISO228 (equivalent to DIN 259 and BS2779)
Opening/closing test	10000 times

8500-14 | Female Elbow Union



Size
16x1/2F
16x3/4F
18x1/2F
20x1/2F
20x3/4F

Features	CE ACS EN
Working pressure	10 bar
Working temperature	from -20°C to +95°C
Thread	ISO228 (equivalent to DIN 259 and BS2779)
Opening/closing test	10000 times

8500-15 | Wallplate elbow



Size
15X1/2"
16X1/2"
18X1/2"

Features	CE ACS EN
Working pressure	10 bar
Working temperature	from -20°C to +95°C
Thread	ISO228 (equivalent to DIN 259 and BS2779)
Opening/closing test	10000 times

8500-16 | Plastic box molds 5



Size

Features	CE ACS EN
Working pressure	10 bar
Working temperature	from -20°C to +95°C
Thread	ISO228 (equivalent to DIN 259 and BS2779)
Opening/closing test	10000 times

8500-17 | Wallplate elbow



Size

Features	CE ACS EN
Working pressure	10 bar
Working temperature	from -20°C to +95°C
Thread	ISO228 (equivalent to DIN 259 and BS2779)
Opening/closing test	10000 times

8500-18 | Plastic box molds



Size

Features	CE ACS EN
Working pressure	10 bar
Working temperature	from -20°C to +95°C
Thread	ISO228 (equivalent to DIN 259 and BS2779)
Opening/closing test	10000 times

a. PEX-AL-PEX FITTINGS PEX FITTINGS



serie **8500**

8500-19 | Wallplate elbow



Size
15X1/2"
16X1/2"
18X1/2"

Features

Working pressure 10 bar
Working temperature from -20°C to +95°C
Thread ISO228 (equivalent to DIN 259 and BS2779)
Opening/closing test 10000 times

CE ACS G FRI

8500-20 | Plastic box molds 1



Size
16x1/2"

Features

Working pressure 10 bar
Working temperature from -20°C to +95°C
Thread ISO228 (equivalent to DIN 259 and BS2779)
Opening/closing test 10000 times

CE ACS G FRI

8500-21 | Wallplate elbow



Size
15X1/2"
16X1/2"
18X1/2"

Features

Working pressure 10 bar
Working temperature from -20°C to +95°C
Thread ISO228 (equivalent to DIN 259 and BS2779)
Opening/closing test 10000 times

CE ACS G FRI

8500-22 | Plastic box molds 4



Size

Features

Working pressure 10 bar
Working temperature from -20°C to +95°C
Thread ISO228 (equivalent to DIN 259 and BS2779)
Opening/closing test 10000 times

CE ACS G FRI

8500-23 | Wallplate elbow



Size
15X1/2"
16X1/2"
18X1/2"

Features

Working pressure 10 bar
Working temperature from -20°C to +95°C
Thread ISO228 (equivalent to DIN 259 and BS2779)
Opening/closing test 10000 times

CE ACS G FRI

8500-24 | Plastic box molds 2



Size
15X1/2"
16X1/2"
18X1/2"

Features

Working pressure 10 bar
Working temperature from -20°C to +95°C
Thread ISO228 (equivalent to DIN 259 and BS2779)
Opening/closing test 10000 times

CE ACS G FRI

a. BRASS BALL VALVES



serie **8500**

8500-25 | Ball valve, pex valve, Butterfly handle



Features				
Working pressure 25 bar (362.5 psi)				
Working temperature from -10°C to +120°C (from 14 °F to 248 °F)				
Thread ISO228 (equivalent to DIN 259 and BS2779)				
Opening/closing test 10000 times				
Size				
16x16	18x18	20x20	25x25	

8500-26 | Ball valve, pex valve, Butterfly handle



Features		CE ACS EN		
Working pressure 25 bar (362.5 psi)				
Working temperature from -10°C to +120°C (from 14 °F to 248 °F)				
Thread ISO228 (equivalent to DIN 259 and BS2779)				
Opening/closing test 10000 times				
Size				
16x16	20x20			

8500-27 | Ball valve, female pex valve, Butterfly handle



Features				
Working pressure 25 bar (362.5 psi)				
Working temperature from -10°C to +120°C (from 14 °F to 248 °F)				
Thread ISO228 (equivalent to DIN 259 and BS2779)				
Opening/closing test 10000 times				
Size				
16x1/2F	16x3/4F	18x1/2F	20x1/2F	20x3/4F

8500-28 | Ball valve, female pex valve, Butterfly handle



Features		CE ACS EN		
Working pressure 25 bar (362.5 psi)				
Working temperature from -10°C to +120°C (from 14 °F to 248 °F)				
Thread ISO228 (equivalent to DIN 259 and BS2779)				
Opening/closing test 10000 times				
Size				
16x1/2F	20x3/4F			

8500-29 | Ball valve, male pex valve, Butterfly handle



Features				
Working pressure 25 bar (362.5 psi)				
Working temperature from -10°C to +120°C (from 14 °F to 248 °F)				
Thread ISO228 (equivalent to DIN 259 and BS2779)				
Opening/closing test 10000 times				
Size				
16x3/4M	18x1/2M	20x1/2M	20x3/4M	

8500-30 | Ball valve, male pex valve, Butterfly handle



Features		CE ACS EN		
Working pressure 25 bar (362.5 psi)				
Working temperature from -10°C to +120°C (from 14 °F to 248 °F)				
Thread ISO228 (equivalent to DIN 259 and BS2779)				
Opening/closing test 10000 times				
Size				
16x1/2M	20x3/4M			

a. BRASS BALL VALVES



serie **8500**

8500-31 | Wallplate male elbow



Size
16x3/4M

Features

Working pressure 10 bar

Working temperature from -20°C to +95°C

Thread ISO228 (equivalent to DIN 259 and BS2779)

Opening/closing test 10000 times

CE ACS EN

8500-32 | Wallplate female elbow



Size
16x1/2F

Features

Working pressure 10 bar

Working temperature from -20°C to +95°C

Thread ISO228 (equivalent to DIN 259 and BS2779)

Opening/closing test 10000 times

CE ACS EN

8500-33 | Ball valve pressure valve



Size
16mm
20mm

Features

Working pressure 25 bar (362.5 psi)

Working temperature from -10°C to +120°C (from 14 °F to 248 °F)

Thread ISO228 (equivalent to DIN 259 and BS2779)

Opening/closing test 10000 times

CE ACS EN

8500-34 | Ball valve, pex valve, Butterfly handle



Size
1/2FF
3/4FF

Features

Working pressure 25 bar (362.5 psi)

Working temperature from -10°C to +120°C (from 14 °F to 248 °F)

Thread ISO228 (equivalent to DIN 259 and BS2779)

Opening/closing test 10000 times

CE ACS EN

8500-35 | Ball valve, pex valve,



Size
16mm
20mm

Features

Working pressure 25 bar (362.5 psi)

Working temperature from -10°C to +120°C (from 14 °F to 248 °F)

Thread ISO228 (equivalent to DIN 259 and BS2779)

Opening/closing test 10000 times

CE ACS EN

Size 16x1/2F 16x3/4F 18x1/2F 20x1/2F 20x3/4F

b. BRASS SCREW FITTINGS



serie **8900**

8900-1 | Nipple



Size

1/8"
1/4"
3/8"
1/2"
3/4"
1"
1 1/4"
1 1/2"
2"
2 1/2"
3"
4"

CE ACS ERI

Features

Working pressure 10 bar

Working temperature from -20°C to +95°C

Thread ISO228 (equivalent to DIN 259 and BS2779)

Opening/closing test 10000 times

8900-2 | Reduce nipple



Size

1/4"x1/8" 1 1/2"x3/4"
3/8"x1/4" 1 1/2"x1"
1/2"x1/4" 1 1/2"x1 1/4"
1/2"x3/8" 2"x1"
3/4"x3/8" 2"x1 1/4"
3/4"x1/2" 2"x1 1/2"
1"x1/2" 2 1/2"x2"
1"x3/4" 3"x2"
1 1/4"x1/2" 3"x2 1/2"
1 1/4"x3/4" 4"x2 1/2"
1 1/4"x1" 4"x3"

CE ACS ERI

Features

Working pressure 10 bar

Working temperature from -20°C to +95°C

Thread ISO228 (equivalent to DIN 259 and BS2779)

Opening/closing test 10000 times

8900-3 | Bushing



Size

1/4"x1/8" 1 1/2"x1"
3/8"x1/8" 1 1/2"x1 1/4"
3/8"x1/4" 2"x1/2"
1/2"x1/4" 2"x3/4"
1/2"x3/8" 2"x1"
3/4"x1/4" 2"x1 1/4"
3/4"x3/8" 2"x1 1/2"
3/4"x1/2" 2 1/2"x2"
1"x3/8" 3"x1 1/4"
1"x1/2" 3"x1 1/2"
1"x3/4" 3"x2"
1 1/4"x1/2" 3"x2 1/2"
1 1/4"x3/4" 4"x2"
1 1/4"x1" 4"x2 1/2"
1 1/2"x1/2" 4"x3"
1 1/2"x3/4"

CE ACS ERI

Features

Working pressure 10 bar

Working temperature from -20°C to +95°C

Thread ISO228 (equivalent to DIN 259 and BS2779)

Opening/closing test 10000 times

8900-4 | Nipple+nut+washer



Size

3/8"x3/8"
1/2"x3/8"

CE ACS ERI

Features

Working pressure 10 bar

Working temperature from -20°C to +95°C

Thread ISO228 (equivalent to DIN 259 and BS2779)

Opening/closing test 10000 times

8900-5 | Male plug



Size

1/8"
1/4"
3/8"
1/2"
3/4"
1"
1 1/4"
1 1/2"
2"
2 1/2"
3"

CE ACS ERI

Features

Working pressure 10 bar

Working temperature from -20°C to +95°C

Thread ISO228 (equivalent to DIN 259 and BS2779)

Opening/closing test 10000 times

8900-6 | Female plug



Size

1/8"
1/4"
3/8"
1/2"
3/4"
1"
1 1/4"
1 1/2"
2"
2 1/2"

CE ACS ERI

Features

Working pressure 10 bar

Working temperature from -20°C to +95°C

Thread ISO228 (equivalent to DIN 259 and BS2779)

Opening/closing test 10000 times

b. BRASS SCREW FITTINGS



serie **8900**

8900-7 | Socket



Size
1/8"
1/4"
3/8"
1/2"
3/4"
1"
1 1/4"
1 1/2"
2"
2 1/2"
3"

Features

Working pressure 10 bar
Working temperature from -20°C to +95°C
Thread ISO228 (equivalent to DIN 259 and BS2779)
Opening/closing test 10000 times

CE ACS ERI

8900-8 | Reduce socket



Size
1/8"x1/4"
3/8"x1/8"
1/2"x3/8"
3/4"x1/2"
1"x3/8"
1"x1/2"
1"x3/4"
1 1/4"x1/2"
1 1/4"x3/4"
1 1/4"x1"
1 1/2"x1/2"
1 1/2"x3/4"
1 1/2"x1"
1 1/2"x1 1/4"
2"x3/4"
2"x1"
2"x1 1/4"
2"x1 1/2"

Features

Working pressure 10 bar
Working temperature from -20°C to +95°C
Thread ISO228 (equivalent to DIN 259 and BS2779)
Opening/closing test 10000 times

CE ACS ERI

8900-9 | Male hose



Size	Size
1/8"x10	3/4"x20
1/8"x14	3/4"x25
1/4"x10	1"x25
1/4"x14	1"x30
3/8"x10	1 1/4"x30
3/8"x12	1 1/4"x35
3/8"x14	1 1/4"x40
1/2"x10	1 1/2"x40
1/2"x12	1 1/2"x45
1/2"x14	2"x50
1/2"x16	2 1/2"x60
1/2"x18	3"x80
1/2"x20	4"x100
1/2"x25	

Features

Working pressure 10 bar
Working temperature from -20°C to +95°C
Thread ISO228 (equivalent to DIN 259 and BS2779)
Opening/closing test 10000 times

CE ACS ERI

8900-10 | Female hose



Size	Size
1/8"x10	1/2"x18
1/8"x14	1/2"x20
1/4"x10	3/4"x20
1/4"x14	3/4"x25
3/8"x10	1"x25
3/8"x12	1"x30
3/8"x14	1 1/4"x30
1/2"x10	1 1/4"x35
1/2"x12	1 1/4"x40
1/2"x14	1 1/2"x40
1/2"x16	2"x50

Features

Working pressure 10 bar
Working temperature from -20°C to +95°C
Thread ISO228 (equivalent to DIN 259 and BS2779)
Opening/closing test 10000 times

CE ACS ERI

8900-11 | Casket



Size
1/8"
1/4"
3/8"
1/2"
3/4"
1"
1 1/4"

Features

Working pressure 10 bar
Working temperature from -20°C to +95°C
Thread ISO228 (equivalent to DIN 259 and BS2779)
Opening/closing test 10000 times

CE ACS ERI

8900-12 | Screw



Size
1/2"
3/4"
1"
1 1/4"
1 1/2"
2"

Features

Working pressure 10 bar
Working temperature from -20°C to +95°C
Thread ISO228 (equivalent to DIN 259 and BS2779)
Opening/closing test 10000 times

CE ACS ERI

b. BRASS SCREW FITTINGS



serie **8900**

8900-13 | Male ring



Size
3/8"x1/4"
1/2"x1/4"
1/2"x3/8"
3/4"x3/8"
3/4"x1/2"
1"x1/2"
1"x3/4"
1 1/4"x1"
1 1/2"x1 1/4"
2"x3/4"
2"x1"
2"x1 1/4"
2"x1 1/2"

CE ACS ENEC

Features

Working pressure 10 bar

Working temperature from -20°C to +95°C

Thread ISO228 (equivalent to DIN 259 and BS2779)

Opening/closing test 10000 times

8900-14 | Adaptor



Size
1/2"x10
1/2"x15
1/2"x20
1/2"x25
1/2"x30
1/2"x40
1/2"x50

CE ACS ENEC

Features

Working pressure 10 bar

Working temperature from -20°C to +95°C

Thread ISO228 (equivalent to DIN 259 and BS2779)

Opening/closing test 10000 times

8900-15 | Male adaptor



Size
1/2"x75
1/2"x100
1/2"x150
1/2"x200
3/4"x250
3/4"x300
1"x250
1"x300

CE ACS ENEC

Features

Working pressure 10 bar

Working temperature from -20°C to +95°C

Thread ISO228 (equivalent to DIN 259 and BS2779)

Opening/closing test 10000 times

8900-16 | Female male adaptor



Size	Size
3/8"x10	1/2"x100
3/8"x15	3/4"x10
3/8"x20	3/4"x15
3/8"x25	3/4"x20
3/8"x30	3/4"x25
3/8"x40	3/4"x30
3/8"x50	3/4"x40
1/2"x12	3/4"x50
1/2"x15	3/4"x60
1/2"x20	3/4"x70
1/2"x25	3/4"x80
1/2"x30	3/4"x100
1/2"x40	1"x10
1/2"x50	1"x15
1/2"x55	1"x20
1/2"x60	1"x25
1/2"x70	1"x30
1/2"x75	1"x40
1/2"x80	1"x50

CE ACS ENEC

Features

Working pressure 10 bar

Working temperature from -20°C to +95°C

Thread ISO228 (equivalent to DIN 259 and BS2779)

Opening/closing test 10000 times

8900-17 | Male adaptor



Size	Size	Size	Size	Size	Size
3/8"x60	3/4"x50	1"x50	1 1/4"x50	1 1/2"x50	2"x50
1/2"x40	3/4"x60	1"x60	1 1/4"x60	1 1/2"x60	2"x60
1/2"x50	3/4"x65	1"x70	1 1/4"x70	1 1/2"x70	2"x70
3/4"x55	3/4"x70	1"x75	1 1/4"x80	1 1/2"x80	2"x80
1/2"x60	3/4"x75	1"x80	1 1/4"x90	1 1/2"x90	2"x90
1/2"x70	3/4"x80	1"x100	1 1/4"x100	1 1/2"x100	2"x100
1/2"x75	3/4"x100	1"x120	1 1/4"x120	1 1/2"x120	2"x120
1/2"x80	3/4"x120	1"x125	1 1/4"x130	1 1/2"x130	2"x140
1/2"x100	3/4"x125	1"x150	1 1/4"x150	1 1/2"x150	2"x150
1/2"x120	3/4"x150	1"x175	1 1/4"x180	1 1/2"x180	2"x190
1/2"x125	3/4"x175	1"x200	1 1/4"x200	1 1/2"x200	2"x200
1/2"x150	3/4"x200	1"x225	1 1/4"x230	1 1/2"x230	2"x240
1/2"x175	3/4"x225	1"x300	1 1/4"x250	1 1/2"x250	2"x250
1/2"x190	3/4"x250	1"x400	1 1/4"x300	1 1/2"x300	2"x300
1/2"x200	3/4"x300	1"x500	1 1/4"x330		
1/2"x225	3/4"x325	1"x525	1 1/4"x430		
1/2"x250	3/4"x400		1 1/4"x530		
1/2"x300	3/4"x425				
1/2"x400	3/4"x500				
1/2"x500	3/4"x525				

CE ACS ENEC

Features

Working pressure 10 bar

Working temperature from -20°C to +95°C

Thread ISO228 (equivalent to DIN 259 and BS2779)

Opening/closing test 10000 times

b. BRASS SCREW FITTINGS



serie **8900**

8900-18 | Tee



Size
1/4"
3/8"
1/2"
3/4"
1"
1 1/4"
1 1/2"
2"
2 1/2"
3"
4"

CE ACS ENEC

Features

Working pressure 10 bar

Working temperature from -20°C to +95°C

Thread ISO228 (equivalent to DIN 259 and BS2779)

Opening/closing test 10000 times

8900-19 | Reduce tee



Size
3/4"x1/2"x3/4"
1"x3/4"x1"
1"x3/4"x1"

CE ACS ENEC

Features

Working pressure 10 bar

Working temperature from -20°C to +95°C

Thread ISO228 (equivalent to DIN 259 and BS2779)

Opening/closing test 10000 times

8900-20 | Tee female/male/female



Size
1/2"x1/2"x1/2"
3/4"x3/4"x3/4"
1"x1"x1"

CE ACS ENEC

Features

Working pressure 10 bar

Working temperature from -20°C to +95°C

Thread ISO228 (equivalent to DIN 259 and BS2779)

Opening/closing test 10000 times

8900-21 | Tee male/male/male



Size
1/2"x1/2"x1/2"
3/4"x3/4"x3/4"
1"x1"x1"

CE ACS ENEC

Features

Working pressure 10 bar

Working temperature from -20°C to +95°C

Thread ISO228 (equivalent to DIN 259 and BS2779)

Opening/closing test 10000 times

8900-22 | Tee male/Female/male



Size
1/2"x1/2"x1/2"

CE ACS ENEC

Features

Working pressure 10 bar

Working temperature from -20°C to +95°C

Thread ISO228 (equivalent to DIN 259 and BS2779)

Opening/closing test 10000 times

8900-23 | Tee male/female/female



Size
1" H=72
1" H=82
1" H=92

CE ACS ENEC

Features

Working pressure 10 bar

Working temperature from -20°C to +95°C

Thread ISO228 (equivalent to DIN 259 and BS2779)

Opening/closing test 10000 times

b. BRASS SCREW FITTINGS



serie **8900**

8900-24 | elbow



Size

1/4"
3/8"
1/2"
3/4"
1"
1 1/4"
1 1/2"
2"
2 1/2"
3"

Features

Working pressure 10 bar
Working temperature from -20°C to +95°C
Thread ISO228 (equivalent to DIN 259 and BS2779)
Opening/closing test 10000 times

CE ACS EN

8900-25 | Male/female Elbow



Size

1/4"
3/8"
1/2"
3/4"
1"
1 1/4"
1 1/2"
2"
2 1/2"
3"

Features

Working pressure 10 bar
Working temperature from -20°C to +95°C
Thread ISO228 (equivalent to DIN 259 and BS2779)
Opening/closing test 10000 times

CE ACS EN

8900-26 | Male elbow



Size

1/2"x1/2"
3/4"x3/4"
1"x1"

Features

Working pressure 10 bar
Working temperature from -20°C to +95°C
Thread ISO228 (equivalent to DIN 259 and BS2779)
Opening/closing test 10000 times

CE ACS EN

8900-27 | Reduce elbow



Size

3/4"x1/2"
1"x3/4"

Features

Working pressure 10 bar
Working temperature from -20°C to +95°C
Thread ISO228 (equivalent to DIN 259 and BS2779)
Opening/closing test 10000 times

CE ACS EN

8900-28 | Seated elbow



Size
1/2"

Features

Working pressure 10 bar
Working temperature from -20°C to +95°C
Thread ISO228 (equivalent to DIN 259 and BS2779)
Opening/closing test 10000 times

CE ACS EN

8900-29 | 45° elbow



Size

1/2"
3/4"
1"
1 1/4"
1 1/2"
2"

Features

Working pressure 10 bar
Working temperature from -20°C to +95°C
Thread ISO228 (equivalent to DIN 259 and BS2779)
Opening/closing test 10000 times

CE ACS EN

b. BRASS SCREW FITTINGS



serie **8900**

8900-30 | 45° elbow Female/male



Size

1/2"
3/4"
1"
1 1/4"
1 1/2"
2"

Features

Working pressure 10 bar

Working temperature from -20°C to +95°C

Thread ISO228 (equivalent to DIN 259 and BS2779)

Opening/closing test 10000 times

CE ACS ERI

8900-31 | Cross tee



Size

1/2"
3/4"
1"
1 1/4"
1 1/2"
2"

Features

Working pressure 10 bar

Working temperature from -20°C to +95°C

Thread ISO228 (equivalent to DIN 259 and BS2779)

Opening/closing test 10000 times

CE ACS ERI

8900-32 | Female union



Size

3/8"
1/2"
3/4"
1"
1 1/4"
1 1/2"
2"

Features

Working pressure 10 bar

Working temperature from -20°C to +95°C

Thread ISO228 (equivalent to DIN 259 and BS2779)

Opening/closing test 10000 times

CE ACS ERI

8900-33 | Male union



Size

1/2"
3/4"
1"

Features

Working pressure 10 bar

Working temperature from -20°C to +95°C

Thread ISO228 (equivalent to DIN 259 and BS2779)

Opening/closing test 10000 times

CE ACS ERI

8900-34 | Female elbow union



Size

1/2"
3/4"
1"
1 1/4"
1 1/2"
2"

Features

Working pressure 10 bar

Working temperature from -20°C to +95°C

Thread ISO228 (equivalent to DIN 259 and BS2779)

Opening/closing test 10000 times

CE ACS ERI

c. PRESSURE FITTINGS



serie **8600**

8600-1 | Socket



Size

14
16
18
20
25
26
32
40
50
63

Features

Working pressure 10 bar

Working temperature from -20°C to +95°C

Thread ISO228 (equivalent to DIN 259 and BS2779)

Opening/closing test 10000 times

CE ACS EN

8600-2 | Male Socket



Size

16x3/8"
16x1/2"
16x3/4"
18x1/2"
18x3/4"
20x1/2"
20x3/4"
25x1/2"
25x3/4"
26x1/2"
26x3/4"
26x1"
32x1"
40x1/2"
50x1 1/2"
63x2"

Features

Working pressure 10 bar

Working temperature from -20°C to +95°C

Thread ISO228 (equivalent to DIN 259 and BS2779)

Opening/closing test 10000 times

CE ACS EN

8600-3 | Female Socket



Size

16x1/2"
16x3/4"
18x1/2"
18x3/4"
20x1/2"
20x3/4"
25x1/2"
25x3/4"
26x1/2"
26x3/4"
26x1"
32x1"
40x1/2"
50x1 1/2"
63x2"

Features

Working pressure 10 bar

Working temperature from -20°C to +95°C

Thread ISO228 (equivalent to DIN 259 and BS2779)

Opening/closing test 10000 times

CE ACS EN

8600-4 | Reduce Socket



Size

16x18
14x20
18x20
16x20
16x25
18x25
20x25
16x26
18x26
20x26
20x32
26x32
26x40
32x40
32x50
40x50
40x63
50x63

Features

Working pressure 10 bar

Working temperature from -20°C to +95°C

Thread ISO228 (equivalent to DIN 259 and BS2779)

Opening/closing test 10000 times

CE ACS EN

8600-5 | Tee



Size

16
18
20
25
26
32
40
50
63

Features

Working pressure 10 bar

Working temperature from -20°C to +95°C

Thread ISO228 (equivalent to DIN 259 and BS2779)

Opening/closing test 10000 times

CE ACS EN

8600-6 | Male tee



Size

16x1/2"
16x3/4"
18x1/2"
18x3/4"
20x1/2"
20x3/4"
25x1/2"
25x3/4"
26x1/2"
26x3/4"
26x1"
32x1"

Features

Working pressure 10 bar

Working temperature from -20°C to +95°C

Thread ISO228 (equivalent to DIN 259 and BS2779)

Opening/closing test 10000 times

CE ACS EN

c. PRESSURE FITTINGS



serie **8600**

8600-7 | Female tee



Size

16x1/2"
16x3/4"
18x1/2"
18x3/4"
20x1/2"
20x3/4"
25x1/2"
25x3/4"
26x1/2"
26x1"
32x1"

CE ACS EN10228

Features

Working pressure 10 bar

Working temperature from -20°C to +95°C

Thread ISO228 (equivalent to DIN 259 and BS2779)

Opening/closing test 10000 times

8600-8 | Equal tee



Size

T16x20x16 T20x16x16
T16x25x16 T20x18x16
T18x16x18 T20x18x18
T18x20x18 T20x20x16
T20x16x16 T25x16x16
T20x16x20 T25x16x20
T20x18x20 T25x18x18
T20x25x20 T25x18x20
T25x16x25 T25x20x16
T25x18x25 T25x20x20
T25x20x25 T25x25x16
T25x32x25 T25x25x20
T32x16x32 T32x20x25
T32x18x32 T32x25x25
T32x20x32 T32x25x20
T32x25x32 T32x32x25
T18x16x16

CE ACS EN10228

Features

Working pressure 10 bar

Working temperature from -20°C to +95°C

Thread ISO228 (equivalent to DIN 259 and BS2779)

Opening/closing test 10000 times

8600-9 | Elbow



Size

16
18
20
25
26
32
40
50
63

CE ACS EN10228

Features

Working pressure 10 bar

Working temperature from -20°C to +95°C

Thread ISO228 (equivalent to DIN 259 and BS2779)

Opening/closing test 10000 times

8600-10 | Female elbow



Size

16x1/2"
16x3/4"
18x1/2"
18x3/4"
20x1/2"
20x3/4"
25x1/2"
25x3/4"
26x1/2"
26x3/4"
26x1"
32x1"
40x1 1/4"
50x1 1/2"
63x2"

CE ACS EN10228

Features

Working pressure 10 bar

Working temperature from -20°C to +95°C

Thread ISO228 (equivalent to DIN 259 and BS2779)

Opening/closing test 10000 times

8600-11 | Male elbow



Size

16x1/2"
16x3/4"
18x1/2"
18x3/4"
20x1/2"
20x3/4"
25x1/2"
25x3/4"
26x1/2"
26x3/4"
26x1"
32x1"
40x1 1/4"
50x1 1/2"
63x2"

CE ACS EN10228

Features

Working pressure 10 bar

Working temperature from -20°C to +95°C

Thread ISO228 (equivalent to DIN 259 and BS2779)

Opening/closing test 10000 times

8600-12 | Seated Elbow



Size

16x1/2"
16x3/4"
18x1/2"
18x3/4"
20x1/2"
20x3/4"
25x1/2"
25x3/4"
26x1/2"
26x3/4"

CE ACS EN10228

Features

Working pressure 10 bar

Working temperature from -20°C to +95°C

Thread ISO228 (equivalent to DIN 259 and BS2779)

Opening/closing test 10000 times

c. PRESSURE FITTINGS



serie **8600**

8600-13 | Valve



Size

16

20

Features

Working pressure 10 bar

Working temperature from -20°C to +95°C

Thread ISO228 (equivalent to DIN 259 and BS2779)

Opening/closing test 10000 times

CE ACS ENEC

8600-14 | Female Valve



Size

16x1/2"

20x1/2"

Features

Working pressure 10 bar

Working temperature from -20°C to +95°C

Thread ISO228 (equivalent to DIN 259 and BS2779)

Opening/closing test 10000 times

CE ACS ENEC

8600-15 | Male Valve



Size

16x1/2"

20x1/2"

Features

Working pressure 10 bar

Working temperature from -20°C to +95°C

Thread ISO228 (equivalent to DIN 259 and BS2779)

Opening/closing test 10000 times

CE ACS ENEC

8600-16 | Double elbow



Size

16x1/2"

Features

Working pressure 10 bar

Working temperature from -20°C to +95°C

Thread ISO228 (equivalent to DIN 259 and BS2779)

Opening/closing test 10000 times

CE ACS ENEC

8600-17 | Union socket



Size

16x1/2"

16x3/4"

18x1/2"

20x3/4"

25x3/4"

25x1"

26x3/4"

26x1"

32x1"

32x1 1/4"

Features

Working pressure 10 bar

Working temperature from -20°C to +95°C

Thread ISO228 (equivalent to DIN 259 and BS2779)

Opening/closing test 10000 times

CE ACS ENEC

8600-18 | Union elbow



Size

16x1/2"

16x3/4"

18x1/2"

20x3/4"

25x3/4"

25x1"

26x3/4"

26x1"

32x1"

32x1 1/4"

Features

Working pressure 10 bar

Working temperature from -20°C to +95°C

Thread ISO228 (equivalent to DIN 259 and BS2779)

Opening/closing test 10000 times

CE ACS ENEC

c. PRESSURE FITTINGS



serie **8600**

8600-19 | Female union separated



Size
16x1/2"
16x3/4"
18x3/4"
20x1/2"
20x3/4"

Features

Working pressure 10 bar

Working temperature from -20°C to +95°C

Thread ISO228 (equivalent to DIN 259 and BS2779)

Opening/closing test 10000 times

CE ACS ENEC

8600-20 | Male Union separated



Size
16X1/2"X16
18X1/2"X18
20X1/2"X20
20X3/4"X20
25X3/4"X25
25X1"X25
32X1"X32

Features

Working pressure 10 bar

Working temperature from -20°C to +95°C

Thread ISO228 (equivalent to DIN 259 and BS2779)

Opening/closing test 10000 times

CE ACS ENEC

8600-21 | Elbow



Size
16

Features

Working pressure 10 bar

Working temperature from -20°C to +95°C

Thread ISO228 (equivalent to DIN 259 and BS2779)

Opening/closing test 10000 times

CE ACS ENEC

8600-22 | Male elbow with connector



Size
M3/4"x16-2.0
M1/2"x20-2.0
M3/4"x20-2.0
M3/4"x25-2.5
M1"x32-3.0

Features

Working pressure 10 bar

Working temperature from -20°C to +95°C

Thread ISO228 (equivalent to DIN 259 and BS2779)

Opening/closing test 10000 times

CE ACS ENEC

8600-23 | 45° Equal elbow



Size
16-2.0x16-2.0
20-2.0x20-2.0

Features

Working pressure 10 bar

Working temperature from -20°C to +95°C

Thread ISO228 (equivalent to DIN 259 and BS2779)

Opening/closing test 10000 times

CE ACS ENEC

8600-24 | Six cross (left/central/right)



Size
16
18
20
25
32

Features

Working pressure 10 bar

Working temperature from -20°C to +95°C

Thread ISO228 (equivalent to DIN 259 and BS2779)

Opening/closing test 10000 times

CE ACS ENEC

c. PRESSURE FITTINGS



serie **8600**

8600-25 | Valve



Size
16
20

Features	CE ACS ENEC
Working pressure 10 bar	
Working temperature from -20°C to +95°C	
Thread ISO228 (equivalent to DIN 259 and BS2779)	
Opening/closing test 10000 times	

8600-26 | Double Seated Elbow



Size
16x1/2"
20x1/2"

Features	CE ACS ENEC
Working pressure 10 bar	
Working temperature from -20°C to +95°C	
Thread ISO228 (equivalent to DIN 259 and BS2779)	
Opening/closing test 10000 times	

8600-27 | Male Union Socket



Size
16 18
16 18 20
16 18 20 25
16 18 20 25 32

Features	CE ACS ENEC
Working pressure 10 bar	
Working temperature from -20°C to +95°C	
Thread ISO228 (equivalent to DIN 259 and BS2779)	
Opening/closing test 10000 times	

860



Size
16x1/2"
20x1/2"

Features	CE ACS ENEC
Working pressure 10 bar	
Working temperature from -20°C to +95°C	
Thread ISO228 (equivalent to DIN 259 and BS2779)	
Opening/closing test 10000 times	



types A



types B



types C



types D

d. PPSU FITTINGS



serie **8700**

8700-1 | Socket



Size
16
20
25
32

Features

CE ACS EN

Working pressure 10 bar

Working temperature from -20°C to +95°C

Thread ISO228 (equivalent to DIN 259 and BS2779)

Opening/closing test 10000 times

8700-2 | Reduce socket



Size
20X16
25X20
32X25

Features

CE ACS EN

Working pressure 10 bar

Working temperature from -20°C to +95°C

Thread ISO228 (equivalent to DIN 259 and BS2779)

Opening/closing test 10000 times

8700-3 | Tee



Size
16
20
25
32

Features

CE ACS EN

Working pressure 10 bar

Working temperature from -20°C to +95°C

Thread ISO228 (equivalent to DIN 259 and BS2779)

Opening/closing test 10000 times

8700-4 | Reduce tee



Size
20x16x16
20x16x20
20x20x16
25x16x25
25x20x25
25x25x16
25x25x20
32x20x32
32x25x25
32x25x32

Features

CE ACS EN

Working pressure 10 bar

Working temperature from -20°C to +95°C

Thread ISO228 (equivalent to DIN 259 and BS2779)

Opening/closing test 10000 times

8700-5 | Elbow



Size
16
20
25
32

Features

CE ACS EN

Working pressure 10 bar

Working temperature from -20°C to +95°C

Thread ISO228 (equivalent to DIN 259 and BS2779)

Opening/closing test 10000 times

8700-6 | Ring



Size
16
20
25
32

Features

CE ACS EN

Working pressure 10 bar

Working temperature from -20°C to +95°C

Thread ISO228 (equivalent to DIN 259 and BS2779)

Opening/closing test 10000 times

e. SLIDING SLEEVE FITTINGS



serie **8701**

8701-1 | Socket



Size

16
20
25
32

Features

Working pressure 10 bar

Working temperature from -20°C to +95°C

Thread ISO228 (equivalent to DIN 259 and BS2779)

Opening/closing test 10000 times

CE ACS ENEC

8701-2 | Male socket



Size

3/8"x16
1/2"x16
1/2"x20
3/4"x16
3/4"x20
3/4"x25
3/4"x32
1"x25
1"x32

Features

Working pressure 10 bar

Working temperature from -20°C to +95°C

Thread ISO228 (equivalent to DIN 259 and BS2779)

Opening/closing test 10000 times

CE ACS ENEC

8701-3 | Female socket



Size

1/2"x16
1/2"x20
3/4"x16
3/4"x20
3/4"x25
1"x32

Features

Working pressure 10 bar

Working temperature from -20°C to +95°C

Thread ISO228 (equivalent to DIN 259 and BS2779)

Opening/closing test 10000 times

CE ACS ENEC

8701-4 | Reduce socket



Size

16x20
16x25
20x25
25x32

Features

Working pressure 10 bar

Working temperature from -20°C to +95°C

Thread ISO228 (equivalent to DIN 259 and BS2779)

Opening/closing test 10000 times

CE ACS ENEC

8701-5 | Tee



Size

16
20
25
32

Features

Working pressure 10 bar

Working temperature from -20°C to +95°C

Thread ISO228 (equivalent to DIN 259 and BS2779)

Opening/closing test 10000 times

CE ACS ENEC

8701-6 | Female tee



Size

16x1/2"x16
20x1/2"x20
20x3/4"x20
25x3/4"x25
32x1"x32

Features

Working pressure 10 bar

Working temperature from -20°C to +95°C

Thread ISO228 (equivalent to DIN 259 and BS2779)

Opening/closing test 10000 times

CE ACS ENEC

e. SLIDING SLEEVE FITTINGS



serie **8701**

8701-7 | Male tee



Size
16X1/2"x16
20X1/2"x20
20X3/4"x20
25X3/4"x25
25X1"x25
32X1"x32

Features

Working pressure 10 bar

Working temperature from -20°C to +95°C

Thread ISO228 (equivalent to DIN 259 and BS2779)

Opening/closing test 10000 times

CE ACS EN

8701-8 | Reduce tee



Size
16x20x16
20x16x16
20x16x20
20x20x16
20x25x20
25x16x16
25x16x20
25x16x25
25x20x16
25x20x20
25x20x25
25x25x16
25x25x20
32x16x32
32x20x25
32x20x32
32x25x25
32x25x32

Features

Working pressure 10 bar

Working temperature from -20°C to +95°C

Thread ISO228 (equivalent to DIN 259 and BS2779)

Opening/closing test 10000 times

CE ACS EN

8701-9 | Elbow



Size
16x16
20x20
25x25
32x32

Features

Working pressure 10 bar

Working temperature from -20°C to +95°C

Thread ISO228 (equivalent to DIN 259 and BS2779)

Opening/closing test 10000 times

CE ACS EN

8701-10 | Male elbow



Size
1/2"x16
1/2"x20
3/4"x20
3/4"x25
1"x32

Features

Working pressure 10 bar

Working temperature from -20°C to +95°C

Thread ISO228 (equivalent to DIN 259 and BS2779)

Opening/closing test 10000 times

CE ACS EN

8701-11 | Female elbow



Size
1/2"x16
1/2"x20
3/4"x16
3/4"x20
3/4"x25
1"x25
1"x32

Features

Working pressure 10 bar

Working temperature from -20°C to +95°C

Thread ISO228 (equivalent to DIN 259 and BS2779)

Opening/closing test 10000 times

CE ACS EN

8701-12 | Steated elbow



Size
3/8"x16
1/2"x16
1/2"x20
3/4"x20
3/4"x25

Features

Working pressure 10 bar

Working temperature from -20°C to +95°C

Thread ISO228 (equivalent to DIN 259 and BS2779)

Opening/closing test 10000 times

CE ACS EN

e. SLIDING SLEEVE FITTINGS



serie **8701**

8701-13 | Double steated elbow



Size
16x1/2"x16
20x1/2"x16

Features	CE ACS ENEC
Working pressure	10 bar
Working temperature	from -20°C to +95°C
Thread	ISO228 (equivalent to DIN 259 and BS2779)
Opening/closing test	10000 times

8701-14 | Socket union



Size
1/2"x16
1/2"x20
3/4"x16
3/4"x20
3/4"x25
1"x25
1"x32

Features	CE ACS ENEC
Working pressure	10 bar
Working temperature	from -20°C to +95°C
Thread	ISO228 (equivalent to DIN 259 and BS2779)
Opening/closing test	10000 times

8701-15 | Straight female socket



Size
16

Features	CE ACS ENEC
Working pressure	10 bar
Working temperature	from -20°C to +95°C
Thread	ISO228 (equivalent to DIN 259 and BS2779)
Opening/closing test	10000 times

8701-16 | Elbow 45°



Size
16
20
25
32

Features	CE ACS ENEC
Working pressure	10 bar
Working temperature	from -20°C to +95°C
Thread	ISO228 (equivalent to DIN 259 and BS2779)
Opening/closing test	10000 times

8701-17 | Ring



Size
16
20
25
32

Features	CE ACS ENEC
Working pressure	10 bar
Working temperature	from -20°C to +95°C
Thread	ISO228 (equivalent to DIN 259 and BS2779)
Opening/closing test	10000 times

8701-18 | Steam



Size
16x15
20x15
16x15
20x15

Features	CE ACS ENEC
Working pressure	10 bar
Working temperature	from -20°C to +95°C
Thread	ISO228 (equivalent to DIN 259 and BS2779)
Opening/closing test	10000 times

e. SLIDING SLEEVE FITTINGS



serie **8701**

8701-19 | Steam



Size

16x15x16
16x15x20
20x15x16
20x15x20
20x15x25
25x15x20
25x15x25

Features

Working pressure 10 bar

Working temperature from -20°C to +95°C

Thread ISO228 (equivalent to DIN 259 and BS2779)

Opening/closing test 10000 times

CE ACS ERI

8701-20 | 6 WAY



Size

16X16X16
20X20X20
25X25X25
32X32X32

Features

Working pressure 10 bar

Working temperature from -20°C to +95°C

Thread ISO228 (equivalent to DIN 259 and BS2779)

Opening/closing test 10000 times

CE ACS ERI

8701-21 | Tools



Size

16 20
16 20 25
16 20 25 32

Features

Working pressure 10 bar

Working temperature from -20°C to +95°C

Thread ISO228 (equivalent to DIN 259 and BS2779)

Opening/closing test 10000 times

CE ACS ERI

8701-22 | Tools



Size

16 20
25 32

Features

Working pressure 10 bar

Working temperature from -20°C to +95°C

Thread ISO228 (equivalent to DIN 259 and BS2779)

Opening/closing test 10000 times

CE ACS ERI

8701-23 | Tools



Size

16 20
16 20 25
16 20 25 32

Features

Working pressure 10 bar

Working temperature from -20°C to +95°C

Thread ISO228 (equivalent to DIN 259 and BS2779)

Opening/closing test 10000 times

CE ACS ERI

f. COPPER PIPE FITTINGS



serie **8800**

8800-1 | Female elbow



Size
12x3/8"
12x1/2"
14x3/8"
14x1/2"
15x3/8"
15x1/2"
16x1/2"
16x3/4"
18x1/2"
18x3/4"
22x1/2"
22x3/4"
22x1"
28x3/4"
28x1"
28x1 1/4"
32x1 1/4"
42x1 1/2"
54x2"

CE ACS ERI

Features

Working pressure 10 bar

Working temperature from -20°C to +95°C

Thread ISO228 (equivalent to DIN 259 and BS2779)

Opening/closing test 10000 times

8800-2 | Male elbow



Size
12x3/8"
12x1/2"
14x3/8"
14x1/2"
15x3/8"
15x1/2"
16x1/2"
16x3/4"
18x1/2"
18x3/4"
22x1/2"
22x3/4"
22x1"
28x3/4"
28x1"
28x1 1/4"
32x1 1/4"
42x1 1/2"
54x2"

CE ACS ERI

Features

Working pressure 10 bar

Working temperature from -20°C to +95°C

Thread ISO228 (equivalent to DIN 259 and BS2779)

Opening/closing test 10000 times

8800-3 | Union elbow



Size
12x3/8"
14x1/2"
15x1/2"
16x1/2"
18x1/2"
18x3/4"
22x3/4"
28x1"
35x1 1/4"

CE ACS ERI

Features

Working pressure 10 bar

Working temperature from -20°C to +95°C

Thread ISO228 (equivalent to DIN 259 and BS2779)

Opening/closing test 10000 times

8800-4 | Female tee



Size
12x3/8"
12x1/2"
14x1/2"
15x3/8"
15x1/2"
16x1/2"
18x1/2"
18x3/4"
22x1/2"
22x3/4"
22x1"
28x1/2"
28x3/4"
28x1"
35x1 1/4"
42x1 1/2"
54x2"

CE ACS ERI

Features

Working pressure 10 bar

Working temperature from -20°C to +95°C

Thread ISO228 (equivalent to DIN 259 and BS2779)

Opening/closing test 10000 times

8800-5 | Male socket



Size	Size
10x3/8"	22x7/8"
12x3/8"	22x1"
12x1/2"	28x1/2"
14x3/8"	28x3/4"
14x1/2"	28x1"
14x3/4"	28x1 1/4"
15x3/8"	35x1 1/4"
15x1/2"	35x1 1/2"
15x3/4"	42x1 1/4"
16x1/2"	42x1 1/2"
16x3/4"	54x2"
18x1/2"	64x2 1/2"
18x3/4"	67x2 1/2"
22x1/2"	79.4x3"
22x3/4"	104x4"

CE ACS ERI

Features

Working pressure 10 bar

Working temperature from -20°C to +95°C

Thread ISO228 (equivalent to DIN 259 and BS2779)

Opening/closing test 10000 times

8800-6 | Female socket



Size
12x3/8"
12x1/2"
14x3/8"
14x1/2"
15x3/8"
15x1/2"
16x1/2"
16x3/4"
18x1/2"
18x3/4"
22x1/2"
22x3/4"
22x1"
28x3/4"
28x1"
28x1 1/4"
32x1 1/4"
42x1 1/2"
54x2"

CE ACS ERI

Features

Working pressure 10 bar

Working temperature from -20°C to +95°C

Thread ISO228 (equivalent to DIN 259 and BS2779)

Opening/closing test 10000 times

f. COPPER PIPE FITTINGS



serie **8800**

8800-7 | Cross tee



Size

15
18
22
28
35
42
54

Features

Working pressure 10 bar

Working temperature from -20°C to +95°C

Thread ISO228 (equivalent to DIN 259 and BS2779)

Opening/closing test 10000 times

CE ACS ERI

8800-8 | Cap



Size

12
14
15
16
18
22
28
35
42
54

Features

Working pressure 10 bar

Working temperature from -20°C to +95°C

Thread ISO228 (equivalent to DIN 259 and BS2779)

Opening/closing test 10000 times

CE ACS ERI

8800-9 | Union



Size

12
14
15
16
18
22
28
35
42
54

Features

Working pressure 10 bar

Working temperature from -20°C to +95°C

Thread ISO228 (equivalent to DIN 259 and BS2779)

Opening/closing test 10000 times

CE ACS ERI

8800-10 | Female union



Size

12x3/8"
14x3/8"
14x1/2"
15x1/2"
16x1/2"
18x1/2"
18x3/4"
22x3/4"
22x1"
28x1"
28x1 1/4"
32x1 1/4"
42x1 1/2"
54x2"

Features

Working pressure 10 bar

Working temperature from -20°C to +95°C

Thread ISO228 (equivalent to DIN 259 and BS2779)

Opening/closing test 10000 times

CE ACS ERI

8800-11 | Male Union



Size

12x3/8"
12x1/2"
14x3/8"
14x1/2"
14x3/4"
15x1/2"
16x1/2"
16x3/4"
18x1/2"
18x3/4"
22x1/2"
22x3/4"
22x1"
28x1"
28x1 1/4"
32x1 1/4"
35x1 1/4"
42x1 1/2"
54x2"

Features

Working pressure 10 bar

Working temperature from -20°C to +95°C

Thread ISO228 (equivalent to DIN 259 and BS2779)

Opening/closing test 10000 times

CE ACS ERI

8800-12 | Seated elbow mold 1



Size

15x1/2"
18x1/2"
18x3/4"
22x1/2"
22x3/4"
28x1"

Features

Working pressure 10 bar

Working temperature from -20°C to +95°C

Thread ISO228 (equivalent to DIN 259 and BS2779)

Opening/closing test 10000 times

CE ACS ERI

f. COPPER PIPE FITTINGS



serie **8800**

8800-13 | Seated elbow mold 2



Size
12x1/2"
14x1/2"
15x1/2"
16x1/2"

Features

Working pressure 10 bar

Working temperature from -20°C to +95°C

Thread ISO228 (equivalent to DIN 259 and BS2779)

Opening/closing test 10000 times

CE ACS EN

8800-14 | Elbow union



Size	Size
10x3/8"	22x1/2"
12x3/8"	22x3/4"
12x1/2"	22x7/8"
14x3/8"	22x1"
14x1/2"	28x1/2"
15x3/8"	28x3/4"
15x1/2"	28x7/8"
15x3/4"	28x1"
16x1/2"	12x20
16x3/4"	14x20
18x1/2"	15x20
18x3/4"	16x20
18x7/8"	18x20

Features

Working pressure 10 bar

Working temperature from -20°C to +95°C

Thread ISO228 (equivalent to DIN 259 and BS2779)

Opening/closing test 10000 times

CE ACS EN

8800-15 | Socket union



Size	Size
10x3/8"	22x1/2"
12x3/8"	22x3/4"
12x1/2"	22x7/8"
14x3/8"	22x1"
14x1/2"	28x1/2"
15x3/8"	28x3/4"
15x1/2"	28x7/8"
15x3/4"	28x1"
16x1/2"	12x20
16x3/4"	14x20
18x1/2"	15x20
18x3/4"	16x20
18x7/8"	18x20

Features

Working pressure 10 bar

Working temperature from -20°C to +95°C

Thread ISO228 (equivalent to DIN 259 and BS2779)

Opening/closing test 10000 times

CE ACS EN

8800-16 | Bridge



Size
15
18
22

Features

Working pressure 10 bar

Working temperature from -20°C to +95°C

Thread ISO228 (equivalent to DIN 259 and BS2779)

Opening/closing test 10000 times

CE ACS EN

f. COPPER PIPE FITTINGS



serie **8801**

8801-1 | Socket



Size
8x8
10x10
12x12
14x14
15x15
16x16
18x18
22x22
28x28
35x35
42x42
54x54
15x15x82mm
22x22x82mm

Features

Working pressure 10 bar

Working temperature from -20°C to +95°C

Thread ISO228 (equivalent to DIN 259 and BS2779)

Opening/closing test 10000 times

CE ACS C FRI

8801-2 | Reducing socket



Size
10x8
10x14
12x8
12x10
12x14
12x15
14x16
15x8
15x10
15x12
18x15
22x15
22x18
28x15
28x22

Features

Working pressure 10 bar

Working temperature from -20°C to +95°C

Thread ISO228 (equivalent to DIN 259 and BS2779)

Opening/closing test 10000 times

CE ACS C FRI

8801-3 | Female socket



Size	Size
8x1/4" F	15x1" F
8x3/8" F	16x1/2" F
10x1/4" F	16x3/4" F
10x3/8" F	18x1/2" F
10x1/2" F	18x3/4" F
12x3/8" F	22x1/2" F
12x1/2" F	22x3/4" F
14x3/8" F	22x1" F
14x1/2" F	28x3/4" F
15x1/4" F	28x1" F
15x3/8" F	35x1 1/4" F
15x1/2" F	42x1 1/2" F
15x3/4" F	54x2" F

Features

Working pressure 10 bar

Working temperature from -20°C to +95°C

Thread ISO228 (equivalent to DIN 259 and BS2779)

Opening/closing test 10000 times

CE ACS C FRI

8801-4 | Male socket



Size	Size
8x1/8"M	15x3/4"M
8x1/4"M	16x1/2"M
8x3/8"M	16x3/4"M
8x1/2"M	18x1/2"M
10x1/4"M	18x3/4"M
10x3/8"M	22x1/2"M
10x1/2"M	22x3/4"M
12x3/8"M	22x1"M
12x1/2"M	22x1 1/4"M
14x3/8"M	28x3/4"M
14x1/2"M	28x1"M
14x3/4"M	35x1 1/4"M
15x1/4"M	42x1 1/2"M
15x3/8"M	54x2"M
15x1/2"M	

Features

Working pressure 10 bar

Working temperature from -20°C to +95°C

Thread ISO228 (equivalent to DIN 259 and BS2779)

Opening/closing test 10000 times

CE ACS C FRI

8801-5 | Elbow



Size
8x8
10x10
12x12
14x14
15x15
16x16
18x18
22x22
28x28
35x35
42x42
54x54

Features

Working pressure 10 bar

Working temperature from -20°C to +95°C

Thread ISO228 (equivalent to DIN 259 and BS2779)

Opening/closing test 10000 times

CE ACS C FRI

8801-6 | Reduce elbow



Size
15x22
15x28
22x28

Features

Working pressure 10 bar

Working temperature from -20°C to +95°C

Thread ISO228 (equivalent to DIN 259 and BS2779)

Opening/closing test 10000 times

CE ACS C FRI

f. COPPER PIPE FITTINGS



serie **8801**

8801-7 | Female elbow



Size
8x1/4"F
10x3/8"F
10x1/2"F
12x1/2"F
12x3/8"F
14x1/2"F
14x3/8"F
15x1/2"F
15x3/4"F
16x1/2"F
16x3/4"F
18x1/2"F
18x3/4"F
22x1/2"F
22x3/4"F
22x1"F
28x1"F
35x1 1/4"F
42x1 1/2"F
54x2"F

CE ACS C FRI

Features

Working pressure 10 bar

Working temperature from -20°C to +95°C

Thread ISO228 (equivalent to DIN 259 and BS2779)

Opening/closing test 10000 times

8801-8 | Male elbow



Size
8x1/4"M
10x3/8"M
10x1/2"M
12x1/2"M
12x3/8"M
14x1/2"M
14x3/8"M
15x1/2"M
15x3/4"M
16x1/2"M
16x3/4"M
18x1/2"M
18x3/4"M
22x1/2"M
22x3/4"M
22x1"M
28x1"M
35x1 1/4"M
42x1 1/2"M
54x2"M

CE ACS C FRI

Features

Working pressure 10 bar

Working temperature from -20°C to +95°C

Thread ISO228 (equivalent to DIN 259 and BS2779)

Opening/closing test 10000 times

8801-9 | Tee



Size
8x8x8
10x10x10
12x12x12
14x14x14
15x15x15
16x16x16
18x18x18
22x22x22
28x28x28
35x35x35
42x42x42
54x54x54

CE ACS C FRI

Features

Working pressure 10 bar

Working temperature from -20°C to +95°C

Thread ISO228 (equivalent to DIN 259 and BS2779)

Opening/closing test 10000 times

8801-10 | Reducing tee



Size	Size
15x15x22	35x35x15
18x18x15	35x35x22
18x15x18	35x35x28
22x15x15	42x42x15
22x15x22	42x42x22
22x22x15	42x42x28
22x22x18	42x42x35
22x28x15	54x54x15
28x28x15	54x54x22
28x15x28	54x54x28
28x22x22	54x54x35
28x28x22	54x54x42
28x22x28	

CE ACS C FRI

Features

Working pressure 10 bar

Working temperature from -20°C to +95°C

Thread ISO228 (equivalent to DIN 259 and BS2779)

Opening/closing test 10000 times

8801-11 | Female tee



Size
12x12x1/2"F
12x12x3/4"F
14x14x1/2"F
14x14x3/4"F
15x15x1/2"F
15x15x3/4"F
16x16x1/2"F
16x16x2/4"F
18x18x1/2"F
18x18x3/4"F
22x22x1/2"F
22x22x3/4"F
28x28x1/2"F
28x28x3/4"F
28x28x1"F

CE ACS C FRI

Features

Working pressure 10 bar

Working temperature from -20°C to +95°C

Thread ISO228 (equivalent to DIN 259 and BS2779)

Opening/closing test 10000 times

8801-12 | Male tee



Size
12x12x1/2"F
12x12x3/4"F
14x14x1/2"F
14x14x3/4"F
15x15x1/2"F
15x15x3/4"F
16x16x1/2"F
16x16x2/4"F
18x18x1/2"F
18x18x3/4"F
22x22x1/2"F
22x22x3/4"F
28x28x1/2"F
28x28x3/4"F
28x28x1"F

CE ACS C FRI

Features

Working pressure 10 bar

Working temperature from -20°C to +95°C

Thread ISO228 (equivalent to DIN 259 and BS2779)

Opening/closing test 10000 times

f. COPPER PIPE FITTINGS



serie **8801**

8801-13 | Seated elbow



Size

12x1/2"F
14x1/2"F
15x1/2"F
16x1/2"F
18x1/2"F
18x3/4"F
22x1/2"F
22x3/4"F

Features

Working pressure 10 bar
Working temperature from -20°C to +95°C
Thread ISO228 (equivalent to DIN 259 and BS2779)
Opening/closing test 10000 times

CE ACS EAC

8801-14 | Tank connector



Size

15
22
28
35
42
54

Features

Working pressure 10 bar
Working temperature from -20°C to +95°C
Thread ISO228 (equivalent to DIN 259 and BS2779)
Opening/closing test 10000 times

CE ACS EAC

8801-15 | End cap



Size

8
10
12
14
15
16
18
22
28
35
54

Features

Working pressure 10 bar
Working temperature from -20°C to +95°C
Thread ISO228 (equivalent to DIN 259 and BS2779)
Opening/closing test 10000 times

CE ACS EAC

8801-16 | Socket union



Size

15x1/2"F
15x3/4"F
22x3/4"F

Features

Working pressure 10 bar
Working temperature from -20°C to +95°C
Thread ISO228 (equivalent to DIN 259 and BS2779)
Opening/closing test 10000 times

CE ACS EAC

8801-17 | Elbow union



Size

15x1/2"F
22x3/4"F

Features

Working pressure 10 bar
Working temperature from -20°C to +95°C
Thread ISO228 (equivalent to DIN 259 and BS2779)
Opening/closing test 10000 times

CE ACS EAC

8801-18 | Crossover bridge



Size

15
18
22

Features

Working pressure 10 bar
Working temperature from -20°C to +95°C
Thread ISO228 (equivalent to DIN 259 and BS2779)
Opening/closing test 10000 times

CE ACS EAC

f. COPPER PIPE FITTINGS



serie **8801**

8801-19 | Reduced Piece



Size
15x8
15x10
22x15
28x15
28x22
35x22
35x28

Features	CE ACS ENEC
Working pressure 10 bar	
Working temperature from -20°C to +95°C	
Thread ISO228 (equivalent to DIN 259 and BS2779)	
Opening/closing test 10000 times	

8801-20 | 3 Part Reduced Set



Size
10
12
14
15
16
18
22

Features	CE ACS ENEC
Working pressure 10 bar	
Working temperature from -20°C to +95°C	
Thread ISO228 (equivalent to DIN 259 and BS2779)	
Opening/closing test 10000 times	

8801-21 | Water Tank Connector



Size
15x1/2"
22x3/4"
28x1"
35x 1 1/4"
42x1 1/2"
54x2"

Features	CE ACS ENEC
Working pressure 10 bar	
Working temperature from -20°C to +95°C	
Thread ISO228 (equivalent to DIN 259 and BS2779)	
Opening/closing test 10000 times	

8801-22 | Degree Elbow 45°



Size
15x45°
22x45°
28x45°

Features	CE ACS ENEC
Working pressure 10 bar	
Working temperature from -20°C to +95°C	
Thread ISO228 (equivalent to DIN 259 and BS2779)	
Opening/closing test 10000 times	

8801-23 | Nut



Size
10
12
14
15
16
18
22

Features	CE ACS ENEC
Working pressure 10 bar	
Working temperature from -20°C to +95°C	
Thread ISO228 (equivalent to DIN 259 and BS2779)	
Opening/closing test 10000 times	

8801-24 | Ring



Size
10
12
14
15
16
18
22

Features	CE ACS ENEC
Working pressure 10 bar	
Working temperature from -20°C to +95°C	
Thread ISO228 (equivalent to DIN 259 and BS2779)	
Opening/closing test 10000 times	



a. HAVC-RADIATOR VALVES



serie **9100**

9100-1 | Angle radiator valve



Size

1/2"

3/4"

Features

ISO CE ACS EN

Working pressure 10 bar (145 psi)

Working temperature from 0°C to +120°C (from 32 °F to 248 °F)

Thread ISO228(equivalent to DIN 259 and BS2779)

9100-2 | Angle radiator valve, without handle



Size

1/2"

3/4"

Features

ISO CE ACS EN

Working pressure 10 bar (145 psi)

Working temperature from 0°C to +120°C (from 32 °F to 248 °F)

Thread ISO228(equivalent to DIN 259 and BS2779)

9100-3 | Straight radiator valve



Size

1/2"

3/4"

Features

ISO CE ACS EN

Working pressure 10 bar (145 psi)

Working temperature from 0°C to +120°C (from 32 °F to 248 °F)

Thread ISO228(equivalent to DIN 259 and BS2779)

9100-4 | Straight radiator valve, without handle



Size

1/2"

3/4"

Features

ISO CE ACS EN

Working pressure 10 bar (145 psi)

Working temperature from 0°C to +120°C (from 32 °F to 248 °F)

Thread ISO228(equivalent to DIN 259 and BS2779)

9100-5 | Radiator valve polished chrome-plated



Size

16x1/2"



Features

ISO CE ACS EN

Working pressure 10 bar (145 psi)

Working temperature from 0°C to +120°C (from 32 °F to 248 °F)

Thread ISO228(equivalent to DIN 259 and BS2779)

9100-6 | Radiator valve polished chrome-plated, without handle



Size

16x1/2"



Features

ISO CE ACS EN

Working pressure 10 bar (145 psi)

Working temperature from 0°C to +120°C (from 32 °F to 248 °F)

Thread ISO228(equivalent to DIN 259 and BS2779)

a. HAVC-RADIATOR VALVES

9100-7 | Radiator angle valve with ppr



Size
20x1/2"
25x3/4"

Features ISO CE ACS ERI
Working pressure 10 bar (145 psi)
Working temperature from 0°C to +120°C (from 32 °F to 248 °F)
Thread ISO228(equivalent to DIN 259 and BS2779)

9100-8 | Radiator straight valve with ppr



Size
20x1/2"
25x3/4"

Features ISO CE ACS ERI
Working pressure 10 bar (145 psi)
Working temperature from 0°C to +120°C (from 32 °F to 248 °F)
Thread ISO228(equivalent to DIN 259 and BS2779)

9100-9 | Radiator angle valve



Size
16x1/2"
20x3/4"

Features ISO CE ACS ERI
Working pressure 10 bar (145 psi)
Working temperature from 0°C to +120°C (from 32 °F to 248 °F)
Thread ISO228(equivalent to DIN 259 and BS2779)

9100-10 | Radiator straight valve



Size
16x1/2"
20x3/4"

Features ISO CE ACS ERI
Working pressure 10 bar (145 psi)
Working temperature from 0°C to +120°C (from 32 °F to 248 °F)
Thread ISO228(equivalent to DIN 259 and BS2779)

9100-11 | Radiator valve polished chrome-plated



Size
1/2"x1/2"

Features ISO CE ACS ERI
Working pressure 10 bar (145 psi)
Working temperature from 0°C to +120°C (from 32 °F to 248 °F)
Thread ISO228(equivalent to DIN 259 and BS2779)

9100-12 | Radiator valve polished chrome-plated, without handle



Size
1/2"x1/2"

Features ISO CE ACS ERI
Working pressure 10 bar (145 psi)
Working temperature from 0°C to +120°C (from 32 °F to 248 °F)
Thread ISO228(equivalent to DIN 259 and BS2779)

a. HAVC-RADIATOR VALVES



serie **9100**

9100-13 | Radiator valve polished chrome-plated



Size
M1/2"x16-2.0

Features	ISO	CE	ACS	ENI
Working pressure 10 bar (145 psi)				
Working temperature from 0°C to +120°C (from 32 °F to 248 °F)				
Thread ISO228(equivalent to DIN 259 and BS2779)				

9100-14 | Radiator valve polished chrome-plated, without handle



Size
M1/2"x16-2.0

Features	ISO	CE	ACS	ENI
Working pressure 10 bar (145 psi)				
Working temperature from 0°C to +120°C (from 32 °F to 248 °F)				
Thread ISO228(equivalent to DIN 259 and BS2779)				

9100-15 | Angle H-valve



Size
F3/4"xM1/2"
F1"xM3/4"

Features	ISO	CE	ACS	ENI
Working pressure 10 bar (145 psi)				
Working temperature from 0°C to +120°C (from 32 °F to 248 °F)				
Thread ISO228(equivalent to DIN 259 and BS2779)				

9100-16 | Self-Sealing Extension



Size
1/2"
3/4"

Features	ISO	CE	ACS	ENI
Working pressure 10 bar (145 psi)				
Working temperature from 0°C to +120°C (from 32 °F to 248 °F)				
Thread ISO228(equivalent to DIN 259 and BS2779)				

9100-17 | Angle H-valve



Size
F3/4"xM3/4"

Features	ISO	CE	ACS	ENI
Working pressure 10 bar (145 psi)				
Working temperature from 0°C to +120°C (from 32 °F to 248 °F)				
Thread ISO228(equivalent to DIN 259 and BS2779)				

9100-18 | Angle H-valve



Size
M1/2"xM3/4"

Features	ISO	CE	ACS	ENI
Working pressure 10 bar (145 psi)				
Working temperature from 0°C to +120°C (from 32 °F to 248 °F)				
Thread ISO228(equivalent to DIN 259 and BS2779)				

a. HAVC-RADIATOR VALVES



serie **9100**

9100-19 | Radiator valve polished chrome-plated



Size

1/2"

3/4"

1"

Features

Working pressure 10 bar (145 psi)

Working temperature from 0°C to +120°C (from 32 °F to 248 °F)

Thread ISO228(equivalent to DIN 259 and BS2779)

ISO CE ACS EBC

9100-20 | Radiator valve polished chrome-plated, without handle



Size

1/2"

Features

Working pressure 10 bar (145 psi)

Working temperature from 0°C to +120°C (from 32 °F to 248 °F)

Thread ISO228(equivalent to DIN 259 and BS2779)

ISO CE ACS EBC

9100-21 | Straight two-pipe valve



Size

F3/4"xM3/4"

Features

Working pressure 10 bar (145 psi)

Working temperature from 0°C to +120°C (from 32 °F to 248 °F)

Thread ISO228(equivalent to DIN 259 and BS2779)

ISO CE ACS EBC

9100-22 | Straight two-pipe valve, with adapter



Size

1/2"x16mm"

Features

Working pressure 10 bar (145 psi)

Working temperature from 0°C to +120°C (from 32 °F to 248 °F)

Thread ISO228(equivalent to DIN 259 and BS2779)

ISO CE ACS EBC

a. HAVC-RADIATOR VALVES



serie **9100**

9100-23 | Actuator



Size
operating temperature
-20°C-50°C

Features	ISO	CE	ACS	ENI
Working pressure 10 bar (145 psi)				
Working temperature from 0°C to +120°C (from 32 °F to 248 °F)				
Thread ISO228(equivalent to DIN 259 and BS2779)				

9100-24 | Actuator



Size
operating temperature
-20°C-50°C

Features	ISO	CE	ACS	ENI
Working pressure 10 bar (145 psi)				
Working temperature from 0°C to +120°C (from 32 °F to 248 °F)				
Thread ISO228(equivalent to DIN 259 and BS2779)				

9100-25 | Actuator



Size
operating temperature
-20°C-50°C

Features	ISO	CE	ACS	ENI
Working pressure 10 bar (145 psi)				
Working temperature from 0°C to +120°C (from 32 °F to 248 °F)				
Thread ISO228(equivalent to DIN 259 and BS2779)				

9100-26 | Actuator



Size
operating temperature
-20°C-50°C

Features	ISO	CE	ACS	ENI
Working pressure 10 bar (145 psi)				
Working temperature from 0°C to +120°C (from 32 °F to 248 °F)				
Thread ISO228(equivalent to DIN 259 and BS2779)				

9100-27 | Actuator



Size
operating temperature
-20°C-50°C

Features	ISO	CE	ACS	ENI
Working pressure 10 bar (145 psi)				
Working temperature from 0°C to +120°C (from 32 °F to 248 °F)				
Thread ISO228(equivalent to DIN 259 and BS2779)				

9100-28 | Actuator



Size
operating temperature
-20°C-50°C

Features	ISO	CE	ACS	ENI
Working pressure 10 bar (145 psi)				
Working temperature from 0°C to +120°C (from 32 °F to 248 °F)				
Thread ISO228(equivalent to DIN 259 and BS2779)				

a. HAVC-RADIATOR VALVES



serie **9100**

9100-29 | Actuator

Size
operating temperature
-20°C-50°C



Features

ISO CE ACS ENEC

Working pressure 10 bar (145 psi)

Working temperature from 0°C to +120°C (from 32 °F to 248 °F)

Thread ISO228(equivalent to DIN 259 and BS2779)

9100-30 | Actuator

Size
operating temperature
-20°C-50°C



Features

ISO CE ACS ENEC

Working pressure 10 bar (145 psi)

Working temperature from 0°C to +120°C (from 32 °F to 248 °F)

Thread ISO228(equivalent to DIN 259 and BS2779)

9100-31 | Actuator

Size
operating temperature
-20°C-50°C



Features

ISO CE ACS ENEC

Working pressure 10 bar (145 psi)

Working temperature from 0°C to +120°C (from 32 °F to 248 °F)

Thread ISO228(equivalent to DIN 259 and BS2779)

9100-32 | Actuator

Size
operating temperature
-20°C-50°C



Features

ISO CE ACS ENEC

Working pressure 10 bar (145 psi)

Working temperature from 0°C to +120°C (from 32 °F to 248 °F)

Thread ISO228(equivalent to DIN 259 and BS2779)

9100-33 | Actuator

Size
operating temperature
-20°C-50°C



Features

ISO CE ACS ENEC

Working pressure 10 bar (145 psi)

Working temperature from 0°C to +120°C (from 32 °F to 248 °F)

Thread ISO228(equivalent to DIN 259 and BS2779)

9100-34 | Actuator

Size
operating temperature
-20°C-50°C



Features

ISO CE ACS ENEC

Working pressure 10 bar (145 psi)

Working temperature from 0°C to +120°C (from 32 °F to 248 °F)

Thread ISO228(equivalent to DIN 259 and BS2779)

b. HAVC-MANIFOLD



serie **9200**

9200-61 | Prefilter



Size
Outflow
3m³/h

Features	ISO	CE	ACS	ENI
Working pressure 10 bar (145 psi)				
Working temperature from 0°C to +120°C (from 32 °F to 248 °F)				
Thread ISO228(equivalent to DIN 259 and BS2779)				

9200-62 | Prefilter



Size
Outflow
3m³/h

Features	ISO	CE	ACS	ENI
Working pressure 10 bar (145 psi)				
Working temperature from 0°C to +120°C (from 32 °F to 248 °F)				
Thread ISO228(equivalent to DIN 259 and BS2779)				

9200-63 | Prefilter



Size
Outflow
4m³/h

Features	ISO	CE	ACS	ENI
Working pressure 10 bar (145 psi)				
Working temperature from 0°C to +120°C (from 32 °F to 248 °F)				
Thread ISO228(equivalent to DIN 259 and BS2779)				

9200-64 | Prefilter



Size
Outflow
4m³/h

Features	ISO	CE	ACS	ENI
Working pressure 16 bar (232 psi)				
Working temperature from -10°C to +95°C (from 14 °F to 203 °F)				
Thread ISO228 (equivalent to DIN 259 and BS2779)				
Distance between centres 36mm and 1/2"x15				

9200-65 | Prefilter



Size
Outflow
4m³/h

Features	ISO	CE	ACS	ENI
Working pressure 10 bar (145 psi)				
Working temperature from 0°C to +120°C (from 32 °F to 248 °F)				
Thread ISO228(equivalent to DIN 259 and BS2779)				



Size
Outflow
4m³/h

Features	ISO	CE	ACS	ENI
Working pressure 10 bar (145 psi)				
Working temperature from 0°C to +120°C (from 32 °F to 248 °F)				
Thread ISO228(equivalent to DIN 259 and BS2779)				

a. HAVC-RADIATOR VALVES



series **9100**

9100-35 | THERMOSTAT

Size

Set range temperature

5°C-60°C



Features

ISO CE ACS EN

Working pressure 10 bar (145 psi)

Working temperature from 0°C to +120°C (from 32 °F to 248 °F)

Thread ISO228(equivalent to DIN 259 and BS2779)

9100-36 | THERMOSTAT

Size

Set range temperature

5°C-60°C



Features

ISO CE ACS EN

Working pressure 10 bar (145 psi)

Working temperature from 0°C to +120°C (from 32 °F to 248 °F)

Thread ISO228(equivalent to DIN 259 and BS2779)

9100-37 | THERMOSTAT

Size

Set range temperature

5°C-60°C



Features

ISO CE ACS EN

Working pressure 10 bar (145 psi)

Working temperature from 0°C to +120°C (from 32 °F to 248 °F)

Thread ISO228(equivalent to DIN 259 and BS2779)

9100-38 | THERMOSTAT

Size

Set range temperature

5°C-60°C



Features

ISO CE ACS EN

Working pressure 10 bar (145 psi)

Working temperature from 0°C to +120°C (from 32 °F to 248 °F)

Thread ISO228(equivalent to DIN 259 and BS2779)

9100-39 | 7 set

Size

1/2"

3/4"



Features

ISO CE ACS EN

Working pressure 10 bar (145 psi)

Working temperature from 0°C to +120°C (from 32 °F to 248 °F)

Thread ISO228(equivalent to DIN 259 and BS2779)

9100-40 | 11 set

Size

1/2"

3/4"



Features

ISO CE ACS EN

Working pressure 10 bar (145 psi)

Working temperature from 0°C to +120°C (from 32 °F to 248 °F)

Thread ISO228(equivalent to DIN 259 and BS2779)

a. HAVC-RADIATOR VALVES



serie **9100**

9100-41 | 13 set



Size

1/2"

3/4"

Features

Working pressure 10 bar (145 psi)

Working temperature from 0°C to +120°C (from 32 °F to 248 °F)

Thread ISO228(equivalent to DIN 259 and BS2779)

ISO CE ACS EBC

9100-42 | Stent



Size

7.5*165

7.5*170

7.5*175

7.5*180

7.5*188

Features

Working pressure 10 bar (145 psi)

Working temperature from 0°C to +120°C (from 32 °F to 248 °F)

Thread ISO228(equivalent to DIN 259 and BS2779)

ISO CE ACS EBC

9100-43 | stent



Size

75 x48x110

Features

Working pressure 10 bar (145 psi)

Working temperature from 0°C to +120°C (from 32 °F to 248 °F)

Thread ISO228(equivalent to DIN 259 and BS2779)

ISO CE ACS EBC

9100-44 | Stent



Size

M1/2"x16-2.0

Features

Working pressure 10 bar (145 psi)

Working temperature from 0°C to +120°C (from 32 °F to 248 °F)

Thread ISO228(equivalent to DIN 259 and BS2779)

ISO CE ACS EBC

9100-45 | Accessories



Size

S1"xD1"

Features

Working pressure 10 bar (145 psi)

Working temperature from 0°C to +120°C (from 32 °F to 248 °F)

Thread ISO228(equivalent to DIN 259 and BS2779)

ISO CE ACS EBC

9100-46 | Accessories



Size

3/8"

1/2"

3/4"

Features

Working pressure 10 bar (145 psi)

Working temperature from 0°C to +120°C (from 32 °F to 248 °F)

Thread ISO228(equivalent to DIN 259 and BS2779)

ISO CE ACS EBC

a. HAVC-RADIATOR VALVES



serie **9100**

9100-47 | vent valve



Size

1/2"

3/4"

Features

Working pressure 10 bar (145 psi)

Working temperature from 0°C to +120°C (from 32 °F to 248 °F)

Thread ISO228(equivalent to DIN 259 and BS2779)

ISO CE ACS EN

9100-48 | Plug steel



Size

1/2"

3/4"

Features

Working pressure 10 bar (145 psi)

Working temperature from 0°C to +120°C (from 32 °F to 248 °F)

Thread ISO228(equivalent to DIN 259 and BS2779)

ISO CE ACS EN

9100-49 | Handwheel vent valve



Size

1/2"

3/4"

Features

Working pressure 10 bar (145 psi)

Working temperature from 0°C to +120°C (from 32 °F to 248 °F)

Thread ISO228(equivalent to DIN 259 and BS2779)

ISO CE ACS EN

9100-50 | Stent



Size

M1/2"x16-2.0

Features

Working pressure 10 bar (145 psi)

Working temperature from 0°C to +120°C (from 32 °F to 248 °F)

Thread ISO228(equivalent to DIN 259 and BS2779)

ISO CE ACS EN

9100-51 | Gasket



Size

S1"xD1"

Features

Working pressure 10 bar (145 psi)

Working temperature from 0°C to +120°C (from 32 °F to 248 °F)

Thread ISO228(equivalent to DIN 259 and BS2779)

ISO CE ACS EN

9100-52 | Stent



Size

3/8"

1/2"

3/4"

Features

Working pressure 10 bar (145 psi)

Working temperature from 0°C to +120°C (from 32 °F to 248 °F)

Thread ISO228(equivalent to DIN 259 and BS2779)

ISO CE ACS EN

b. HAVC-MANIFOLD



serie **9200**

9200-1

Manifold



Size

3/4"x16

1"x16

1"x20

Features

Working pressure 10 bar (145 psi)

Working temperature from 0°C to +120°C (from 32 °F to 248 °F)

Thread ISO228(equivalent to DIN 259 and BS2779)

ISO CE ACS ENEC

9200-2

Manifold



Size

3/4"x16

1"x16

1"x20

Features

Working pressure 10 bar (145 psi)

Working temperature from 0°C to +120°C (from 32 °F to 248 °F)

Thread ISO228(equivalent to DIN 259 and BS2779)

ISO CE ACS ENEC

9200-4

Forging radiator valve



Size

2way 8way

3way 9way

4way 10way

5way 11way

6way 12way

7way

Features

Working pressure 10 bar (145 psi)

Working temperature from 0°C to +120°C (from 32 °F to 248 °F)

Thread ISO228(equivalent to DIN 259 and BS2779)

ISO CE ACS ENEC

9200-3

Manifold



Size

3/4"x16

1"x16

1"x20

Features

Working pressure 10 bar (145 psi)

Working temperature from 0°C to +120°C (from 32 °F to 248 °F)

Thread ISO228(equivalent to DIN 259 and BS2779)

ISO CE ACS ENEC

9200-5

Manifold
chrome-plated



Size

3/4"x1/2"

1"x1/2"

Features

Working pressure 10 bar (145 psi)

Working temperature from 0°C to +120°C (from 32 °F to 248 °F)

Thread ISO228(equivalent to DIN 259 and BS2779)

ISO CE ACS ENEC

9200-6

Manifold
chrome-plated



Size

3/4"x1/2"

1"x1/2"

Features

Working pressure 10 bar (145 psi)

Working temperature from 0°C to +120°C (from 32 °F to 248 °F)

Thread ISO228(equivalent to DIN 259 and BS2779)

ISO CE ACS ENEC

b. HAVC-MANIFOLD

serie **9200**

9200-7

Profile flowmeter manifolds



Size	Size
2way	8way
3way	9way
4way	10way
5way	11way
6way	12way
7way	

Features

Working pressure 10 bar (145 psi)

Working temperature from 0°C to +120°C (from 32 °F to 248 °F)

Thread ISO228(equivalent to DIN 259 and BS2779)

Size 1"x16 1"x20

ISO CE ACS EN

9200-8

Profile lockshield manifolds



Size	Size
2way	8way
3way	9way
4way	10way
5way	11way
6way	12way
7way	

Features

Working pressure 10 bar (145 psi)

Working temperature from 0°C to +120°C (from 32 °F to 248 °F)

Thread ISO228(equivalent to DIN 259 and BS2779)

Size 1"x16 1"x20

ISO CE ACS EN

9200-9

Profile manual manifold



Size	Size
2way	8way
3way	9way
4way	10way
5way	11way
6way	12way
7way	

Features

Working pressure 10 bar (145 psi)

Working temperature from 0°C to +120°C (from 32 °F to 248 °F)

Thread ISO228(equivalent to DIN 259 and BS2779)

Size 1"x16 1"x20

ISO CE ACS EN

9200-10

Profile water manifold



Size	Size
2way	8way
3way	9way
4way	10way
5way	11way
6way	12way
7way	

Features

Working pressure 10 bar (145 psi)

Working temperature from 0°C to +120°C (from 32 °F to 248 °F)

Thread ISO228(equivalent to DIN 259 and BS2779)

Size 1"x16 1"x20

ISO CE ACS EN

9200-11

Profile copper tube water manifold



Size	Size
2way	8way
3way	9way
4way	10way
5way	11way
6way	12way
7way	

Features

Working pressure 10 bar (145 psi)

Working temperature from 0°C to +120°C (from 32 °F to 248 °F)

Thread ISO228(equivalent to DIN 259 and BS2779)

Size 1"x16 1"x20

ISO CE ACS EN

9200-12

Profile copper tube water manifold



Size	Size
2way	8way
3way	9way
4way	10way
5way	11way
6way	12way
7way	

Features

Working pressure 10 bar (145 psi)

Working temperature from 0°C to +120°C (from 32 °F to 248 °F)

Thread ISO228(equivalent to DIN 259 and BS2779)

Size 1"x16 1"x20

ISO CE ACS EN

b. HAVC-MANIFOLD



serie **9200**

9200-13 | Forging double valve water manifold



Size	Size
2way	8way
3way	9way
4way	10way
5way	11way
6way	12way
7way	

Features		
Working pressure 10 bar (145 psi)		
Working temperature from 0°C to +120°C (from 32 °F to 248 °F)		
Thread ISO228(equivalent to DIN 259 and BS2779)		
Size	1"x16	1"x20

9200-14 | Forging flowmeter manifolds



Size	Size
2way	8way
3way	9way
4way	10way
5way	11way
6way	12way
7way	

Features		
Working pressure 10 bar (145 psi)		
Working temperature from 0°C to +120°C (from 32 °F to 248 °F)		
Thread ISO228(equivalent to DIN 259 and BS2779)		
Size	1"x16	1"x20

9200-15 | Forging lockshield manifolds



Size	Size
2way	8way
3way	9way
4way	10way
5way	11way
6way	12way
7way	

Features		
Working pressure 10 bar (145 psi)		
Working temperature from 0°C to +120°C (from 32 °F to 248 °F)		
Thread ISO228(equivalent to DIN 259 and BS2779)		
Size	1"x16	1"x20

9200-16 | Forging manual manifold



Size	Size
2way	8way
3way	9way
4way	10way
5way	11way
6way	12way
7way	

Features		
Working pressure 10 bar (145 psi)		
Working temperature from 0°C to +120°C (from 32 °F to 248 °F)		
Thread ISO228(equivalent to DIN 259 and BS2779)		
Size	1"x16	1"x20

9200-17 | Stainless steel flowmeter manifolds



Size	Size
2way	8way
3way	9way
4way	10way
5way	11way
6way	12way
7way	

Features		
Working pressure 10 bar (145 psi)		
Working temperature from 0°C to +120°C (from 32 °F to 248 °F)		
Thread ISO228(equivalent to DIN 259 and BS2779)		
Size	1"x16	1"x20

9200-18 | Stainless steel lockshield manifolds



Size	Size
2way	8way
3way	9way
4way	10way
5way	11way
6way	12way
7way	

Features		
Working pressure 10 bar (145 psi)		
Working temperature from 0°C to +120°C (from 32 °F to 248 °F)		
Thread ISO228(equivalent to DIN 259 and BS2779)		
Size	1"x16	1"x20

b. HAVC-MANIFOLD



serie **9200**

9200-19 | Stainless steel manual manifold



Size	Size
2way	8way
3way	9way
4way	10way
5way	11way
6way	12way
7way	

Features

Working pressure 10 bar (145 psi)

Working temperature from 0°C to +120°C (from 32 °F to 248 °F)

Thread ISO228(equivalent to DIN 259 and BS2779)

Size 1"x16 1"x20

ISO CE ACS EBC

9200-20 | Stainless steel flowmeter manifolds



Size	Size
2way	8way
3way	9way
4way	10way
5way	11way
6way	12way
7way	

Features

Working pressure 10 bar (145 psi)

Working temperature from 0°C to +120°C (from 32 °F to 248 °F)

Thread ISO228(equivalent to DIN 259 and BS2779)

Size 1"x16 1"x20

ISO CE ACS EBC

9200-21 | Stainless steel lockshield manifolds



Size	Size
2way	9way
3way	10way
4way	11way
5way	12way
6way	16way
7way	18way
8way	20way

Features

Working pressure 10 bar (145 psi)

Working temperature from 0°C to +120°C (from 32 °F to 248 °F)

Thread ISO228(equivalent to DIN 259 and BS2779)

Size 1"x16 1"x20

ISO CE ACS EBC

9200-22 | Stainless steel flowmeter manifolds

60



Size	Size
2way	8way
3way	9way
4way	10way
5way	11way
6way	12way
7way	

Features

Working pressure 10 bar (145 psi)

Working temperature from 0°C to +120°C (from 32 °F to 248 °F)

Thread ISO228(equivalent to DIN 259 and BS2779)

Size 1"x16 1"x20

ISO CE ACS EBC

9200-23 | Flowmeter inner core



Size
1/2"

Features

Working pressure 10 bar (145 psi)

Working temperature from 0°C to +120°C (from 32 °F to 248 °F)

Thread ISO228(equivalent to DIN 259 and BS2779)

ISO CE ACS EBC

9200-24 | Bracket



Size
1"
1 1/4"

Features

Working pressure 10 bar (145 psi)

Working temperature from 0°C to +120°C (from 32 °F to 248 °F)

Thread ISO228(equivalent to DIN 259 and BS2779)

ISO CE ACS EBC

b. HAVC-MANIFOLD



serie **9200**

9200-25 | Thermostatic valve inner core



Size
1/2"x3/4"

Features	ISO	CE	ACS	EN
Working pressure 10 bar (145 psi)				
Working temperature from 0°C to +120°C (from 32 °F to 248 °F)				
Thread ISO228(equivalent to DIN 259 and BS2779)				

9200-26 | Manifold



Size
1/2"x3/4"

Features	ISO	CE	ACS	EN
Working pressure 10 bar (145 psi)				
Working temperature from 0°C to +120°C (from 32 °F to 248 °F)				
Thread ISO228(equivalent to DIN 259 and BS2779)				

9200-27 | Pipe connector



Size
16*1/2
16*3/4
18*1/2
18*3/4
20*3/4

Features	ISO	CE	ACS	EN
Working pressure 10 bar (145 psi)				
Working temperature from 0°C to +120°C (from 32 °F to 248 °F)				
Thread ISO228(equivalent to DIN 259 and BS2779)				

9200-28 | Manual valve inner core



Size
1/2"x3/4"

Features	ISO	CE	ACS	EN
Working pressure 10 bar (145 psi)				
Working temperature from 0°C to +120°C (from 32 °F to 248 °F)				
Thread ISO228(equivalent to DIN 259 and BS2779)				

9200-29 | Female tee



Size
1/2"x1"x3/8"

Features	ISO	CE	ACS	EN
Working pressure 16 bar (232 psi)				
Working temperature from -10°C to +120°C (from 14 °F to 248 °F)				
Thread ISO228(equivalent to DIN 259 and BS2779)				
Opening/closing test 10000 times				

9200-30 | Female/Male tee



Size
1/2"x1"x3/8"

Features	ISO	CE	ACS	EN
Working pressure 16 bar (232 psi)				
Working temperature from -10°C to +120°C (from 14 °F to 248 °F)				
Thread ISO228(equivalent to DIN 259 and BS2779)				
Opening/closing test 10000 times				

b. HAVC-MANIFOLD



serie **9200**

9200-31 | End unit



Size
3/4"
1"
1 1/4"

Features

ISO CE ACS EN

Working pressure 10 bar (145 psi)

Working temperature from 0°C to +120°C (from 32 °F to 248 °F)

Thread ISO228(equivalent to DIN 259 and BS2779)

9200-32 | Valve



Size
1/2"

Features

ISO CE ACS EN

Working pressure 10 bar (145 psi)

Working temperature from 0°C to +120°C (from 32 °F to 248 °F)

Thread ISO228(equivalent to DIN 259 and BS2779)

9200-33 | Safety valve



Size
1/2"1.5BAR 3BAR
1/2"9BAR 10BAR

Features

ISO CE ACS EN

Working pressure 10 bar (145 psi)

Working temperature from 0°C to +120°C (from 32 °F to 248 °F)

Thread ISO228(equivalent to DIN 259 and BS2779)

9200-34 | Safety valve



Size
1/2"1.5BAR 3BAR
1/2"9BAR 10BAR

Features

ISO CE ACS EN

Working pressure 16 bar (232 psi)

Working temperature from -10°C to +95°C (from 14 °F to 203 °F)

Thread ISO228 (equivalent to DIN 259 and BS2779)

Distance between centres 36mm and 1/2"x15

9200-35 | Safety valve



Size
1/2"
3/4"

Features

ISO CE ACS EN

Working pressure 10 bar (145 psi)

Working temperature from 0°C to +120°C (from 32 °F to 248 °F)

Thread ISO228(equivalent to DIN 259 and BS2779)

9200-36 | Safety valve



Size
1/2"
3/4"

Features

ISO CE ACS EN

Working pressure 10 bar (145 psi)

Working temperature from 0°C to +120°C (from 32 °F to 248 °F)

Thread ISO228(equivalent to DIN 259 and BS2779)

b. HAVC-MANIFOLD



serie **9200**

9200-37 | Safety valve



Size

1/2"

3/4"

Features

ISO CEE ACS EN

Working pressure 10 bar (145 psi)

Working temperature from 0°C to +120°C (from 32°F to 248°F)

Thread ISO228(equivalent to DIN 259 and BS2779)

9200-38 | Safety valve



Size

1"

Features

ISO CEE ACS EN

Working pressure 10 bar (145 psi)

Working temperature from 0°C to +120°C (from 32°F to 248°F)

Thread ISO228(equivalent to DIN 259 and BS2779)

9200-39 | Safety valve



Size

1/2"

3/4"

Features

ISO CEE ACS EN

Working pressure 10 bar (145 psi)

Working temperature from 0°C to +120°C (from 32°F to 248°F)

Thread ISO228(equivalent to DIN 259 and BS2779)

9200-40 | Safety valve



Size

3/4"x16

1"x16

1"x20

Features

ISO CEE ACS EN

Working pressure 16 bar (232 psi)

Working temperature from -10°C to +95°C (from 14°F to 203°F)

Thread ISO228 (equivalent to DIN 259 and BS2779)

Distance between centres 36mm and 1/2"x15

9200-41 | Safety valve



Size

1/2"

3/4"

Features

ISO CEE ACS EN

Working pressure 10 bar (145 psi)

Working temperature from 0°C to +120°C (from 32°F to 248°F)

Thread ISO228(equivalent to DIN 259 and BS2779)

9200-42 | Safety valve



Size

1/2"

3/4"

Features

ISO CEE ACS EN

Working pressure 10 bar (145 psi)

Working temperature from 0°C to +120°C (from 32°F to 248°F)

Thread ISO228(equivalent to DIN 259 and BS2779)

b. HAVC-MANIFOLD



serie **9200**

9200-43 | Safety valve



Size
1/2"
3/4"

Features ISO CE ACS ERI
Working pressure 10 bar (145 psi)
Working temperature from 0°C to +120°C (from 32 °F to 248 °F)
Thread ISO228(equivalent to DIN 259 and BS2779)

9200-44 | Safety valve



Size
1/2"
3/4"

Features ISO CE ACS ERI
Working pressure 10 bar (145 psi)
Working temperature from 0°C to +120°C (from 32 °F to 248 °F)
Thread ISO228(equivalent to DIN 259 and BS2779)

9200-45 | Valve



Size
3/4"
1"
1 1/4"
1 1/2"
2"

Features ISO CE ACS ERI
Working pressure 10 bar (145 psi)
Working temperature from 0°C to +120°C (from 32 °F to 248 °F)
Thread ISO228(equivalent to DIN 259 and BS2779)

9200-46 | Valve



Size
3/4"
1"
1 1/4"
1 1/2"
2"

Features ISO CE ACS ERI
Working pressure 16 bar (232 psi)
Working temperature from -10°C to +95°C (from 14 °F to 203 °F)
Thread ISO228 (equivalent to DIN 259 and BS2779)
 Distance between centres 36mm and 1/2"x15

9200-47 | Valve



Size
1"

Features ISO CE ACS ERI
Working pressure 10 bar (145 psi)
Working temperature from 0°C to +120°C (from 32 °F to 248 °F)
Thread ISO228(equivalent to DIN 259 and BS2779)

9200-48 | Valve



Size
1"

Features ISO CE ACS ERI
Working pressure 10 bar (145 psi)
Working temperature from 0°C to +120°C (from 32 °F to 248 °F)
Thread ISO228(equivalent to DIN 259 and BS2779)

b. HAVC-MANIFOLD



serie **9200**

9200-49 | Valve



Size
1"

Features	ISO	CE	ACS	EN
Working pressure 10 bar (145 psi)				
Working temperature from 0°C to +120°C (from 32 °F to 248 °F)				
Thread ISO228(equivalent to DIN 259 and BS2779)				

9200-50 | Valve



Size
1"

Features	ISO	CE	ACS	EN
Working pressure 10 bar (145 psi)				
Working temperature from 0°C to +120°C (from 32 °F to 248 °F)				
Thread ISO228(equivalent to DIN 259 and BS2779)				

9200-51 | Air vent



Size
1/2"

Features	ISO	CE	ACS	EN
Working pressure 10 bar (145 psi)				
Working temperature from 0°C to +120°C (from 32 °F to 248 °F)				
Thread ISO228(equivalent to DIN 259 and BS2779)				

9200-52 | Air vent



Size
3/8"
1/2"

Features	ISO	CE	ACS	EN
Working pressure 16 bar (232 psi)				
Working temperature from -10°C to +95°C (from 14 °F to 203 °F)				
Thread ISO228 (equivalent to DIN 259 and BS2779)				
Distance between centres 36mm and 1/2"x15				

9200-53 | Air vent



Size
3/8"
1/2"

Features	ISO	CE	ACS	EN
Working pressure 10 bar (145 psi)				
Working temperature from 0°C to +120°C (from 32 °F to 248 °F)				
Thread ISO228(equivalent to DIN 259 and BS2779)				

9200-54 | Air vent



Size
1/2"
3/4"

Features	ISO	CE	ACS	EN
Working pressure 10 bar (145 psi)				
Working temperature from 0°C to +120°C (from 32 °F to 248 °F)				
Thread ISO228(equivalent to DIN 259 and BS2779)				

b. HAVC-MANIFOLD



serie **9200**

9200-55 | Valve



Size
1/2"
3/4"

Features

Working pressure 10 bar (145 psi)

Working temperature from 0°C to +120°C (from 32 °F to 248 °F)

Thread ISO228(equivalent to DIN 259 and BS2779)

ISO CE ACS EBC

9200-56 | Valve



Size
1/2"
3/4"
3/8"

Features

Working pressure 10 bar (145 psi)

Working temperature from 0°C to +120°C (from 32 °F to 248 °F)

Thread ISO228(equivalent to DIN 259 and BS2779)

ISO CE ACS EBC

9200-57 | Valve



Size
1/2"
3/4"
1"

Features

Working pressure 10 bar (145 psi)

Working temperature from 0°C to +120°C (from 32 °F to 248 °F)

Thread ISO228(equivalent to DIN 259 and BS2779)

ISO CE ACS EBC

9200-58 | Valve



Size
1/2"
3/4"

Features

Working pressure 16 bar (232 psi)

Working temperature from -10°C to +95°C (from 14 °F to 203 °F)

Thread ISO228 (equivalent to DIN 259 and BS2779)

Distance between centres 36mm and 1/2"x15

ISO CE ACS EBC

9200-59 | Valve



Size
1/2"
3/4"

Features

Working pressure 10 bar (145 psi)

Working temperature from 0°C to +120°C (from 32 °F to 248 °F)

Thread ISO228(equivalent to DIN 259 and BS2779)

ISO CE ACS EBC

9200-60 | Valve



Size
1/2"
3/4"

Features

Working pressure 10 bar (145 psi)

Working temperature from 0°C to +120°C (from 32 °F to 248 °F)

Thread ISO228(equivalent to DIN 259 and BS2779)

ISO CE ACS EBC

b. HAVC-MANIFOLD



serie **9200**

9200-67 | Brass ball valve with meter



Size
25x1"
32x1"

Features

Working pressure 16 bar (232 psi)
Working temperature from -10°C to +120°C (from 14°F to 248°F)
Thread ISO228 (equivalent to DIN 259 and BS2779)
Opening/closing test 10000 times

ISO CE ACS EN

9200-68 | Brass ball valve



Size
25x1"
32x1"

Features

Working pressure 16 bar (232 psi)
Working temperature from -10°C to +120°C (from 14°F to 248°F)
Thread ISO228 (equivalent to DIN 259 and BS2779)
Opening/closing test 10000 times

ISO CE ACS EN

9200-69 | Brass ball valve with meter with ppr



Size
25x1"
32x1"

Features

Working pressure 10 bar (145 psi)
Working temperature from 0°C to +120°C (from 32°F to 248°F)
Thread ISO228 (equivalent to DIN 259 and BS2779)

ISO CE ACS EN

9200-70 | Brass ball valve with ppr



Size
25x1"
32x1"

Features

Working pressure 10 bar (145 psi)
Working temperature from 0°C to +120°C (from 32°F to 248°F)
Thread ISO228 (equivalent to DIN 259 and BS2779)

ISO CE ACS EN

9200-71 | Brass ball valve



Size
25x1"
32x1"

Features

Working pressure 10 bar (145 psi)
Working temperature from 0°C to +120°C (from 32°F to 248°F)
Thread ISO228 (equivalent to DIN 259 and BS2779)

ISO CE ACS EN

9200-72 | Brass ball valve with ppr



Size
25x1"
32x1"

Features

Working pressure 10 bar (145 psi)
Working temperature from 0°C to +120°C (from 32°F to 248°F)
Thread ISO228 (equivalent to DIN 259 and BS2779)

ISO CE ACS EN

b. HAVC-MANIFOLD



serie **9200**

9200-73 | Brass ball valve with filter with ppr



Size

1/2*1/2

3/4*3/4

Features

Working pressure 10 bar (145 psi)

Working temperature from 0°C to +120°C (from 32 °F to 248 °F)

Thread ISO228(equivalent to DIN 259 and BS2779)

ISO CE ACS EN

9200-74 | Brass ball valve with ppr



Size

1/2*1/2

3/4*3/4

Features

Working pressure 10 bar (145 psi)

Working temperature from 0°C to +120°C (from 32 °F to 248 °F)

Thread ISO228(equivalent to DIN 259 and BS2779)

ISO CE ACS EN

9200-75 | Straight type articulated



Size

16*1/2(Red Blue)

16*3/4(Yellow)

20*3/4(Red Blue)

Features

Working pressure 16 bar (232 psi)

Working temperature from -10°C to +120°C (from 14 °F to 248 °F)

Thread ISO228 (equivalent to DIN 259 and BS2779)

Opening/closing test 10000 times

ISO CE ACS EN

9200-76 | Articulated Angle type



Size

16*1/2(Red Blue)

16*3/4(Yellow)

20*3/4(Red Blue)

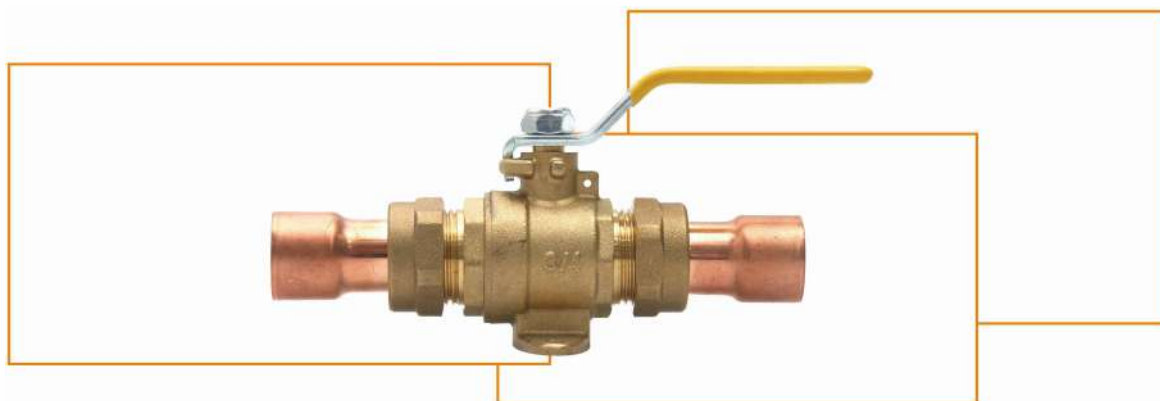
Features

Working pressure 10 bar (145 psi)

Working temperature from 0°C to +120°C (from 32 °F to 248 °F)

Thread ISO228(equivalent to DIN 259 and BS2779)

ISO CE ACS EN



Raccordi a stringere per tubo multistrato *Compression fittings for multilayer pipe*

GAS SYSTEMS



serie **9300**

9300-1

Gas ball valve, female/female long threads,
yellow lever handle



Features

CE ACS EN

Working pressure 5 bar (72.5 psi)

Working temperature from -10°C to +80°C (from 14 °F to 176 °F)

Thread ISO228 (equivalent to DIN 259 and BS2779)

Opening/closing test 10000 times

Size 1/4" 3/8" 1/2" 3/4" 1" 1-1/4" 1-1/2" 2" 2-1/2" 3" 4"

9300-2

Gas ball valve, female/female long threads,
Butterfly handle



Features

CE ACS EN

Working pressure 5 bar (72.5 psi)

Working temperature from -10°C to +80°C (from 14 °F to 176 °F)

Thread ISO228 (equivalent to DIN 259 and BS2779)

Opening/closing test 10000 times

Size 1/2" 3/4" 1"

9300-3

Gas ball valve, male/female long threads,
yellow lever handle



Features

CE ACS EN

Working pressure 5 bar (72.5 psi)

Working temperature from -10°C to +80°C (from 14 °F to 176 °F)

Thread ISO228 (equivalent to DIN 259 and BS2779)

Opening/closing test 10000 times

Size 1/4" 3/8" 1/2" 3/4" 1" 1-1/4" 1-1/2" 2"

9300-4

Gas ball valve, male/female long threads,
Butterfly handle



Features

CE ACS EN

Working pressure 5 bar (72.5 psi)

Working temperature from -10°C to +80°C (from 14 °F to 176 °F)

Thread ISO228 (equivalent to DIN 259 and BS2779)

Opening/closing test 10000 times

Size 1/2" 3/4" 1"

9300-5

Gas ball valve, male/male long threads,
yellow lever handle



Features

CE ACS EN

Working pressure 5 bar (72.5 psi)

Working temperature from -10°C to +80°C (from 14 °F to 176 °F)

Thread ISO228 (equivalent to DIN 259 and BS2779)

Opening/closing test 10000 times

Size 1/4" 3/8" 1/2" 3/4" 1" 1-1/4" 1-1/2" 2"

9300-6

Gas ball valve, male/male long threads,
Butterfly handle



Features

CE ACS EN

Working pressure 5 bar (72.5 psi)

Working temperature from -10°C to +80°C (from 14 °F to 176 °F)

Thread ISO228 (equivalent to DIN 259 and BS2779)

Opening/closing test 10000 times

Size 1/2" 3/4" 1"

GAS SYSTEMS



serie **9300**

9300-7

Gas ball valve,
yellow lever handle



Features	
Working pressure	5 bar (72.5 psi)
Working temperature	from -10°C to +80°C (from 14 °F to 176 °F)
Thread	ISO228 (equivalent to DIN 259 and BS2779)
Opening/closing test	10000 times
Size	Q21F-16T-15

9300-8

Two way gas valve,
male/double hose connector



Features	
Working pressure	5 bar (72.5 psi)
Working temperature	from -10°C to +80°C (from 14 °F to 176 °F)
Thread	ISO228 (equivalent to DIN 259 and BS2779)
Opening/closing test	10000 times
Size	Q21F-16T-15

9300-9

Gas ball valve, female/female,
lockable handle



Features	
Working pressure	5 bar (72.5 psi)
Working temperature	from -10°C to +80°C (from 14 °F to 176 °F)
Thread	ISO228 (equivalent to DIN 259 and BS2779)
Opening/closing test	10000 times
Size	1/2" 3/4" 1"

9300-10

Gas ball valve, male/revolving female nut,
Butterfly handle



Features	
Working pressure	5 bar (72.5 psi)
Working temperature	from -10°C to +80°C (from 14 °F to 176 °F)
Thread	ISO228 (equivalent to DIN 259 and BS2779)
Opening/closing test	10000 times
Size	1/2"x3/4" 3/4"x3/4"

9300-11

Gas ball valve, male/female,
aluminium handle



Features	
Working pressure	5 bar (72.5 psi)
Working temperature	from -10°C to +80°C (from 14 °F to 176 °F)
Thread	ISO228 (equivalent to DIN 259 and BS2779)
Opening/closing test	10000 times
Size	1/2" M1/2"x3/4" M3/4"xF1/2" M3/4"xF3/4"

9300-12

Gas ball valve, male/male,
aluminium handle



Features	
Working pressure	5 bar (72.5 psi)
Working temperature	from -10°C to +80°C (from 14 °F to 176 °F)
Thread	ISO228 (equivalent to DIN 259 and BS2779)
Opening/closing test	10000 times
Size	M1/2"xM1/2" M1/2"xM3/4" M3/4"xM1/2" M3/4"xM3/4"

GAS SYSTEMS



serie **9300**

9300-13 | Gas ball valve, female/male, aluminium handle



Features		CE ACS EN	
Working pressure	5 bar (72.5 psi)		
Working temperature	from -10°C to +80°C (from 14 °F to 176 °F)		
Thread	ISO228 (equivalent to DIN 259 and BS2779)		
Opening/closing test	10000 times		
Size	F1/2"xM1/2" F1/2"xM3/4" F3/4"xM1/2" F3/4"xM3/4"		

9300-14 | Gas ball valve, yellow lever handle



Features		CE ACS EN	
Working pressure	5 bar (72.5 psi)		
Working temperature	from -10°C to +80°C (from 14 °F to 176 °F)		
Thread	ISO228 (equivalent to DIN 259 and BS2779)		
Opening/closing test	10000 times		
Size	Q21F-16T-15		

9300-15 | Gas ball valve, male/female, lockable handle



Features		CE ACS EN	
Working pressure	5 bar (72.5 psi)		
Working temperature	from -10°C to +80°C (from 14 °F to 176 °F)		
Thread	ISO228 (equivalent to DIN 259 and BS2779)		
Opening/closing test	10000 times		
Size	1/2" 3/4" 1"		

9300-16 | Gas ball valve, female/revolving female nut, Butterfly handle



Features		CE ACS EN	
Working pressure	5 bar (72.5 psi)		
Working temperature	from -10°C to +80°C (from 14 °F to 176 °F)		
Thread	ISO228 (equivalent to DIN 259 and BS2779)		
Opening/closing test	10000 times		
Size	1/2"x3/4" 3/4"x3/4"		

9300-17 | Elevator Valve Set 1/2 IPS x Nut M26 x 1.5



Features		CE ACS EN	
Working pressure	25 bar (362.5 psi)		
Working temperature	from -10°C to +120°C (from 14 °F to 248 °F)		
Thread	ISO228 (equivalent to DIN 259 and BS2779)		
Opening/closing test	10000 times		
Size	1/2 IPS		

9300-18 | Valvula Elevator Set 1/2 CTS x 1/4 NPT Male



Features		CE ACS EN	
Working pressure	25 bar (362.5 psi)		
Working temperature	from -10°C to +120°C (from 14 °F to 248 °F)		
Thread	ISO228 (equivalent to DIN 259 and BS2779)		
Opening/closing test	10000 times		
Size	1/2 CTS		

GAS SYSTEMS



serie **9300**

9300-19

Gas ball valve, male/revolving female nut,
Butterfly handle



Features

CE ACS EN

Working pressure 5 bar (72.5 psi)

Working temperature from -10°C to +80°C (from 14 °F to 176 °F)

Thread ISO228 (equivalent to DIN 259 and BS2779)

Opening/closing test 10000 times

Size M1/2"xF1/2" M1/2"xF3/4" M3/4"xF1/2" M3/4"xF3/4"

9300-20

Gas ball valve, female/revolving female
nut, aluminium handle



Features

CE ACS EN

Working pressure 5 bar (72.5 psi)

Working temperature from -10°C to +80°C (from 14 °F to 176 °F)

Thread ISO228 (equivalent to DIN 259 and BS2779)

Opening/closing test 10000 times

Size F1/2"xF1/2" F1/2"xF3/4" F3/4"xF1/2" F3/4"xF3/4"

9300-21

Two way gas valve,
male/double hose connector



Features

CE ACS EN

Working pressure 5 bar (72.5 psi)

Working temperature from -10°C to +80°C (from 14 °F to 176 °F)

Thread ISO228 (equivalent to DIN 259 and BS2779)

Opening/closing test 10000 times

Size Q21F-16T-15

9300-22

Two way gas valve,
male/double hose connector



Features

CE ACS EN

Working pressure 5 bar (72.5 psi)

Working temperature from -10°C to +80°C (from 14 °F to 176 °F)

Thread ISO228 (equivalent to DIN 259 and BS2779)

Opening/closing test 10000 times

Size Q21F-16T-15

9300-23

Gas ball valve, female/male,
aluminium handle



Features

CE ACS EN

Working pressure 5 bar (72.5 psi)

Working temperature from -10°C to +80°C (from 14 °F to 176 °F)

Thread ISO228 (equivalent to DIN 259 and BS2779)

Opening/closing test 10000 times

Size F1/2"xM3/4" F3/4"xM1/2" F3/4"xM3/4"

9300-24

Gas ball valve, female/hose connector,
aluminium handle



Features

CE ACS EN

Working pressure 5 bar (72.5 psi)

Working temperature from -10°C to +80°C (from 14 °F to 176 °F)

Thread ISO228 (equivalent to DIN 259 and BS2779)

Opening/closing test 10000 times

Size 1/2"x9 1/2"x9.5 1/2"x10 1/2"x10.5 1/2"x11.8 1/2"x14 1/2"x15

GAS SYSTEMS



serie **9300**

9300-25

Two way gas valve,
male/double hose connector



Features

CE ACS EN

Working pressure 5 bar (72.5 psi)

Working temperature from -10°C to +80°C (from 14 °F to 176 °F)

Thread ISO228 (equivalent to DIN 259 and BS2779)

Opening/closing test 10000 times

Size Q91F-16T-1216

9300-26

Two way gas valve,
male/double hose connector



Features

CE ACS EN

Working pressure 5 bar (72.5 psi)

Working temperature from -10°C to +80°C (from 14 °F to 176 °F)

Thread ISO228 (equivalent to DIN 259 and BS2779)

Opening/closing test 10000 times

Size Q91F-16T-1216

9300-27

Gas ball valve,
yellow lever handle



Features

CE ACS EN

Working pressure 5 bar (72.5 psi)

Working temperature from -10°C to +80°C (from 14 °F to 176 °F)

Thread ISO228 (equivalent to DIN 259 and BS2779)

Opening/closing test 10000 times

Size Q91F-16T-1216

9300-28

Gas ball valve,
yellow lever handle



黄铜外丝直嘴球阀
Q218

Features

CE ACS EN

Working pressure 5 bar (72.5 psi)

Working temperature from -10°C to +80°C (from 14 °F to 176 °F)

Thread ISO228 (equivalent to DIN 259 and BS2779)

Opening/closing test 10000 times

Size 7/8"x22 7/8"x28

9300-29

Gas ball valve,
yellow lever handle



黄铜外丝直嘴球阀

Features

CE ACS EN

Working pressure 5 bar (72.5 psi)

Working temperature from -10°C to +80°C (from 14 °F to 176 °F)

Thread ISO228 (equivalent to DIN 259 and BS2779)

Opening/closing test 10000 times

Size 22x22

9300-30

Gas ball valve,
yellow lever handle



Features

CE ACS EN

Working pressure 5 bar (72.5 psi)

Working temperature from -10°C to +80°C (from 14 °F to 176 °F)

Thread ISO228 (equivalent to DIN 259 and BS2779)

Opening/closing test 10000 times

Size 7/8"x22 7/8"x28

GAS SYSTEMS



serie **9300**

9300-31 | Gas ball valve, yellow lever handle



Features

CE ACS ERI

Working pressure 5 bar (72.5 psi)

Working temperature from -10°C to +80°C (from 14 °F to 176 °F)

Thread ISO228 (equivalent to DIN 259 and BS2779)

Opening/closing test 10000 times

Size 22x22

9300-32 | Gas ball valve, T handle



Features

CE ACS ERI

Working pressure 5 bar (72.5 psi)

Working temperature from -10°C to +80°C (from 14 °F to 176 °F)

Thread ISO228 (equivalent to DIN 259 and BS2779)

Opening/closing test 10000 times

Size 16x18

9300-33 | Gas ball valve, yellow lever handle



Features

CE ACS ERI

Working pressure 5 bar (72.5 psi)

Working temperature from -10°C to +80°C (from 14 °F to 176 °F)

Thread ISO228 (equivalent to DIN 259 and BS2779)

Opening/closing test 10000 times

Size 22x22 28x28 40x40

9300-34 | Gas ball valve, T handle



Features

CE ACS ERI

Working pressure 5 bar (72.5 psi)

Working temperature from -10°C to +80°C (from 14 °F to 176 °F)

Thread ISO228 (equivalent to DIN 259 and BS2779)

Opening/closing test 10000 times

Size 16x16 18x18

9300-35 | Angle Valve Entry Polyethylene Pipe Maneral Anti-fraud



Features

CE ACS ERI

Working pressure 25 bar (362.5 psi)

Working temperature from -10°C to +120°C (from 14 °F to 248 °F)

Thread ISO228 (equivalent to DIN 259 and BS2779)

Opening/closing test 10000 times

9300-36 | Gas ball valve, female/hose connector, aluminium handle



Features

CE ACS ERI

Working pressure 5 bar (72.5 psi)

Working temperature from -10°C to +80°C (from 14 °F to 176 °F)

Thread ISO228 (equivalent to DIN 259 and BS2779)

Opening/closing test 10000 times

Size 16x16 16x1/2F 16x1/2M 20x20 20x3/4F 20x3/4M

GAS SYSTEMS



serie **9300**

9300-37 | PE/AL/PE valve x NPT Maneral Butterfly



Features		CE ACS EN
Working pressure	5 bar (72.5 psi)	
Working temperature	from -10°C to +80°C (from 14 °F to 176 °F)	
Thread	ISO228 (equivalent to DIN 259 and BS2779)	
Opening/closing test	10000 times	
Size	1216 X 1/2" NPT Hembra	

9300-38 | PE/AL/PE valve x NPT Maneral Lever Steel



Features		CE ACS EN
Working pressure	5 bar (72.5 psi)	
Working temperature	from -10°C to +80°C (from 14 °F to 176 °F)	
Thread	ISO228 (equivalent to DIN 259 and BS2779)	
Opening/closing test	10000 times	
Size	1418 x 1418	

9300-39 | Two way gas valve, male/double hose connector



Features		CE ACS EN
Working pressure	5 bar (72.5 psi)	
Working temperature	from -10°C to +80°C (from 14 °F to 176 °F)	
Thread	ISO228 (equivalent to DIN 259 and BS2779)	
Opening/closing test	10000 times	
Size	1/2"x10.5x10.5 1/2"x16x16	

9300-40 | Two way gas valve, male/double hose connector



Features		CE ACS EN
Working pressure	5 bar (72.5 psi)	
Working temperature	from -10°C to +80°C (from 14 °F to 176 °F)	
Thread	ISO228 (equivalent to DIN 259 and BS2779)	
Opening/closing test	10000 times	
Size	Q24F-16T-15	

9300-41 | Two way gas valve, male/double hose connector



Features		CE ACS EN
Working pressure	5 bar (72.5 psi)	
Working temperature	from -10°C to +80°C (from 14 °F to 176 °F)	
Thread	ISO228 (equivalent to DIN 259 and BS2779)	
Opening/closing test	10000 times	
Size	Q91F-16T-1216	

9300-42 | Two way gas valve, male/double hose connector



Features		CE ACS EN
Working pressure	5 bar (72.5 psi)	
Working temperature	from -10°C to +80°C (from 14 °F to 176 °F)	
Thread	ISO228 (equivalent to DIN 259 and BS2779)	
Opening/closing test	10000 times	
Size	Q91F-16T-1216	

GAS SYSTEMS



serie **9300**

9300-43

Two way gas valve ,
male/double hose connector



CE ACS EAC

Features

Working pressure 5 bar (72.5 psi)

Working temperature from -10°C to +80°C (from 14 °F to 176 °F)

Thread ISO228 (equivalent to DIN 259 and BS2779)

Opening/closing test 10000 times

Size Q24F-16T-15

9300-44

Two way gas valve,
male/double hose connector



CE ACS EAC

Features

Working pressure 5 bar (72.5 psi)

Working temperature from -10°C to +80°C (from 14 °F to 176 °F)

Thread ISO228 (equivalent to DIN 259 and BS2779)

Opening/closing test 10000 times

Size Q24F-16T-15

9300-45

Two way gas valve ,
female/double hose connector



CE ACS EAC

Features

Working pressure 5 bar (72.5 psi)

Working temperature from -10°C to +80°C (from 14 °F to 176 °F)

Thread ISO228 (equivalent to DIN 259 and BS2779)

Opening/closing test 10000 times

Size Q24F-16T-15

9300-46

Two way gas valve,
female/double hose connector



CE ACS EAC

Features

Working pressure 5 bar (72.5 psi)

Working temperature from -10°C to +80°C (from 14 °F to 176 °F)

Thread ISO228 (equivalent to DIN 259 and BS2779)

Opening/closing test 10000 times

Size Q24F-16T-15

9300-47

Two way gas valve,
male/double hose connector



CE ACS EAC

Features

Working pressure 5 bar (72.5 psi)

Working temperature from -10°C to +80°C (from 14 °F to 176 °F)

Thread ISO228 (equivalent to DIN 259 and BS2779)

Opening/closing test 10000 times

9300-48

Two way gas valve,
male/double hose connector



CE ACS EAC

Features

Working pressure 5 bar (72.5 psi)

Working temperature from -10°C to +80°C (from 14 °F to 176 °F)

Thread ISO228 (equivalent to DIN 259 and BS2779)

Opening/closing test 10000 times

Size Q14F-16T-15

GAS SYSTEMS



serie **9300**

9300-49

Gas ball valve,
yellow lever handle



Features

CE ACS EN

Working pressure 5 bar (72.5 psi)

Working temperature from -10°C to +80°C (from 14 °F to 176 °F)

Thread ISO228 (equivalent to DIN 259 and BS2779)

Opening/closing test 10000 times

Size Q21F-16T-15

9300-50

Two way gas valve,
male/double hose connector



Features

CE ACS EN

Working pressure 5 bar (72.5 psi)

Working temperature from -10°C to +80°C (from 14 °F to 176 °F)

Thread ISO228 (equivalent to DIN 259 and BS2779)

Opening/closing test 10000 times

Size Q21F-16T-15

9300-51

Two way gas valve,
male/double hose connector



Features

CE ACS EN

Working pressure 5 bar (72.5 psi)

Working temperature from -10°C to +80°C (from 14 °F to 176 °F)

Thread ISO228 (equivalent to DIN 259 and BS2779)

Opening/closing test 10000 times

Size Q21F-16T-15

9300-52

Two way gas valve,
male/double hose connector



Features

CE ACS EN

Working pressure 5 bar (72.5 psi)

Working temperature from -10°C to +80°C (from 14 °F to 176 °F)

Thread ISO228 (equivalent to DIN 259 and BS2779)

Opening/closing test 10000 times

Size Q21F-16T-15

GAS SYSTEMS



serie **9300**

9300-53

Gas ball valve,
yellow lever handle



Features

CE ACS ERI

Working pressure 5 bar (72.5 psi)

Working temperature from -10°C to +80°C (from 14 °F to 176 °F)

Thread ISO228 (equivalent to DIN 259 and BS2779)

Opening/closing test 10000 times

Size Q21F-16T-15

9300-54

Two way gas valve,
male/double hose connector



Features

CE ACS ERI

Working pressure 5 bar (72.5 psi)

Working temperature from -10°C to +80°C (from 14 °F to 176 °F)

Thread ISO228 (equivalent to DIN 259 and BS2779)

Opening/closing test 10000 times

Size Q21F-16T-15

9300-55

Two way gas valve,
male/double hose connector



Features

CE ACS ERI

Working pressure 5 bar (72.5 psi)

Working temperature from -10°C to +80°C (from 14 °F to 176 °F)

Thread ISO228 (equivalent to DIN 259 and BS2779)

Opening/closing test 10000 times

Size Q21F-16T-15

9300-56

Two way gas valve,
male/double hose connector



Features

CE ACS ERI

Working pressure 5 bar (72.5 psi)

Working temperature from -10°C to +80°C (from 14 °F to 176 °F)

Thread ISO228 (equivalent to DIN 259 and BS2779)

Opening/closing test 10000 times

Size Q21F-16T-15

9300-57

Two way gas valve,
male/double hose connector



Features

CE ACS ERI

Working pressure 5 bar (72.5 psi)

Working temperature from -10°C to +80°C (from 14 °F to 176 °F)

Thread ISO228 (equivalent to DIN 259 and BS2779)

Opening/closing test 10000 times

Size Q21F-16T-15

9300-58

Two way gas valve,
male/double hose connector



Features

CE ACS ERI

Working pressure 5 bar (72.5 psi)

Working temperature from -10°C to +80°C (from 14 °F to 176 °F)

Thread ISO228 (equivalent to DIN 259 and BS2779)

Opening/closing test 10000 times

Size Q21F-16T-15

GAS SYSTEMS



serie **9303**

9303-1 | Female Elevator



Size

1/2 IPS

3/4 IPS

1 CTS

1 IPS

2 IPS

Features

CE ACS EN

Working pressure 10 bar

Working temperature from -20°C to +95°C

Thread ISO228 (equivalent to DIN 259 and BS2779)

Opening/closing test 10000 times

9303-2 | Male Elevator



Size

1/2 IPSx1/2"NPT

Features

CE ACS EN

Working pressure 10 bar

Working temperature from -20°C to +95°C

Thread ISO228 (equivalent to DIN 259 and BS2779)

Opening/closing test 10000 times

9303-3 | Conical Nut



Size

1/2 Flare

Features

CE ACS EN

Working pressure 10 bar

Working temperature from -20°C to +95°C

Thread ISO228 (equivalent to DIN 259 and BS2779)

Opening/closing test 10000 times

9303-4 | Elbow



Size

1/8"

1/4"

3/8"

1/2"

3/4"

1"

Features

CE ACS EN

Working pressure 10 bar

Working temperature from -20°C to +95°C

Thread ISO228 (equivalent to DIN 259 and BS2779)

Opening/closing test 10000 times

9303-5 | Racor Union



Size

1/2 Flarex3/8"NPT

1/2 Flarex1/2"NPT

Features

CE ACS EN

Working pressure 10 bar

Working temperature from -20°C to +95°C

Thread ISO228 (equivalent to DIN 259 and BS2779)

Opening/closing test 10000 times

9303-6 | Racor Union Flare



Size

1/2 Flare

Features

CE ACS EN

Working pressure 10 bar

Working temperature from -20°C to +95°C

Thread ISO228 (equivalent to DIN 259 and BS2779)

Opening/closing test 10000 times

GAS SYSTEMS



serie **9303**

9303-7 | Conector M26 una Pieza

Size
(M26x1.5)x1/2 Flare



Features	CE ACS ENI
Working pressure 10 bar	
Working temperature from -20°C to +95°C	
Thread ISO228 (equivalent to DIN 259 and BS2779)	
Opening/closing test 10000 times	

9303-8 | M26 two-piece connector

Size
(M26x1.5)x1/2"NPT



Features	CE ACS ENI
Working pressure 10 bar	
Working temperature from -20°C to +95°C	
Thread ISO228 (equivalent to DIN 259 and BS2779)	
Opening/closing test 10000 times	

9303-9 | Brass connector 1 piece

Size

1/8"

1/4"

3/8"

1/2"

3/4"

1"



Features	CE ACS ENI
Working pressure 10 bar	
Working temperature from -20°C to +95°C	
Thread ISO228 (equivalent to DIN 259 and BS2779)	
Opening/closing test 10000 times	

9303-10 | Npt nipple with gasket



Features	CE ACS ENI
Working pressure 10 bar	
Working temperature from -20°C to +95°C	
Thread ISO228 (equivalent to DIN 259 and BS2779)	
Opening/closing test 10000 times	

GAS SYSTEMS



serie **9304**

9304-6 | TCB216-1/2" NPT x1/4" NPT (B48)



Size

1/8"

1/4"

3/8"

1/2"

3/4"

1"

Features

Working pressure 10 bar

Working temperature from -20°C to +95°C

Thread ISO228 (equivalent to DIN 259 and BS2779)

Opening/closing test 10000 times

CE ACS ERI

9304-7 | Racor Te



Size

1/2 Flare

Features

Working pressure 10 bar

Working temperature from -20°C to +95°C

Thread ISO228 (equivalent to DIN 259 and BS2779)

Opening/closing test 10000 times

CE ACS ERI

9304-8 | PE/AL/PE Pipe



Features

Working pressure 5 bar (72.5 psi)

Working temperature from -10°C to +80°C (from 14 °F to 176 °F)

Thread ISO228 (equivalent to DIN 259 and BS2779)

Opening/closing test 10000 times

CE ACS ERI

Size 16 18 20 25

9304-9 | PE/AL/PE Pipe



Features

Working pressure 5 bar (72.5 psi)

Working temperature from -10°C to +80°C (from 14 °F to 176 °F)

Thread ISO228 (equivalent to DIN 259 and BS2779)

Opening/closing test 10000 times

CE ACS ERI

Size 16 18 20 25

GAS SYSTEMS



serie **9301**

9301-1

Straight connector

Features

Working pressure 5 bar (72.5 psi)

Working temperature from -10°C to +80°C (from 14 °F to 176 °F)

Working medium gas



SIZE: F1/2"xF1/2"



ANTI-TORSION DESIGN

- 1 Gasket ring ,NBR material.
- 2 Universal tight nut, stainless steel material.
- 3 Uniform coating, complete protection.
- 4 304 stainless steel wire mesh.
- 5 High tensile strength stainless steel core.

ANTI-CORROSION POLY MER COATING

- Protects against exposure to harsh household chemicals.
- Approved for indoor/outdoor use, resists UV rays and salt.

GAS SYSTEMS



serie **9301**

9301-2

Ball valve, full flow, female/female,
flat lever handle

Features

Working pressure 5 bar (72.5 psi)

Working temperature from -10°C to +80°C (from 14 °F to 176 °F)

Working medium gas



ERT

SIZE: F1/2" x F1/2"

9301-3

Ball valve, full flow, female/female,
flat lever handle

Features

Working pressure 5 bar (72.5 psi)

Working temperature from -10°C to +80°C (from 14 °F to 176 °F)

Working medium gas



ERT

SIZE: F1/2" x M1/2"

9301-4

Ball valve, full flow, female/female,
flat lever handle

Features

Working pressure 5 bar (72.5 psi)

Working temperature from -10°C to +80°C (from 14 °F to 176 °F)

Working medium gas



ERT

SIZE: F1/2" x F1/2" F3/4" x F3/4"

GAS SYSTEMS



serie **9301**

9301-5

Ball valve, full flow, female/female,
flat lever handle

Features

Working pressure 5 bar (72.5 psi)

Working temperature from -10°C to +80°C (from 14 °F to 176 °F)

Working medium gas



ERC

SIZE: F1/2"xF1/2"

9301-6

Ball valve, full flow, female/female,
flat lever handle

Features

Working pressure 5 bar (72.5 psi)

Working temperature from -10°C to +80°C (from 14 °F to 176 °F)

Working medium gas



ERC

SIZE: F1/2"xF1/2"

9301-7

Ball valve, full flow, female/female,
flat lever handle

Working pressure 5 bar (72.5 psi)

Working temperature from -10°C to +80°C (from 14 °F to 176 °F)

Working medium gas



ERC

SIZE: F1/2"xF1/2"

9301-8

Ball valve, full flow, female/female,
flat lever handle

Working pressure 5 bar (72.5 psi)

Working temperature from -10°C to +80°C (from 14 °F to 176 °F)

Working medium gas



ERC

SIZE: F1/2"xF1/2"

GAS SYSTEMS



serie **9301**

9301-9

Ball valve, full flow, female/female,
flat lever handle

Features

Working pressure 5 bar (72.5 psi)

Working temperature from -10°C to +80°C (from 14 °F to 176 °F)

Working medium gas



ERT

SIZE: F1/2" x F1/2"

9301-10

Ball valve, full flow, female/female,
flat lever handle

Features

Working pressure 5 bar (72.5 psi)

Working temperature from -10°C to +80°C (from 14 °F to 176 °F)

Working medium gas



ERT

SIZE: F1/2" x M1/2"

9301-11

Ball valve, full flow, female/female,
flat lever handle

Features

Working pressure 5 bar (72.5 psi)

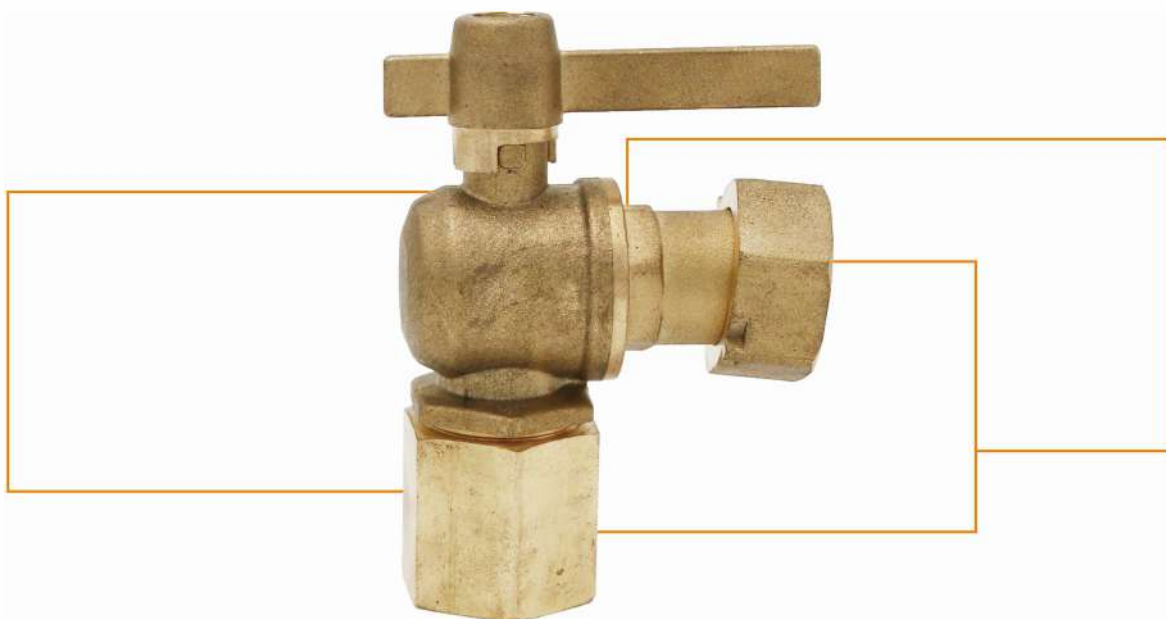
Working temperature from -10°C to +80°C (from 14 °F to 176 °F)

Working medium gas



ERT

SIZE: F1/2" x F1/2" F3/4" x F3/4"



water-flowmeter valve



WATER-FLOWMETER VALVE



serie **9400**

9400-1

EQUERRE VALVE



SIZE

1/2x3/4"
3/4x3/4"
3/4x1"
1x1"
1-1/4x1-1/4"
1-1/2x1-1/2"
1-1/4x1-1/4"
2x2"

CE ACS EN

Features

Working pressure 25 bar (362.5 psi)
Working temperature from -10°C to +120°C (from 14 °F to 248 °F)
Thread ISO228 (equivalent to DIN 259 and BS2779)
Opening/closing test 10000 times

9400-2

DROIT VALVE



SIZE

1/2x3/4"
3/4x3/4"
3/4x1"
1x1"
1-1/4x1-1/4"
1-1/2x1-1/2"
1-1/4x1-1/4"
2x2"

CE ACS EN

Features

Working pressure 25 bar (362.5 psi)
Working temperature from -10°C to +120°C (from 14 °F to 248 °F)
Thread ISO228 (equivalent to DIN 259 and BS2779)
Opening/closing test 10000 times

..

9400-3

EQUERRE VALVE



SIZE

20x3/4"
25x3/4"
25x1"
32x1"
32x1-1/4"
40x1-1/2"
50x2"

CE ACS EN

Features

Working pressure 25 bar (362.5 psi)
Working temperature from -10°C to +120°C (from 14 °F to 248 °F)
Thread ISO228 (equivalent to DIN 259 and BS2779)
Opening/closing test 10000 times

1/4" 3/8" 1/2" 3/8" 1" 1 1/4" 1 1/2" 2" 2 1/2" 3" 4"

9400-4

DROIT VALVE



SIZE

20x3/4"
25x3/4"
25x1"
32x1"
32x1-1/4"
40x1-1/2"
50x2"

CE ACS EN

Features

Working pressure 25 bar (362.5 psi)
Working temperature from -10°C to +120°C (from 14 °F to 248 °F)
Thread ISO228 (equivalent to DIN 259 and BS2779)
Opening/closing test 10000 times

9400-5

EQUERRE -PEXE.P VALVE



SIZE

25x3/4"
25x1"
32x1"
40x1-1/2"
50x2"

CE ACS EN

Features

Working pressure 10 bar
Working temperature from -20°C to +95°C
Thread ISO228 (equivalent to DIN 259 and BS2779)
Opening/closing test 10000 times

9400-6

DROIT -PEXE.P VALVE



SIZE

20x3/4"
25x3/4"
32x3/4"
25x1"
32x1"

CE ACS EN

Features

Working pressure 10 bar
Working temperature from -20°C to +95°C
Thread ISO228 (equivalent to DIN 259 and BS2779)
Opening/closing test 10000 times

WATER-FLOWMETER VALVE



serie **9400**

9400-7 | DROIT - MALEX E.P



SIZE

1/2x3/4"
3/4x3/4"
1x3/4"
3/4x1"
1x1"

Features

Working pressure 10 bar

Working temperature from -20°C to +95°C

Thread ISO228 (equivalent to DIN 259 and BS2779)

Opening/closing test 10000 times

CE ACS C III

Caractéristiques techniques

- Corps en laiton
- Sphère laiton revêtu nickel
- Pression d'épreuve: 24 Bars
- A.C.S N°17 ACC NY 123
- Test d'étanchéité suivant la norme NF EN 13628
- Test d'arrachement suivant la norme NF EN ISO 3503 et ISO 17888-2015

DESCRIPTION DU PRODUIT

Le robinet fondamental normalement (1/4 de tour) ouvre l'écoulement du fluide vers le compteur à l'arrêt.

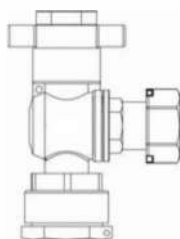
POSITION « ON »

Le robinet est normalement en position « ON » (ouvert) et permet l'écoulement du fluide vers le compteur à l'arrêt.

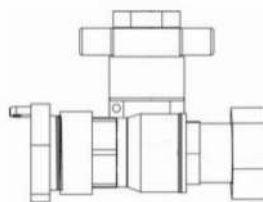
POSITION « OFF »

Le robinet est normalement en position « OFF » (fermé) et permet l'arrêt du fluide vers le compteur à l'arrêt.

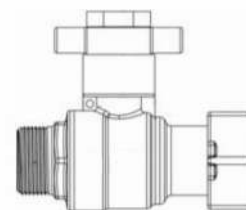
FONCTIONNEMENT DU ROBINET



Équerre
PEHD x Écrou prisonnier



Droit
PEHD x Écrou prisonnier



Droit
Mâle x Écrou prisonnier

Réf	DN	PEHD	Écrou prisonnier
RIEN151	15	25	3/4"
RIEN201	20	25	1"
RIEN202	20	32	1"
RIEN301	30	40	1 1/2"
RIEN401	40	50	2"

Réf	DN	PEHD	Écrou prisonnier
RIDN151	15	25	3/4"
RIDN201	20	25	1"
RIDN202	20	32	1"
RIDN301	30	40	1 1/2"
RIDN401	40	50	2"

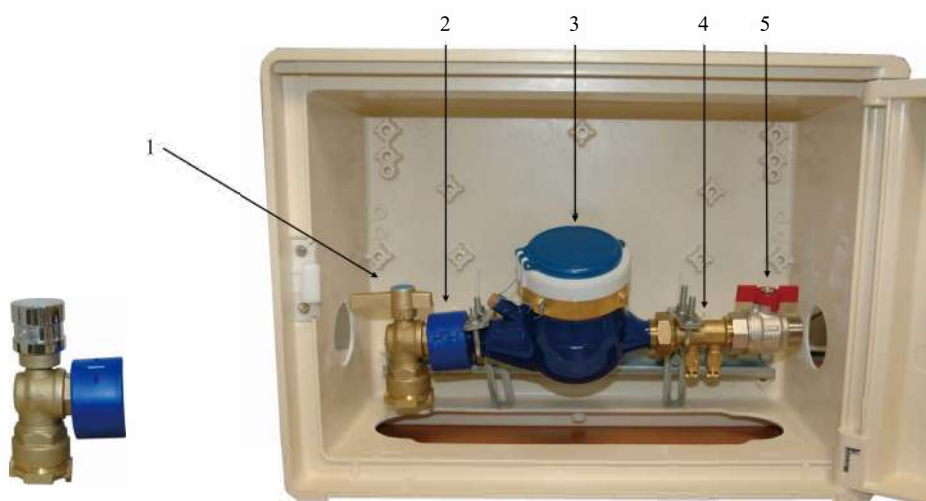
Réf	DN	Entrée (Mâle)	Écrou prisonnier
RIMN151	15	1/2"	3/4"
RIMN152	15	3/4"	3/4"
RIMN153	15	1"	3/4"
RIMN201	20	3/4"	1"
RIMN202	20	1"	1"



CARACTERISTIQUES DIMENSIONNELLES

- Largeur : 430 mm
- Hauteur : 317 mm
- Profondeur : 131 mm
- Poids : 4.6 kg / p
- Référence ADG :
 - CC 0258275 avec 8 trous et bouchons D 50 mm
 - CC 0258278 avec 4 trous et bouchons D 50 mm
- Conditionnement : 80 pièces sur palette de L 1200 x l 1000 x h 2185

EXEMPLE DE MONTAGE TYPE



1. Robinet sphérique d'équerre inviolable pour verrouillage de la poignée de manœuvre DN 25mm x 3/4mm (installée en position ouverte verrouillée).
2. Bague de plombage en matière thermoplastique.
3. Compteur DN 15 mm.
4. Clapet antipollution muni de deux purges.
5. Robinet d'arrêt « client ».

Les informations contenues dans cette fiche produit sont données à titre indicatif et sous réserve de modifications éventuelles sans préavis.

RECOMMANDATIONS : Les avis et conseils, les indications techniques, les offres que nous pouvons être amenés à donner ou à faire n'impliquent de notre part aucune garantie. Il n'est pas de notre ressort d'apprécier les cahiers des charges ou descriptifs fournis. Il appartient au client de vérifier l'adéquation entre le choix du matériel et les conditions réelles d'utilisation. Lors de vos achats, vérifiez que la présente fiche produit est bien la plus récente.

COFFRET DE BRANCHEMENT ET DE COMPTAGE

FICHE PRODUIT

Réf : MININTER
CCM

DESCRIPTION

- Abri de façade en matière composite pour compteur DN 15 mm
- Le coffret MIMINTER se compose :
 - d'une cuve équipée de bossages pour la fixation des équipements réalisés par l'intermédiaire d'équerres réglables (coulissantes par un rail).
 - d'une porte pivotante autorisant une ouverture à 180°
 - peut recevoir les accessoires permettant d'assurer les fonctions de coupure, purge, anti-pollution et comptage.

Options :

- socle
- possibilités d'isolation thermique selon les risques de gel envisagés.
- Possibilités de logo pour porte.



MIMINTER



APPLICATION

- Le coffret est conçu pour le raccordement d'un abonné au réseau d'alimentation en eau potable

SPECIFICATIONS MATIERES

Description	Matière	Norme
Cuve et porte	Thermodur (SMC Beige A 3225)	5123886
Serrure	Rectangulaire thermoplastique	
Rail	Acier zingué blanc	

CONFORMITE AUX NORMES ET AGREMENTS

- Certification EN ISO 9001 : 2000
- Tenue aux chocs IK10 selon la norme NF EN 62262
- Degré de protection IP 43 selon la norme NF EN 60523
- Tenue au feu 960°C au fil incandescent selon la norme NF EN 60695-2-11

SPECIFICATIONS TECHNIQUES

- Le SMC est un matériau composite de haute technicité composé de résine polyester armée de fibre de verre. Il offre une bonne tenue mécanique ainsi qu'une résistance de très longue durée aux agents extérieurs (intempéries, UV, extrêmes climatiques)
- Pression maximale de service : 10 Bar

Les informations contenues dans cette fiche produit sont données à titre indicatif et sous réserve de modifications éventuelles sans préavis.